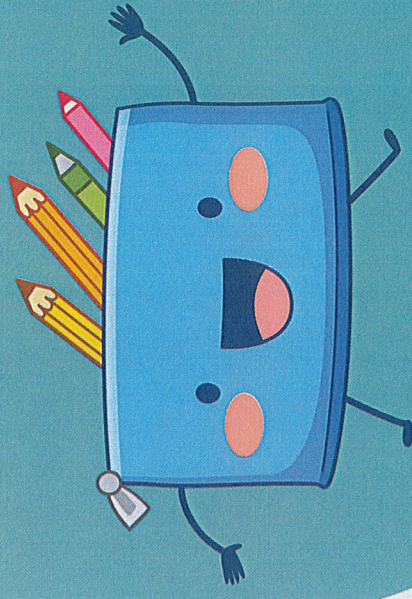
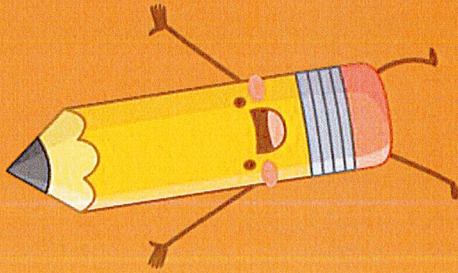


“Inclusive education seeks to provide meaningful education to the range of students in our communities by drawing strength from their diversity.”

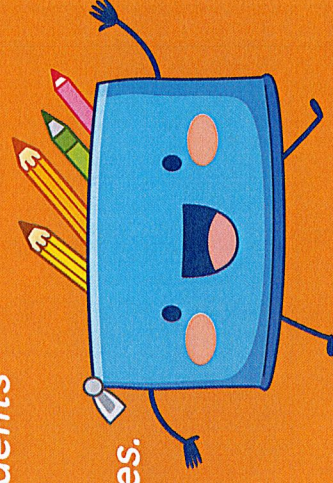




What is a Peer Role Model?

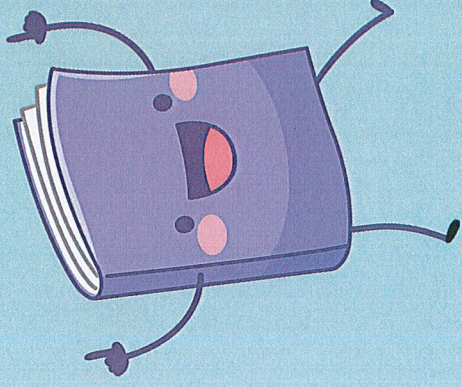
The Fairhaven Public School District is committed to providing an inclusive learning environment for all students.

A peer role model is a child without a disability who displays typical development and behavior in a school setting. Peers learn alongside special needs students engaging in social, play, academic, and other developmentally appropriate preschool activities.



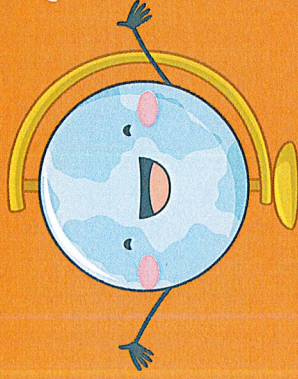
What the FPS Preschool Program Offers:

- Practice problem-solving skills in social situations
- Be able to state personal information: first and last name, age, school name, city, state, country
- Share classroom materials with the group
- Use a variety of art materials: crayons, tempera paint, watercolor paint, colored pencils, markers, oil pastels, art chalk, clay
- Observe weather and plant life during each season
- Exposure to alphabet: letter names and sounds
- Recognize, spell, write first name
- Hold a pencil, marker, crayon correctly
- Retell familiar stories
- Matching: objects, symbols, shapes, patterns, etc.
- Same and Different
- Sorting by various attributes: color, shape, size
- Smooth transition into kindergarten



Fostering Family: Home to School Connections

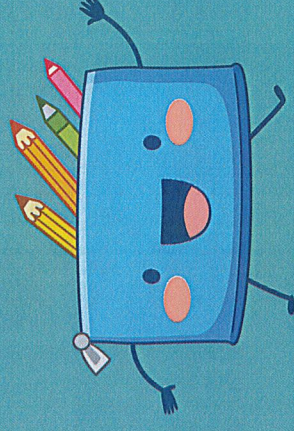
- Building relationships with children is the first step to creating an engaging learning environment.
- Preschool students participate in whole school events such as Winter and Spring Concerts, holiday celebrations, and afterschool PTO events such as truck or treat.
- Starting in preschool families are able to become of the school community by joining PTO events, attending conferences and open houses.
- Preschool has yearly welcome back events and end of the year celebrations in order to foster a community with the parents.



English Language Arts

In Preschool, students will learn their letters and sounds. We use the *Handwriting Without Tears* curriculum, which uses a multi-sensory researched based curriculum. It provides a structured approach to handwriting instruction.

We emphasize on making connections between letter formation and sound letter relationships. Preschoolers also develop their oral vocabulary and schema through dramatic play centers. Every two weeks a new center is introduced. It begins with exposing the students to key vocabulary words. Vocabulary is emphasized during dramatic play to increase their oral language.

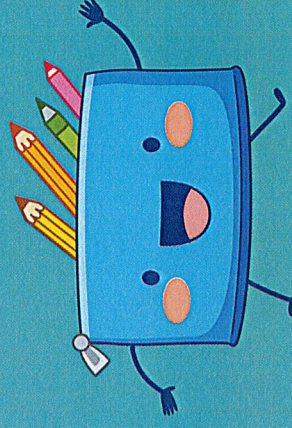
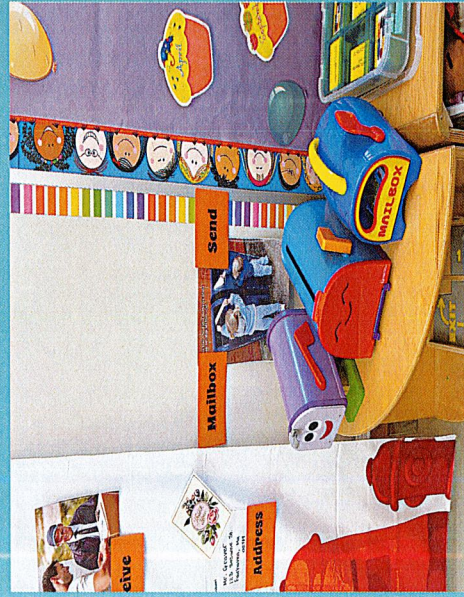




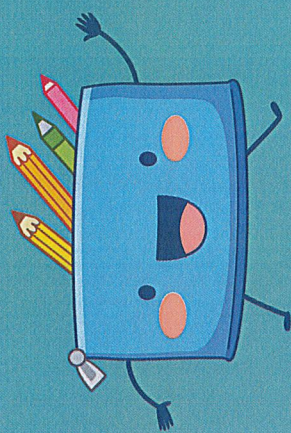
ELA



POST OFFICE VOCABULARY



English Language Arts

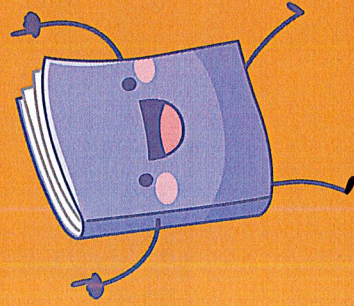


Math

NUMBERS, NUMBERS, EVERYWHERE

Everywhere you look in preschool, it involves numbers and counting. We naturally incorporate counting, numeral identification, and one to one correspondence throughout the day. During

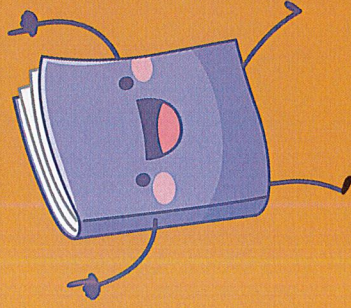
Calendar, students learn to identify the months, days, and the year. They work on extending patterns and graph the weather. In the AM preschool, students work on classifying objects by colors, shapes, and sizes. In the PM class, students are working on numeral ID up to 20 and completing ten frames to foster the beginning of early numeracy.



Math

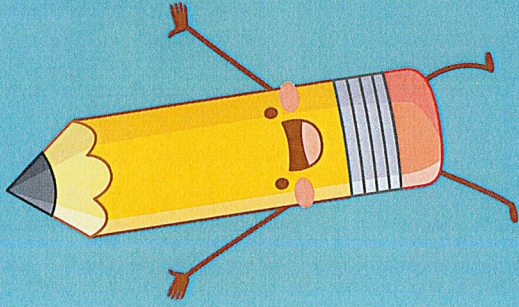
NUMBERS, NUMBERS, EVERYWHERE

Learning to recognize numbers and counting while developing life skills.

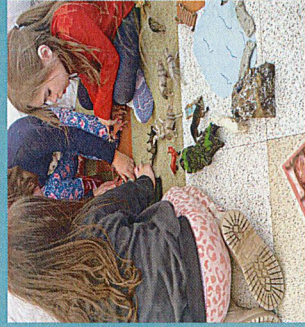


Science

Science in preschool is ALL ABOUT hands-on exploration through guided discover, natural play, and experiments. We work on Life Cycles, our Five Senses, Healthy Bodies, and lots more!!!! in both math and science, our curriculum focuses on STEM learning (science, technology, engineering, and math). This is a critical early development skill that will promote creativity and problem solving tools. The focus of a STEM education is hands-on, problem-based learning.

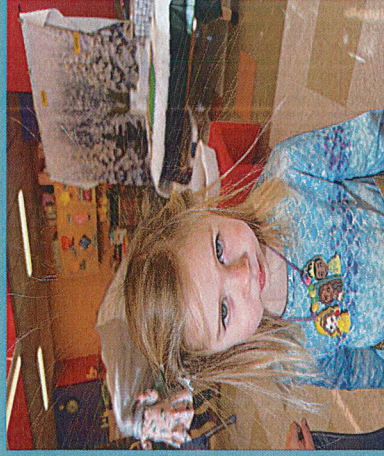


Science



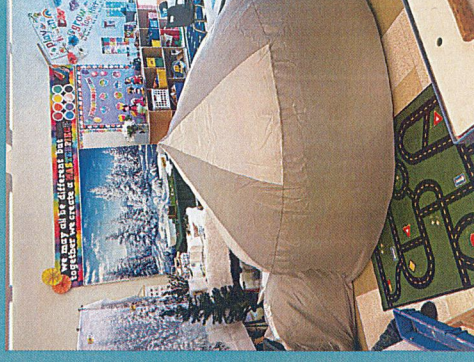
Habitats

IT'S ELECTRIC



How to Catch a Gingerbread Man

EXPERIMENTS

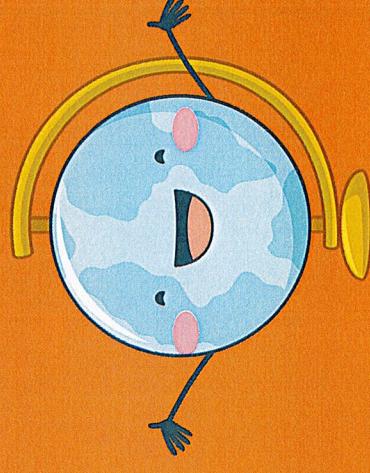


Winter VOCABULARY



Social Studies

In preschool, there is a large focus on drastic play. Bi-monthly, we focus on a theme that incorporates the children's understanding and building upon prior knowledge to learn about different celebration, jobs, and cultures.



Social Studies



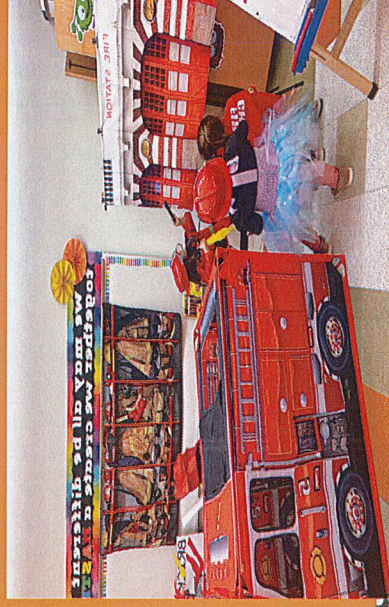
Birthday Vocabulary

Orchard Vocabulary



Concert Vocabulary

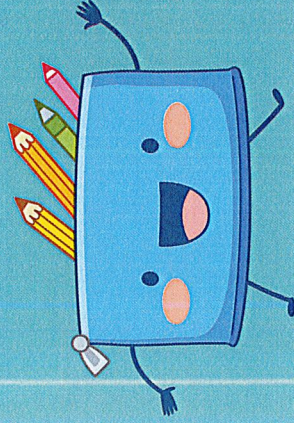
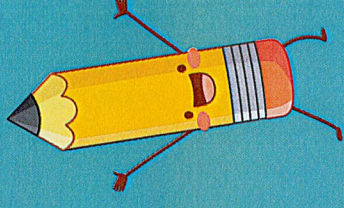
Fire Station Vocabulary



Fine Motor Skills

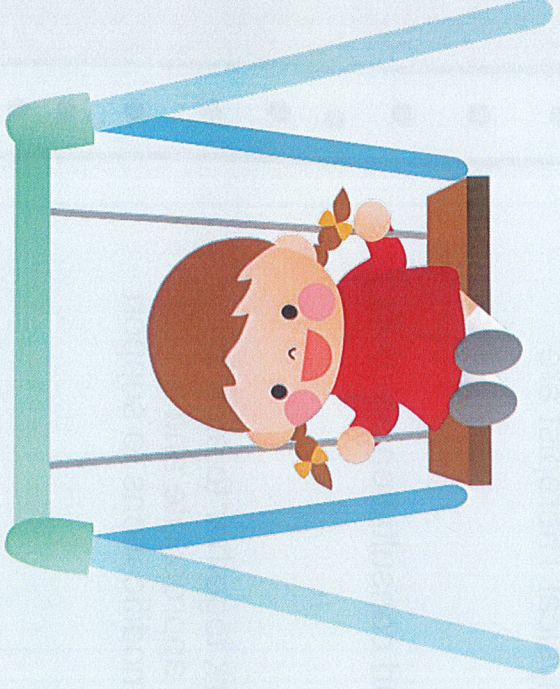
Students are exposed to the Handwriting Without Tears Curriculum

- Focus on pre-writing skills:
 - Before letter formation, the program emphasizes activities that build foundational skills like directional awareness, line tracing, and hand-eye coordination.
 - Developmentally appropriate:
- Multi-sensory approach:
- Incorporates visual, auditory, and kinesthetic learning through songs, movement activities, and tactile manipulatives like Play-Doh or wooden pieces.
 - Large letter size: Initially focuses on large, easy-to-see uppercase letters for better visual perception and easier letter formation.



Gross Motor Skills

- Students are giving multiple opportunities for gross motor activities throughout the day
- Daily outside time on our playgrounds are offered weather permitting
- Movement breaks are built in throughout the day



Groups and Consultation

- Occupational, Speech and Language and Physical Therapist are integrated in the program.
- Opportunities for whole classroom groups and consultation are built into the program
- Therapists, Teacher and Classroom Staff work together to aide in making classroom activities developmentally appropriate and providing appropriate accommodations and modifications to support all students all the time.

School Hours

East Fairhaven Integrated Preschool Program:

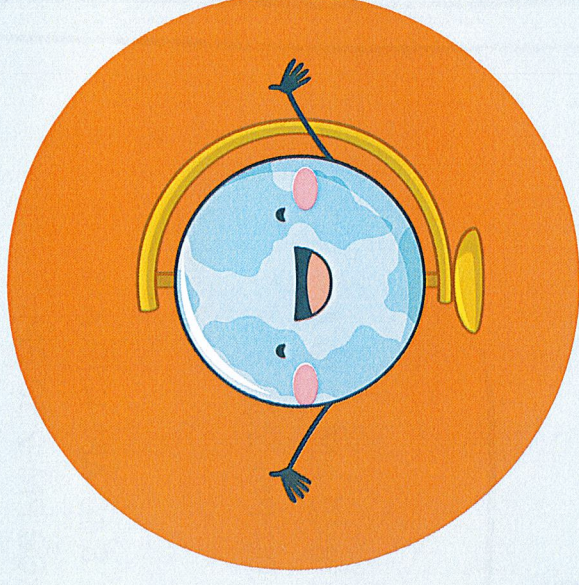
Morning Session (3 year olds) Monday - Thursday 8:40 AM-11:10 AM
Afternoon Session (4 year olds) Monday - Friday 12:00 PM-2:30 PM

Wood School Integrated Preschool Program:

Morning Session (3 year olds) Monday - Thursday 8:40 AM-11:10 AM
Afternoon Session (4 year olds) Monday - Friday 12:00 PM-2:30 PM

Admission Procedure

- Admission for a child as a peer role model may occur through a lottery depending on the number of eligible applicants that are received.
- Peer role models must be residing within the Fairhaven school district.
- Applicants must be 2.9 to 3 years old prior to September 1, 2025.
- Children considered are those who do not currently receive special education services and are not in need of special education services.
 - Applicants (model students) are expected to demonstrate AGE APPROPRIATE SKILLS (within 6 months) in the areas of speech and language, cognitive/school readiness skills, fine and gross motor skills, and socialization and behavioral skills - this includes but is not limited to being toilet trained, demonstrating self-control and pro-social behavior.
 - If, through the application and screening process, it is determined that a child is not developmentally on target in any of these areas, it may make the student ineligible.
 - If the child is unable to comply with directives or participate in the screening, the parents or teachers may choose to re-screen the child in 6 months.



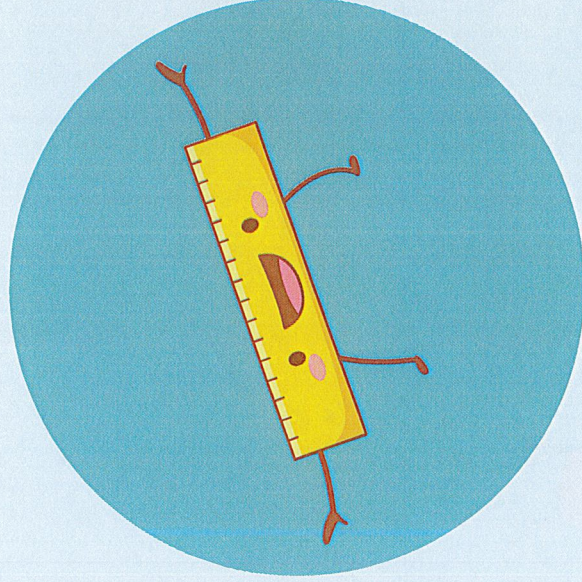
Tuition

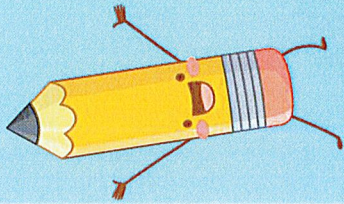
There is a monthly tuition fee charged for peer partner participants in our preschool program.

Fairhaven Public School's offer a low cost tuition. The current 2025-2026 tuition fee is \$225.00 a month. Tuition is due on the 1st of each month.

A one month tuition deposit will be required by June 1, 2025 to secure your child's placement in the preschool program.

The remainder of the annual tuition will be collected in monthly installments beginning September 1, 2025.



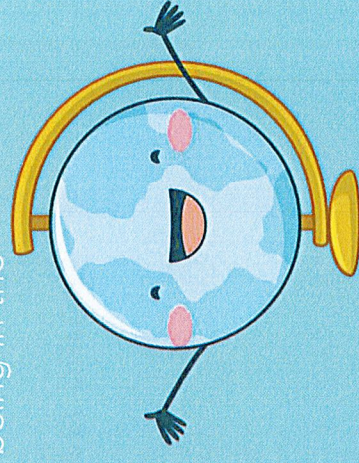


Required Documents

- All children who are accepted must have a physical examination prior to the start of school.
- A completed Health Record must be returned before school starts in September. Children must be properly immunized.
- Upon acceptance to the program, immunization records must be submitted prior to the start of school. children who do not meet the medical requirements will not be allowed to participate in the program.
- A consent form providing emergency telephone, contact information, and authorization for emergency treatment is also required.

The following requirements must also be submitted after notification of being in the program but before beginning the program:

- Registration Packet (received from child's school office)
- A copy of your child's Birth Certificate
- All proof of residency requirements (all 3 items)
- Current Immunization Records
- Signed Tuition Agreement
- Tuition Deposit by June 1, 2025

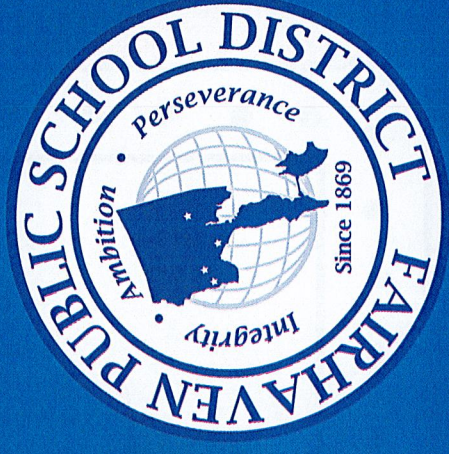


Common Questions ?

- Will Snack / lunch be provided to my child? You will have to provide a daily snack for your child.
- Is there transportation available for my child? Families pick up and drop off their child daily.
- Can I choose which school my child attends? Your address determines the school that your child attend. However, Fairhaven Public Schools may assign the school.
- Does my child need to be toilet trained? Yes, your child needs to be toilet trained.

FAIRHAVEN PUBLIC SCHOOLS

FY26 Budget Presentation



FY26 Budget Overview

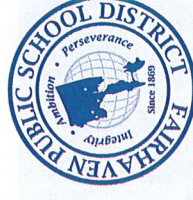
FY26 Required Net School Spending: \$25,777,688

Increase from FY25 Required NSS: \$1,090,675

FY26 DRAFT School Department Budget Request: \$25,771,598

FY26 Town Placeholder: \$25,256,166

\$521,522 below FY26 Required Net School Spending



FY25 Budgetary Figures

FY25 Town Allocation: \$24,702,183

FY25 Special Fall Town Meeting SOA: \$118,030

FY25 Adjusted Allocation: \$24,820,213

FY26 Town's Current Draft Allocation: \$25,256,166

Increase of \$435,953



FY26 Town Allocation

\$25,256,166

(\$521,522) below Net School Spending

FY26 Request \$25,771,598

Increase of: \$435,953 (from FY25)

TOWN DEPARTMENTS were asked to **cut 2%** from FY25



Predicting a Reduction in Federal Funding

Title I Part A:

Grant supports:

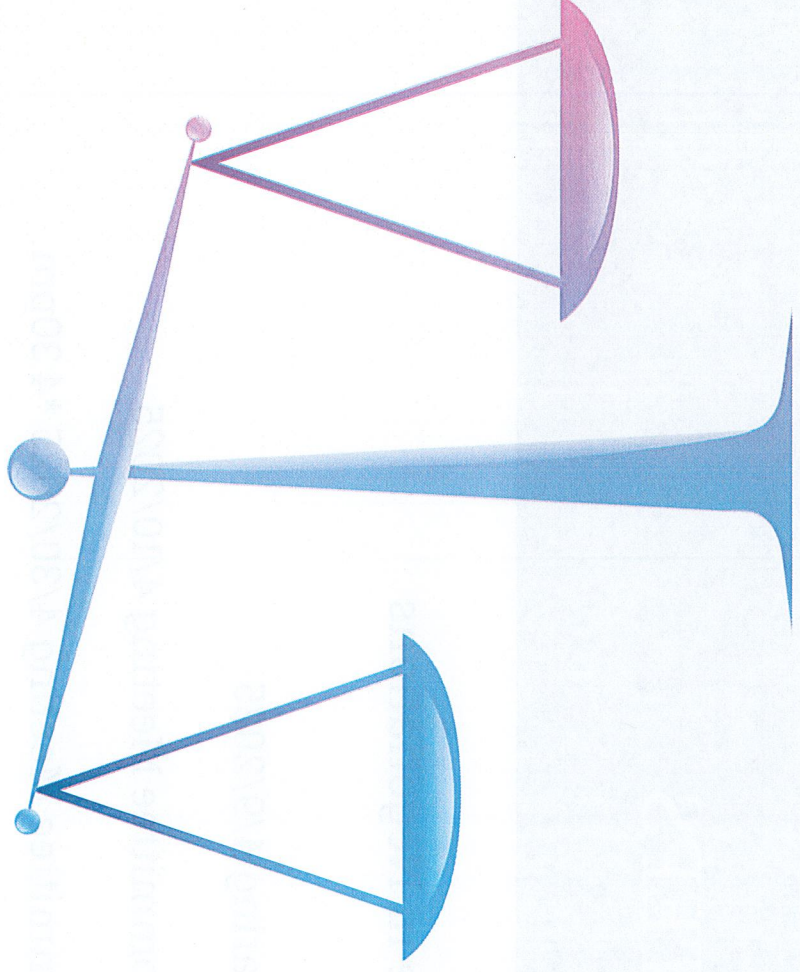
- Assistant Principal for Teaching and Learning (1)
- WIN Paraprofessionals/District Interventionist (5)
- WIN Consultant and program

SPED IDEA

Grant supports:

- Special Education Teachers (4)
- School Psychologist (1)
- Special Education Clerk (1)
- Early Childhood Para (1)

Balancing act- with TOWN and within FPS



NEXT STEPS

Four Units are in Negotiations

- Budget Hearing 4/9/2025
- Finance Committee Meeting 4/10/2025
- School Committee Meeting 4/30/2025 *4:30pm
- Precinct Meetings/Town Meeting Preview 4/30/2025
- Town Meeting 5/03/2025



How to deal with financial shortfalls:

Some staff cuts will likely take place

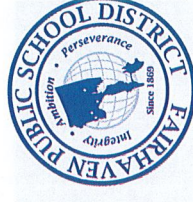
Reduce Operating Expenditures

Consolidate Bus Routes (cut one route)

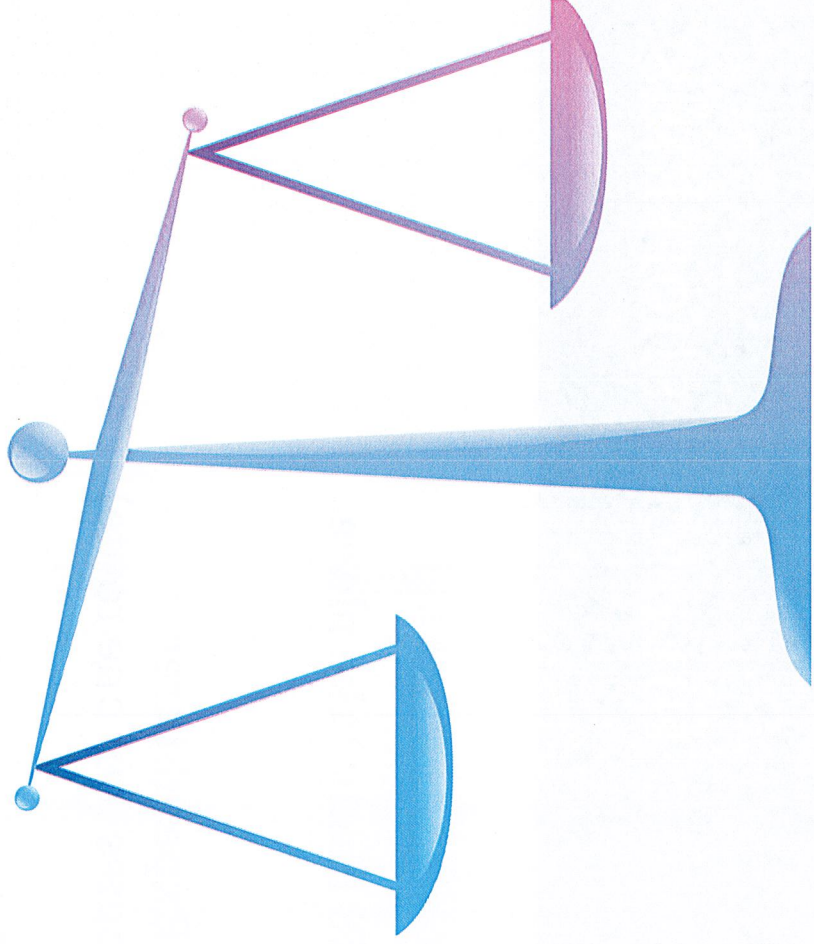
PD

Supplies/Materials

Middle School Athletics



Now what?



Fairhaven Public Schools DRAFT Wellness Policy

Policy ADF

The Fairhaven School Committee recognizes the relationship between student well-being and student achievement as well as the importance of a comprehensive district wellness program. Therefore, the school district will provide developmentally appropriate and sequential nutrition and physical education as well as opportunities for physical activity. The wellness program will be implemented in a multidisciplinary fashion and will be evidence based.

Wellness Committee

The school district will establish a wellness committee that consists of at least one (1): parent/guardian, student, nurse, school food service representative, school administrator, and other community members as appropriate. If available, a qualified, credentialed nutrition professional will be a member of the wellness committee. The school committee designates the following individual(s) as wellness program coordinator(s): Mark Balestracci (Assistant Superintendent) and Nicholas Pilla (Teacher/Administrator Intern). Only employees of the district who are members of the wellness committee may serve as wellness program coordinators. Wellness coordinators, in consultation with the wellness committee, will be in charge of implementation and evaluation of this policy. The Wellness Committee will review this plan for compliance and necessary revision at a minimum of every 2 years.

Nutrition Guidelines

It is the policy of the Fairhaven Public Schools that all foods and beverages made available on campus during the school day are consistent with School Lunch Program nutrition guidelines. Guidelines for reimbursable school meals will not be less restrictive than regulations and guidance issued by the Secretary of Agriculture pursuant to law. The district will create procedures that address all foods available to students throughout the school day in the following areas:

- All reimbursable school meals will meet federal requirements according to the [Healthy, Hunger-Free Kids Act](#).
- Students receiving free or reduced price meals will remain confidential and cannot be identified, pursuant to [Massachusetts Universal Free School Meals Program](#), M.G.L. Chapter 69 Section 1(C)
- Students in grades K-12 will have access to free, potable water during the school day, including during meals.
- All foods and beverages sold to students in grades K-12 during the school day, including: a la carte items, vending machines, school stores, etc., will meet [USDA Smart Snack Standards](#) and the MA standards.
- Foods and beverages optionally served (not sold) at parties and celebrations in grades K-12 will meet [USDA Smart Snack standards](#) and the MA standards.
- All foods and beverages marketed in school and on school grounds (cafeterias, stadiums, websites, scoreboards, coolers, educational materials, vending machines, etc.) meet [USDA Smart Snacks standards](#).

- An effort will be made to provide locally grown food and incorporate it into school meals.
- Schools should discourage students from sharing their foods or beverages with one another during meal or snack times, given concerns about allergies and other restrictions on some children's diets.
- Schools will promote the use of non-food items for fundraising activities and will make available to the school community a list of alternative ideas for fundraising activities.
- Beverages in school should only include water or seltzer water without added caloric sweeteners; fruit and vegetable juices and fruit-based drinks that contain 100% fruit juice and that do not contain additional caloric sweeteners; unflavored or flavored low-fat or fat-free fluid milk and nutritionally-equivalent non dairy beverages (to be defined by [USDA](#)).
- Schools will provide students with adequate time to eat lunch, appropriate to each age group. Lunches will be scheduled at times consistent with our students' need for nutrition, fluids, and socialization opportunities within the school day.
- All school nutrition program directors, managers and staff will meet or exceed hiring and annual continuing education/training requirements in the USDA professional standards for child nutrition professionals. These school nutrition personnel will refer to [USDA's Professional Standards for School Nutrition Standards](#) website to search for training that meets their learning needs.
- Staff shall not provide students with food, candy or beverages that do not meet the nutritional requirements referenced in this policy.
- Schools will not use foods or beverages, especially those that do not meet the nutrition standards for foods and beverages sold individually (above), as rewards for academic performance or good behavior, and will not withhold food or beverages (including food served through school meals) as a punishment.
- School-based marketing will be consistent with nutrition education and health promotion. As such, schools will limit food and beverage marketing to the promotion of foods and beverages that meet the nutrition standards for meals or for foods and beverages sold individually (above). School-based marketing of brands promoting predominantly low-nutrition foods and beverages is prohibited. The promotion of healthy foods, including fruits, vegetables, whole grains, and low-fat dairy products is encouraged.
- School spaces and facilities should be available to students, staff, and community members before, during, and after the school day, on weekends, and during school vacations. These spaces and facilities also should be available to community agencies and organizations offering physical activity and nutrition programs. School policies concerning safety will apply at all times.

Nutrition Education Goals

Fairhaven Public Schools is committed to providing students nutrition education that teaches the skills they need to adopt and maintain healthy eating behaviors.

- Nutrition education is offered in the school cafeteria as well as in the classroom, with coordination between the foodservice staff and other school personnel, including teachers.
- The school cafeteria serves as a learning opportunity to allow students to apply critical thinking skills taught in the classroom; for example providing choices.
- Students receive consistent nutrition messages from all aspects of the school program.
- Division health education curriculum standards and guidelines address both nutrition and physical education.

- Nutrition is integrated into the health education or core curricula (e.g., math, science, language arts) when applicable.
- Schools link nutrition education activities with the coordinated school health program.
- Staff who provide nutrition education have appropriate training.
- The level of student participation in the school breakfast and school lunch programs is appropriate.
- Professional development activities for nutrition education will be made available to staff.
- Nutrition education will include instruction related to awareness of media literacy as it relates to food advertising and its effects on health.
- Nutrition education will involve sharing information with families and the broader community, PTO, and School Councils to positively impact students and the health of the community.
- School district will provide information to families that encourage them to teach their children about health and nutrition and to provide nutritious meals for their families.

Physical Education Activity Goals

Fairhaven Public Schools believe the primary goal of physical activity is to provide opportunities for every student to develop the knowledge and skills for specific physical activities, regularly participate in physical activity, and understand the short and long-term benefits of a physically active and healthy lifestyle.

- Students in grades K-12 receive physical education that promotes lifelong skills and aligns with the [state and national education standards](#).
- Students are given opportunities for physical activity through a range of before- and/or after-school programs including, but not limited to, intramurals, interscholastic athletics, and physical activity clubs.
- Schools work with the community to create ways for students to walk, bike, rollerblade or skateboard safely to and from school.
- Physical activity should be integrated across curricula when possible.
- Each school will provide a physical and social environment that encourages safe and enjoyable activities for all students, not limited by athletic ability.
- Schools provide training to enable staff to promote enjoyable, lifelong physical activity among students.
- Information will be provided to families to help them incorporate physical activity into their children's lives.
- The opportunity for fitness activities and nutritional education workshops will be offered to the staff.
- Students in grades K-12 cannot substitute sports or clubs for PE.

Social and Emotional Wellness

All District schools shall provide a school climate that values the social and emotional well-being of students, families and staff. This will include opportunities to develop and practice the skills needed to understand and respect the diversity of our community.

- The District shall provide a supportive environment that includes guidance, counseling and school social work services that encourage students, families and staff to request assistance when needed and links them to school or community resources.
- Students and staff shall be encouraged to balance work and recreation and helped to become aware of stressors which may interfere with healthy development, and personal wellness and productivity.

- Students will be provided educational opportunities to reflect and improve upon their social-emotional skills.

Health Services

- A coordinated program of accessible health services shall be provided to District students and staff and shall include, but not be limited to, violence prevention, school safety, communicable disease prevention, health screenings, community health referrals, immunizations, parenting skills, first aid and other priority health education topics.

Evaluation

The Fairhaven Public Schools Wellness Committee will conduct an annual assessment of its Wellness Policy via the [WellSat 3.0 Assessment Tool](#) provided by the University of Connecticut and Rudd Center for Food Policy and Health. Results of the assessment will be posted for public access on the [Fairhaven Public Schools Website](#) under the “Wellness” tab.

The wellness committee will assess all education curricula and materials pertaining to wellness for accuracy, completeness, balance and consistency with the state and district's educational goals and standards. Wellness program coordinators shall be responsible for devising a plan for implementation and evaluation of the district wellness policy and are charged with operational responsibility for ensuring that schools meet the goals of the district wellness policy. Wellness program coordinators will report to the School Committee annually. This plan will be reviewed and updated at a minimum of every 2 years.

SOURCE: MASC - Updated Cross References 2023

LEGAL REFS.: The Child Nutrition and WIC Reauthorization Act of 2004, Section 204,
P.L. 108 -265

The Richard B. Russell National School Lunch Act, 42 U.S.C. §§ 1751 - 1769h

The Child Nutrition Act of 1966, 42 U.S.C. §§ 1771 - 1789

M.G.L. [111:223](#)

105 CMR 201

CROSS REFS.: [EFC](#), Free and Reduced-Cost Food Services

[IHAMB](#), Teaching About Alcohol, Tobacco and Drugs

[KHA](#), Public Solicitations In The Schools

[KHB](#), Advertising In The Schools

EFC - UNIVERSAL FREE SCHOOL MEALS

The School Committee is committed to providing students with healthy, nutritious meals each day so they can focus on school work, while also maintaining the financial integrity of meal programs, and to ensure compliance with federal reporting requirements of the [USDA Child Nutrition Program](#).

The District will participate in the [National School Lunch Program](#), the [Massachusetts Universal Free Meals Program](#), and other food programs that may become available to assure that all students in the schools receive healthy, nutritious school meals.

In accordance with guidelines for participation in these programs, the District will provide universal free meals to all students in the District.

Students seeking additional meals or a la carte items will be charged accordingly for those additional items.

Each student in the District is entitled to (1) free breakfast, (1) free lunch, and (1) free snack (where provided by the District.)

- It remains important that families complete the annual Household Application for Free and Reduced Price Meals. This form allows the school district to serve families more effectively for other important programs such as P-EBT benefits, fee waivers for school district programs/ services, (as determined by each school district), state and federal grant eligibility, and more.
- Districts participating through the Community Eligibility Provision (CEP), serve breakfast and lunch at no cost to all enrolled students without collecting household applications.

As required by state and federal regulations, the School Committee approves this policy statement pertaining to eligibility for universal free school meals for all students in the District.

CROSS REF: [EFE](#), Civil Rights Complaint Policy for Child Nutrition Programs

LEGAL REFS.: National School Lunch Act, as amended (42 USC 1751-1760);

Child Nutrition Act of 1966; P.L. 89-642, 80 Stat. 885, as amended;

[USDA School Meal Program Guidelines May 2017](#);

M.G.L. 71:72; 15:1G; 69:1C;

Chapter 28 of the Acts of 2023 7053-1909

SOURCE: MASC - Complete rewrite 2023

File: EFD - SCHOOL NUTRITION PROGRAM CHARGE POLICY

The School Committee is committed to providing students with healthy, nutritious meals each day so they can focus on school work, while also maintaining the financial integrity of meal programs. and minimizing any impact on students with charges for a la carte purchases.

The District provides free meals to all students (one free meal per meal service period.). However, unpaid charges for additional meals, or a la carte items place a large financial burden on the school district, as food services is a self-supporting entity within the district. The purpose of this policy is to ensure compliance with federal reporting requirements of the USDA Child Nutrition Program, as well as provide oversight and accountability for the collection of outstanding student balances.

Charges and Balances

Each student will be allowed to take one regular meal per meal service period. Students may want to receive additional meals, or to purchase a la carte items. Students will pay for additional meals at the regular rate approved by the School Committee. Student Accounts will be maintained by the [District Food and Nutrition Program](#) as prescribed by the District and delineated in the Student Handbook.

The parent/guardian is responsible for any meal charges incurred beyond the free meals provided. If there is a financial hardship, a parent/guardian should contact food services directly to discuss payment options such as an individualized repayment plan.

Payments

Payments for additional food purchases beyond the regular meal will be made to the District Food and Nutrition Program. Parents will be notified of account balances or deficits at regular intervals as prescribed by the District. At no time shall any staff member give payment notices to students unless that student is known to be an emancipated minor who is fully responsible for themselves or over the age of 18. If parents/guardians have issues with student purchases they should contact for assistance.

Parents/Guardians may pay in advance for anticipated purchases beyond the free meal allowed during each meal service period. Further details are available on the school district webpage and in student handbooks and can also be found at [MySchool Bucks](#). Funds should be maintained in accounts to minimize the possibility that a child may be without a positive balance in their account on any given day. Any remaining funds for a particular student, whether positive or negative, will be carried over to the next school year.

All school cafeterias possess computerized point of sale/cash register systems that maintain records of all monies deposited and spent for each student and those records are available to