



## DAVE ANDREWS

### Principal, Landscape Architect

Dave has significant experience across a range of scales and project types including public parks, waterfronts, master planning, urban design, rail trails, streetscapes, and affordable housing projects. He is adept at finding creative solutions to complex site design challenges, designing engaging public spaces, and developing climate resilience strategies on many urban and waterfront projects. Dave has extensive experience working with public agencies and is a skilled communicator who helps translate complex project requirements to project stakeholders. He enjoys the challenge of revitalizing brownfield sites and expanding access to new public spaces. Dave is available to devote the time needed for this project.

### EDUCATION

Dublin Institute of Technology,  
Masters in Design Practice  
2013

University of Massachusetts  
Amherst, Bachelor of Science  
in Landscape Architecture  
2002

### REGISTRATIONS

Registered Landscape Architect  
in Massachusetts (Reg. #4239)  
and in the Republic of Ireland

### EMPLOYMENT

Brown, Richardson + Rowe  
May 2014+

Mitchell + Associates  
Dec 2013 - April 2014

Self-Employed Landscape  
Architect 2009-2013

Mitchell + Associates  
2006-2009

Carducci Associates  
2003-2006

### PUBLICATIONS

*Lynn Waterfront Open Space  
Master Plan for The Executive  
Office of Energy and  
Environmental Affairs, the  
Department of Conservation  
and Recreation, and the City  
of Lynn*  
September 2019

*Donabate Housing Master  
Plan Path and Park Report,  
for McGarrell Reilly Group*  
April 2015

### PROFESSIONAL EXPERIENCE

#### Master Planning + Urban Design

**Hyannis Harbor MVP Resilience Plan**, *Hyannis, MA* with Fort Point Associates for the Town of Barnstable

**Hyannis Harbor Master Plan**, *Hyannis, MA* with Foth Engineering for the Town of Barnstable

**Gloucester Municipal Harbor Plan**, *Gloucester, MA* with Utile

**Lowell Master Plan**, *Lowell, MA* with Utile

**Lynn Comprehensive Plan**, *Lynn, MA* with Utile

**Lynn Waterfront Open Space Master Plan**, *Lynn, MA* for the EOEEA

**Nashua Master Plan**, *Nashua, NH* with Utile

**Worcester City-wide Plan**, *Worcester, MA* with Utile

#### Parks + Trails

**Gateway City Parks Program**, for the Executive Office of Energy and Environmental Affairs:

**Brockton City Hall Plaza**, *Brockton, MA*

**Chelsea Greenway Trail**, *Chelsea, MA*

**Concord River Greenway**, *Lowell, MA*

**Lynn Harbor Park**, *Lynn, MA*

**Lynn Heritage State Park**, *Lynn, MA*

**Lynn South Harbor Fishing Pier**, *Lynn, MA*

**Methuen Rail Trail and Community Green**, *Methuen, MA*

**Monoosnoc Brook Walk Phase II**, *Leominster, MA*

**New Bedford River Walk**, *New Bedford, MA*

**Twin Cities Rail Trail**, *Leominster, Fitchburg, MA*

**Lynn Harbor Park Shoreline Restoration**, *Lynn, MA* for the City of Lynn

**Chelsea Creek Open Space**, *Chelsea, MA*

**Crite Park**, *Boston, MA* with GPI for the Boston Public Works Department

**Frederick Douglass Park**, *Boston, MA* with GPI for the BPWD

**Lusk Open Space**, *Lusk, Ireland* for McGarrell Reilly Group

**Stepaside Open Space**, *Stepaside, Ireland*, for McGarrell Reilly Group

#### Transportation + Streetscapes

**Boston Transit Team On-Call**, *Boston, MA* with Nelson/Nygaard for the Boston Transportation Dept.

**Canal Street**, *Boston, MA* with GPI for the Boston Public Works Department

**I-90 Allston Multimodal and Shoreline Restoration Project**, *Boston, MA* with Tetra Tech for MassDOT

**Martha's Vineyard Airport**, *Martha's Vineyard, MA* for the Martha's Vineyard Airport Commission

**Salem Commuter Rail Station**, *Salem, MA* with Fennick McCredie Architects for the MBTA

#### Historic Landscapes

**Coolidge Point**, *Manchester-by-the-Sea, MA* for Historic New England

**Frances Perkins Homestead**, *Damariscotta, ME* for the Frances Perkins Center



# John C. Martin, PhD

President, Martin Associates

## Details

### Position

Founder and President  
Martin Associates

### Disciplines

- Economics
- Strategic Planning
- Market Analysis
- Financial Analysis
- Logistics Cost Analysis
- Master Planning
- Economic Impact Analysis

### Qualifications

- BS Economics (cum laude) Millersville University, 1973
- MPhil. Economics, The George Washington University, 1976
- PhD, Economics, The George Washington University, 1978

### Key Skills

- Project Management
- Econometrics
- Financial Modeling
- Terminal Concession Valuations
- Cargo Projections
- Conference Speaker

## Synopsis

Dr. John Martin is president of Martin Associates, which he founded in 1986, and has provided economic, market and planning studies to most of the seaports in the United States. He also provides ongoing economic and planning consulting services to terminal operators, ocean carriers, and government agencies, as well as to the major airports in the United States. Over the past 50 years, Dr. Martin has conducted more than 3,500 port economic, planning and marketing studies for seaports, terminal operators and ocean carriers in the United States, Africa, Asia, Europe, the Caribbean and South America. He has been involved in assessing the economic costs of terminal congestion at container terminals, the impact of restrictive trade policies on the marine transportation system, and the integration of ports into the logistics strategies of major importers and exporters.

Dr. Martin developed the Martin Associates' Economic Impact methodology in 1980 which has become the industry standard approach to articulating the economic impacts of seaport, airport, cruise, shipyard, and maritime real estate activity. He has measured the economic impact of more than 1,100 ports. He has used this methodology to quantify the economic impacts for the U.S. Coastal ports for the American Association of Port Authorities and developed statewide impact models for the Texas Public Ports, the state of Florida Port System, the economic impacts of the Great Lakes/St. Lawrence Seaway Transportation system on the U.S. and Canadian Economies, and the impacts of the Canadian Port System. He was deeply involved in evaluating the economic impacts of the West Coast Port shutdown in September 2002. As part of that analysis, he worked closely with the U.S. Federal Reserve Board of Governors, the Bush Administration, and the U.S. Council of Economic Advisors in assessing the timing of the enactment of Taft Hartley Act. He developed the economic analyses to support the Pacific Maritime Administration in the 2014-2015 contract negotiations with the ILWU, and also supported the USMX in the contract negotiations with the ILA. He recently developed several economic impact analyses in supporting the Pacific Maritime Association in the 2022 labor contract negotiations with the ILWU.

For the Marine Transportation System National Advisory Council, Dr. Martin was the principal author of U.S. Economic Growth and the Marine Transportation System (December 2000), which documented the economic value of the MTS and further identified the key constraints and issues facing the MTS. This report was used by the Bush Administration transition team lead by Vice President Cheney to review and formulate U.S. Maritime Policy.

Dr. Martin has conducted numerous economic benefit -cost studies of channel deepening and widening as well as studies regarding the economic benefits of channel maintenance dredging. Dr. Martin has conducted benefits analysis for numerous navigational projects, including:

- Deepening of the St. Johns River in Jacksonville
- Economic benefits of maintaining the C&D Canal at its current depth
- Economic benefit cost analysis of maintaining the Port of Baltimore's main shipping channel at 50 ft.
- Economic benefits of deepening the PortMiami Shipping Channel to 50 ft.



- \* Economic benefits of Deepening the Port of Stockton Shipping Channel
- \* Economic benefits of maintaining the Port of Oakland Shipping Channel
- \* Economic benefits of deepening the Port Everglades Shipping Channel

With respect to TIGER, BUILD, INFRA, PIDG, MEGA and RAISE grant analysis, Dr. Martin has conducted benefits cost analyses of port projects for the Ports of Baltimore, Corpus Christi, Miami, Tampa, Galveston, Cleveland, Fernandina Beach, Port Hueneeme, Everett, Seattle, Tacoma, Panama City, and Port Canaveral. Dr. Martin has also developed the ROI and benefits-cost analysis to secure state funding for channel deepening projects at PortMiami, the Port of Jacksonville, and the Port of Mobile. Martin Associates has also developed the economic impact models for the state of Florida which are used by the Florida Ports Council and ISTED (Florida DOT) to award state grants for port development projects.

Dr. Martin has developed detailed financial analysis and terminal valuation studies for the Hawaii Department of Transportation, Harbors Division; Diamond State Port Corp. (Port of Wilmington, DE); the Philadelphia Regional Port Authority; the Port of Galveston; the Maryland Port Administration; Jacksonville Port Authority; Unified Port of San Diego; the Port of Ponce (Puerto Rico); Virgin Island Port Authority; Port Canaveral, Port Everglades, and a planned container terminal in Trinidad. He also provides the economic valuations of individual terminal operations for our financial investment groups including Macquarie, First Sentier, UBS, Bank of Montreal, Goldman Sachs, Fortress, Och Ziff, to name a few. He has advised key terminal operators as to terminal investments including PSA, Hutchison Port Holdings, Ports America, and CMA-CGM. These valuation studies have been used in port specific strategic planning studies, as well as in the establishment of lease structures and in the development of terminal concession agreements.

Dr. Martin assists numerous port authorities with respect to the marketing of specific marine terminals for public-private partnerships and the development of terminal valuations to be used in lease negotiations. As part of these public-private partnership studies, he has worked with several major investment banks in preparing potential market assessments as well as pro-forma analysis for proposed concession agreements. For several terminal operators, he has directed reviews of key ports in which the terminal operators operate, and these studies are being used to assist in terminal financing investments by private sector investment firms.

Dr. Martin has directed *market and strategic planning studies* for many ports throughout the U.S., the Caribbean, Europe, and Asia. These projects include the strategic master plan for the Port of Jacksonville which included a detailed assessment of distribution facility opportunities and the development of the new SSA Broom Island Container Terminal in Jacksonville; the long term master development plan for the Port of Baltimore and the valuation analysis of the Seagrin Container Terminal that lead to the 50 year concession with Ports America Chesapeake; the strategic plan for the Port of Oakland; the financial valuation for the development of the unified Port of Seattle and Tacoma; the cargo market portion of PortMiami Master Plan; the lease and terminal evaluation study for the Port of Port of Everett; the strategic business plan for the Port of Jacksonville, including terminal valuation analysis and optimization of current facilities capacity; the strategic market plan for Port Canaveral, including the feasibility of the development of new services to and from the Caribbean and Central America and the development of logistics supply chains to serve the central Florida distribution center market; the strategic feasibility study for Panama; the strategic plan and terminal pricing study for the Puerto Rican free trade zone; the economic and financial feasibility study for a new bulk and container terminal in Trinidad; the economic and strategic master development





## EXPERIENCE SUMMARY

Mr. Beck has more than 30 years of experience in maritime operations and the offshore energy sector. He is an expert in navigational safety risk assessments and the impacts of wind farms on marine navigation. Former roles include leadership of Tetra Tech's wind farm navigational safety risk assessment activities as well as the development of Waterway Suitability Assessments for LNG and LPG facilities. Prior to joining Tetra Tech, he served in the Coast Guard, first as a Coast Guard officer and then a civilian member of the First Coast Guard District where he was the Chief of the Maritime Energy Branch. In that capacity, he was the program manager for the permitting of offshore renewable energy projects including wind farms and hydrokinetic projects. He was also the program manager for the permitting of LNG and LPG facilities. Appointed the agency representative for the Northeast Regional Planning Body, he was lead author for Coast Guard input to the regional ocean plan, part of the President's National Ocean Planning process. Member of the Coast Guard's Atlantic Coast Port Access Route Study team where he helped develop potential vessel routing measures for vessel traffic near offshore wind farms.

## RELEVANT EXPERIENCE

**Bay State Offshore Wind (BSOW) Farm, Ørsted, MA, 2016 to 2023.** Senior Consultant, managing development of the Navigational Safety Risk Assessment, Tetra Tech Health and Safety Officer for Construction and Operations Plan activities, Tetra Tech Quality Manager for BSOW project. Developed the Commercial and Recreational Navigation section of the Preliminary Environmental Information Report (PEIR) and developed the Marine Transportation and Navigation section of the COP. Worked with numerous community stakeholders as Coast Guard representative for four state task forces during early stages of wind farm permitting.

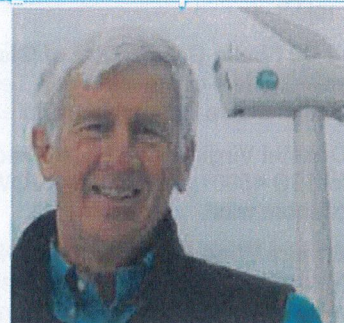
**MA/RI Wind Energy Area, New Bedford, MA, 2018.** Senior Consultant, Provided subject matter expertise for Developer's Conference on Transit Corridors.

**Fisheries Advisory Panel, New Bedford, MA, 2018.** Senior Consultant provided subject matter expertise on impacts from Bay State Wind and other offshore wind projects on commercial fishing.

**Marine Commerce Terminal Groundbreaking, New Bedford, MA, 2013.** Represented Tetra Tech and participated in site familiarization.

**Marine Commerce Terminal, New Bedford, MA, 2018 to 2019.** Provided installation services for AIS data acquisition aboard three research vessels.

**Mass Maritime Offshore Wind Regulatory Framework Meeting, Boston, MA, 2017.** Represented Mass Maritime Offshore Wind Workforce Development Team in this unique multi-agency reconciliation of regulations and other guidance for offshore wind.



### Education

MSE, Naval Architecture and Marine Engineering, University of Michigan

MSE, Industrial and Operations Engineering, Human Factors, University of Michigan

BS, Marine Engineering, USCG Academy

### Area of Expertise

Navigational Safety Risk Assessments

Health and Safety Management

### Registrations/Affiliations

Professional Engineer, CT (inactive)

### Training/Certifications

ISO 45001 OH&S Management

Master Mariner, 100 GT, Sailing and towing; USCG; 2000

### Office

Boston, MA

### Years of Experience

30+

### Years within firm

10

### Contact

Ron.beck@tetrattech.com



**Block Island Wind Farm, Export & Crescent Beach Landing Rebuild, Global Marine, RI, 2021.** Global Marine's designated HSE Representative for the land works portion of the project. Worked closely with Ørsted owner's representatives and the union electrical contractors to achieve a zero-incident safety record for the project.

**I4-C2 Focus Group, City of Gloucester, MA, 2013 to 2015.** Senior Consultant. Worked with other port stakeholders to provide Tetra Tech business requirements for the Marine Innovation Center Concept Study to the Gulf of Maine Research Institute and the MA Urban Harbors Institute.

**Coastal Virginia Offshore Wind Pilot Project (CVOWP), Dominion Energy, VA, 2020 to 2021.** Lead Auditor for ISO 45001 audit of the CVOWP Safety Management System (SMS). A first-of-its-kind SMS audit for US offshore wind.

**Empire Wind Farm, Equinor, New York Bight, 2017 to 2022.** Senior Consultant. Managed development of the Navigational Safety Risk Assessment, contributed to the Construction and Operations Plan (COP), supported waterway stakeholder management, and provided federal regulatory support.

**Coastal Virginia Offshore Wind Commercial Project (CVOWC), Dominion Energy, VA, 2013 to 2023.** Senior Consultant, focused on navigational risk assessments, traffic analysis. Team Lead for Search and Rescue (SAR) considerations analysis. Lead author for several Construction and Operations Plan sections.

**Kitty Hawk Offshore Wind Project, Avangrid Renewables, NC.** Responsible for oversight of development of the Navigational Safety Risk Assessment including vessel traffic analysis and application of Collision Risk Analysis. Developed Navigation and Military Issues section for the Critical Issues Analysis (CIA). Authored several sections of the Construction and Operations Plan (COP).

**Deepwater Wind Block Island Wind Farm and Block Island Transmission System, RI, 2013 to 2017.** Senior Consultant, focused on navigational risk assessments, traffic analysis, and compliance with federal and state regulations. Developed the Health and Safety Plan for the project and served as SSHO/Person in Charge for Tetra Tech team during final acoustic survey and recovery of hydroacoustic devices.

**Virginia Offshore Wind Technology Advancement Project (VOWTAP), Dominion Power, VA, 2013 to 2015.** Senior Consultant, focused on navigational risk assessments, traffic analysis, and compliance with federal and state regulations. Worked with DoD and service branches to assess and mitigate impacts on military training and operations due to the development of VOWTAP and its export cable.

**SeaLink HVDC Project, New Hampshire Transmission, NH, 2013 to 2016.** Tetra Tech team member, coordinating community outreach and vessel support in Gloucester, MA and nearby communities. Served as Designated Person Ashore for the ORV Sea Lion V and provided shoreside vessel engineering support.

**Island Transit, Inc., Bahamas and West Indies, 2002 to 2004.** Owner/operator US-flag cargo vessel servicing the Exuma islands in the Bahamas. Developed a sustainable international cargo business that remains in operation after more than 20 years.



## Joseph Famely, WEDG

*Climate & Sustainability Team Lead*

### EXPERTISE

Focused on environmental and sustainability planning, Mr. Famely has expertise in assessing climate change vulnerability and risk for infrastructure and natural resources, and developing adaptation and resiliency plans for communities and organizations. As a trained provider in the Massachusetts Municipal Vulnerability Preparedness (MVP) Program, he has facilitated community engagement workshops following the Community Resilience Building Framework and successfully obtained funding through the MVP Action Grant program.

In addition to numerous sea level rise and storm surge vulnerability assessments, he has developed customized greenhouse gas assessment tools to help organizations benchmark and track their carbon footprints and prepare sustainability reports, and led strategic land use planning projects.

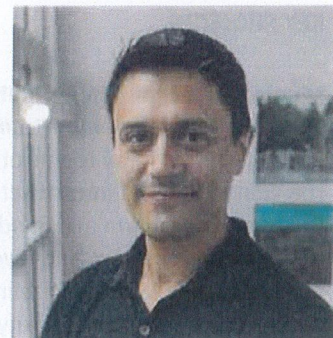
Mr. Famely's background in risk assessment, urban ecology, and environmental design brings a systems thinking approach to projects and facilitates collaboration with engineering and design professionals, as well as with clients and stakeholders.

### QUALIFICATION SUMMARY

- 20+ years experience in environmental science and climate planning
- Certified MA Municipal Vulnerability Preparedness Program Provider
- Certified Waterfront Edge Design Guidelines (WEDG) Professional
- Climate change vulnerability assessment / adaptation planning
- Land use sustainability planning and metrics
- Greenhouse gas inventory and sustainability reporting
- Environmental impact statements
- Project management and grant writing

### WORK EXPERIENCE

2009–Present	Woods Hole Group, Inc. (Senior Resiliency Specialist)
2011–2012	Except Integrated Sustainability (Sustainability Consultant)
2009–2012	Anthroecology (Sustainability Consultant)
2008–2008	Yale Urban Design Workshop (Sustainability Planning Fellow)
2006–2007	Exponent (Environmental Scientist)
2000–2006	Menzie-Cura & Associates (Environmental Scientist)



### Education

2009 – M.E.M.  
*Yale School of the Environment*

2000 – B.A.  
*Bowdoin College*

### Licenses & Registrations

- MA EOEEA Municipal Vulnerability Preparedness (MVP) Program Provider
- Waterfront Alliance's Waterfront Edge Design Guidelines

### Professional Affiliations

- Environmental Business Council, Climate Change & Air Committee Member
- Climate Adaptation Forum, Steering Committee Member

### Publications & Presentations

7

Joseph Famely  
Climate & Sustainability Team Lead  
jfamely@woodsholegroup.com  
+1 508.495.6220



## KEY PROJECTS

### **Municipal Coastal Vulnerability Assessments and Adaptation Plans (Duxbury, Edgartown, Sandwich)**

#### ***Project Manager, Senior Resiliency Specialist***

Led multidisciplinary teams of engineers, planners, municipal officials and local stakeholders in assessments of the vulnerability of infrastructure and natural resources to the impacts of sea level rise and storm surge in Duxbury, Edgartown and Sandwich. Funded by the MA EOEEA Municipal Vulnerability Preparedness (MVP) Action Grant program and leveraging the Massachusetts Coast Flood Risk Model, these projects used a risk-based approach to prioritize investment in adaptation projects over time and develop conceptual level adaptation designs for priority assets.

### **Hyannis Harbor MVP Resilience Plan**

#### ***Senior Resiliency Specialist***

Contributed coastal resilience guidance for a master planning project in Hyannis Harbor. Led the development of a site-specific coastal vulnerability assessment for town-owned and private assets, the derivation of harbor specific design flood elevations for future sea level rise and coastal storms, and the generation of adaptation and resilience recommendations and concept plans. Provided review and input on land use, harbor use, zoning and economic development recommendations through a coastal resilience lens. Project concepts centered on physical and regulatory adaptations that enhance appropriate waterfront uses considering future coastal and pluvial flooding while simultaneously maintaining the existing character of a village port.

### **ResilientWoodsHole**

#### ***Project Manager, Senior Resiliency Specialist***

Led a multidisciplinary team of engineers, planners, and research organization managers in an assessment of the vulnerability of infrastructure to the impacts of sea level rise and storm surge at Woods Hole Oceanographic Institution, the Marine Biological Laboratory, and the NOAA Northeast Fisheries Science Center. The project prioritized and has begun to design and implement facility-level floodproofing and a dune restoration project to close a major flood pathway in the village. Acknowledging the interdependencies among the scientific institutions, the business community, the residential community and the Town of Falmouth, the initiative expanded vulnerability assessments into the broader community and initiated a phased approach to coastal resilience planning using the dynamic adaptive policy pathways framework. Significant community outreach and engagement has included community surveys, several in-person and remote workshops, web-based map viewers with capacity for geo-located commenting, tabling at community events, and the development of an innovative self-guided multimedia climate walking trail app.

### **Feasibility of Harbor-wide Barrier Systems: Preliminary Analysis for Boston Harbor**

#### ***Lead Geospatial Analyst, Senior Resiliency Specialist***

Developed a detailed inventory of district shoreline solutions necessary throughout the Boston region through 2100 to plan adequate protection under various Harbor Barrier and No Harbor Barrier alternatives. Also analyzed the areas of avoided flood risk over time based on these adaptation alternatives. Both assessments were used to inform the benefit/cost analyses in the report.





**Natty King**

**Environmental/Urban Planner**

## Summary

Nathaniel (Natty) King is an Environmental/Urban Planner who supports public infrastructure, coastal resilience, and waterfront real estate projects across Massachusetts. His primary duties include conducting regulatory analyses on environmental and land use controls applicable to waterfront sites to inform planning efforts, participating in community/stakeholder engagement initiatives, and preparing narrative and graphics content for MEPA, Chapter 91, Wetlands Protection Act, and 401 Water Quality Certification permit applications. He has provided planning and permitting services for multiple projects within DPAs including the Island End River Flood Resilience project in Chelsea and Everett. His additional relevant experience includes the Salem Offshore Wind Terminal, Dorchester Resilient Waterfront, and the Harborview project within the historic Charlestown Navy Yard.

Prior to joining FPA, Mr. King was a Lowell L. Richards, III Fellow for Leadership and Public Service in Massport's Real Estate & Asset Management Division. In this position, he supported planning for a Resilient Harborwalk across Massport's landholdings on the South Boston Waterfront. Mr. King is highly proficient in GIS, having served as a technical lead on a wide variety of spatial analysis, mapping, and data development projects for local and state agencies. Interestingly, Mr. King's Master's thesis analyzed the Port of New Bedford, focusing on the importance of harbor planning and the interplay between its long history as a leading commercial fishing port and key contemporary role as a host of offshore wind staging terminals. He is excited to contribute to the success of this project.

## Relevant Experience

**Island End River Flood Resilience Project – Cities of Chelsea and Everett, MA.** As a Planner, Mr. King is supporting this project, which includes state and federal grant writing, planning, permitting, design, and stakeholder engagement. He collaborates extensively with the two cities to pursue climate resilience planning goals and master permitting for projects focused on the IER corridor, which falls partially within the Mystic River DPA. Mr. King works with the team to evaluate flood resilience barriers to address coastal storm surge risk in this critical region and helps to build consensus with key project stakeholders. He is contributing to narrative and graphics development for permit applications for the Chapter 91, 401 Water Quality Certification, and Clean Water Act Section 404 regulatory programs. He also supported the now-completed MEPA review process and participated in public engagement and agency outreach efforts.

**Salem Offshore Wind Terminal – Salem, MA.** Mr. King is providing permitting services for an offshore wind terminal development in Salem. He is part of the FPA team conducting the environmental studies necessary to support the permitting process for the development of a new heavy-lift deployment terminal for offshore wind marshalling operations for both fixed-bottom and floating offshore wind platforms. FPA is utilizing a streamlined permit acquisition strategy to move the project forward through design, permitting, and construction. To date, Mr. King has contributed narrative and graphics content to the project's Chapter 91 License and Section 404 permit applications and conducted



**Fort Point Associates, Inc.**  
Urban Planning Environmental Consulting Project Permitting  
A TETRA TECH COMPANY



vessel emissions modeling. FPA also provided extensive community and stakeholder engagement over a 2-year period including public meetings and hearings with local and state agencies, and presentations to local stakeholders and advocacy groups. FPA's work involved preparing written and verbal responses to public comments that helped people understand the project, impacts, and mitigation measures.

**PreFlight Airport Parking – Chelsea, MA.** Mr. King is providing regulatory compliance and permitting services for a former petroleum terminal abutting Chelsea Creek that operates as a temporary airport-related parking facility. He has prepared a Wetlands Protection Act Notice of Intent for a public access point and contributed analysis and regulatory submissions in support of renewing the property's Chapter 91 license for a temporary use in a DPA.

**Marginal Street Emergency Repairs and Coastal Stabilization Study – Chelsea, MA.** FPA is leading efforts to stabilize and enhance Marginal Street, a key trucking corridor that provides access to waterfront industrial properties in the Chelsea Creek DPA. Mr. King coordinated design and helped secure emergency authorization from the Chelsea Conservation Commission to stabilize a section of the roadway that had been significantly eroded due to tidal flows, coastal storms, and marine vessel traffic in the adjacent Chelsea Creek. Mr. King also prepared a MA Gaming Commission Community Mitigation Fund grant application requesting \$677,000 in planning, design, and permitting funding for future phases of work on the corridor, currently under review.

**Dorchester Resilient Waterfront – City of Boston, MA.** As part of the Scape team, Mr. King is Project Planner for the development of implementable design solutions to protect the Dorchester waterfront and community from future sea level rise and coastal storm events. The project advanced design concepts in Dorchester, focusing on the flood pathways at Tenean Beach and Victory Park. He supported the assessment of the project design relative to environmental impacts and provided feedback on permitting requirements. Mr. King was a primary contributor to the permitting analysis deliverable included in the final report for the project published in 2023.

**Harborview – Charlestown, MA.** FPA supported development of a proactive environmental strategy to secure all regulatory approvals, including Chapter 91 licensing and local zoning, for the integration of the Harborview project within the historic Charlestown Navy Yard. FPA is currently working with the property owner to secure regulatory approvals for changing previously authorized ground floor programming at the site. As Planner, Mr. King helped develop a Notice of Project Change under the MEPA and has prepared documents for submission to the Massachusetts Department of environmental Protection for ongoing Chapter 91 compliance.

**Dow Brook Dam Improvements – Town of Ipswich, MA.** The Dow Brook Dam did not meet the DCR's Office of Dam Safety regulation 302 CMR 10.14(7), which requires a means to lower the reservoir in a reasonable amount of time. To reinstate a low-level drain from the reservoir and achieve ODS compliance, the team performed a conceptual alternatives analysis to identify a method of lowering the reservoir water level per state statute. Mr. King helped develop a successful Minor Project Modification request to authorize the project under Chapter 91.

**Mystic River Pedestrian Crossing Bridge – Somerville and Everett, MA.** FPA is supporting the AECOM team on the project, which entails the construction of a 12-foot-wide pedestrian and bicycle bridge over the Lower Mystic River. As Planner, Mr. King is responsible for developing application materials for submission to and approval by the United States Coast Guard, which is required for construction of new bridges over navigable waterways.

**310 Northern Avenue – Boston, MA.** Mr. King supported redevelopment of 310 Northern Avenue within the Raymond L. Flynn Marine Park; specifically, the development entitlements and the environmental review process for a new Supporting DPA Use. He contributed to the project's Chapter 91 License Application and developed a Notice of Intent for public realm improvements associated with the project.

#### Education

MA, Urban and Environmental Policy and Planning, Tufts University | BA, Geography, University of Vermont

#### Professional Affiliations

APA - MA Chapter (AICP Candidate) | EBC-NE, Ocean and Coastal Resources Committee Leadership Team Member







## EXPERIENCE SUMMARY

Mr. Gys has more than 20 years of experience as a GIS Analyst. His responsibilities include GIS project management and technical review; Geodatabase design; GIS data conversion, development, migration, and integration; GIS scripting and automation; and GIS/GPS deployment. He is an expert in GIS projects involving utility systems, energy planning/siting, asset management, and constraint/impact analysis. Mr. Gys has been GIS Coordinator for the Boston office since 2007.

## RELEVANT EXPERIENCE

**MS4 Compliance and EAM/Enterprise, City of Beverly, Beverly, MA, 2023 to Present.** On-call GIS services to support Municipal Separate Storm Sewer System (MS4) Compliance for the City of Beverly and development of Enterprise GIS to support the Electronic Asset Management (EAM) system. Works with client and third parties to integrate systems working towards enterprise access to data.

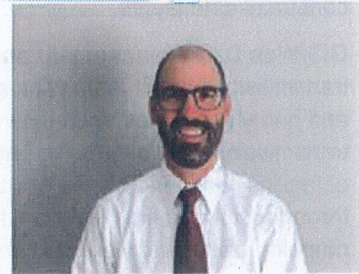
**Bluepoint COP and Permitting, Bluepoint Wind, NY and NJ, 2022 to Present.** Development of GIS mapping and analysis to support the NY and NJ Geotechnical Survey JPAs, multiple sections of the BOEM COP, and LOA/IHA requests to NMFS.

**Coastal Virginia Offshore Wind (CVOW), Dominion Energy, VA, 2022 to Present.** GIS support including the development of GIS materials in support of VA JPAs, all sections of the approved BOEM COP, LOA and IHA requests to NMFS, USACE Wetland Reports, Cable Burial Risk Assessment, and Post Construction Monitoring Plans.

**Kitty Hawk Offshore Wind Farm, Avangrid Renewables, 2018 to Present.** Manage all aspects of GIS for multiple offshore wind projects, including data collection, development, and management. Prepare and process data for a variety of onshore and offshore surveys. Provide data and analysis to support a variety of reports and studies. Provide figures for multiple reports, presentations, and public meetings.

**Empire Wind Offshore Wind Farm, Equinor, 2016 to Present.** Manage all aspects of GIS for multiple offshore wind projects, including data collection, development, and management. Prepare and process data for a variety of onshore and offshore surveys. Provide data and analysis to support a variety of reports and studies. Provide figures for multiple reports, presentations, and public meetings.

**Mountain Valley Pipeline Project, EQT, WV/VA, October 2014 to 2021.** Senior GIS Analyst supporting data development and state and federal permit applications for the 300-mile natural gas pipeline project. Aided in the collection, management, and development of over 100GB of GIS data used in



## Education

BA, Environmental Studies  
(Planning & Design), Denison  
University, 1999

BA, Studio Art, Denison  
University, 1999

## Training/Certifications

Communication Skills Training;  
2009

Communications Training; 2007

Conflict Management; 2008

Performance Management;  
2009

Practical Loss Control  
Leadership; 2008

Project Management Training  
Level 101; 2008

Project Management Training  
Level 201; 2008

Python Scripting for  
Geoprocessing Workflows;  
2013

Wind 101, 2017

## Office

Boston, MA

## Years of Experience

21

## Years within firm

15

## Contact

Todd.gys@tetrattech.com



planning and permitting. Worked closely with client, consultants, and contractors to support cultural and environmental permitting efforts on a state and federal level. Led interdisciplinary efforts across multiple Tetra Tech offices to support report submissions. Developed Python Geoprocessing scripts to aid in an alternatives analysis to quickly compare over 50 alternative routes covering nearly 2000 miles against various environmental constraint data layers.

**GIS/Web Data Management and Mapping Tool, Idaho Power Company, OR/ID, October 2008 to 2013.** The transmission project team uses a data management and mapping system to help plan transmission lines, develop and query databases, route new transmission lines, help manage construction, and assist in maintaining transmission lines once built. The system includes a web interface and integrates CAD, GIS, graphical depictions of facilities and landscapes, feature attributes, and a variety of user notes to facilitate managing transmission lines throughout the entire lifecycle – from planning to maintenance. Mr. Gys has aided in various geospatial analyses, mapping tasks, and viewshed analyses.

**Boardman to Hemingway Transmission Line Project, Idaho Power Company, OR/ID, February 2008 to 2013.** GIS Analyst supporting the Boardman to Hemingway Transmission Line Project. Idaho Power Company plans to construct, operate, and maintain a new electric transmission line, consisting of approximately 300 miles of single circuit 500kV transmission line and the construction of two new substations. Mr. Gys has aided in the management, organization, and development of over 150 GIS and CAD data layers. The data is collected from federal, state, and local agencies, as well as academic institutions and project sub-consultants. Tasks include initial transmission siting using a custom linear routing tool, field work and photo documentation, geodatabase maintenance, map production for over 60 graphical exhibits, including an 80-page map book, along with other analyses to assist in the siting and evaluation of the transmission line route.

**Viewshed analysis and modeling, Various Projects, 2007 to Present.** Designed and implemented viewshed analyses ranging in scope and use. Designed various models including simulations of human and avian typical vision, and simulated vegetation obstructions. Viewshed results have been used to aid the siting of new wind projects, determining best placement of transmission towers, and impacts of key observation points.


**Confidential Wind Farm Project, United States, December 2007 to 2008.** Project manager and analyst for constraints analysis on the largest windfarm siting project in the world (approximately 1.2 million acres). Analysis required the integration of available vector and raster data into a Geodatabase, and the creation of a variety of constraint layers. Constraint layers were developed on a feature-by-feature basis and varied from a simple buffer analysis to the creation of complicated FAA step-down approach zones. A viewshed and slope analysis were also conducted and combined with the other setback data to identify usable land for wind turbine placement.

**Rhode Island Offshore Wind Park, Bluewater Wind LLC, RI, October 2008 to 2011.** GIS Analyst for offshore wind and transmission siting efforts. Mr. Gys was responsible for data collection to support routing efforts, requiring him to collect and manage over 50 GIS data layers for offshore constraints. He assisted in map production for siting of onshore transmission routes, Fatal Flaw Analysis, and the Site Evaluation Report.

**Noise and Shadow Flicker Modeling, Various Projects, December 2007 to Present.** Conducted receptor studies for use in noise and shadow flicker modeling for various wind farms. Occupied and unoccupied structures were digitized and attributed with a type, using orthophotos and oblique imagery. Receptor data was combined with DEMs and delivered to modelers for final impacts which were then processed into final maps.

**Avian Survey Study for Proposed Wind Energy Facility, Confidential Client, December 2007 to 2010.** Mr. Gys' project responsibilities entailed creating an avian point count survey Geodatabase and survey sheets for use in the field. Mr. Gys processed all data from the field to create a database of avian flight patterns during three phases of the wind project; pre-construction, construction, and post-construction. Data was processed into a raster grid to show patterns of flight behavior as affected by the development of the wind farm.





# Appendix B Representative List of Experience in MA in Past Five Years



## Tetra Tech Infrastructure Northeast (INE)

### Representative Project List - Public Agencies - Last 5+ years

Project Name	Customer Name
FPA/AECOM EVERETT MA PERMIT	AECOM
ASSABET VALLEY HS/2023 UST	ASSABET VALLEY REGIONAL TECHNICAL HIGH SCHOOL
ASSABET VALLEY HS/2024 UST	ASSABET VALLEY REGIONAL TECHNICAL HIGH SCHOOL
BTD/49317/FY2023-01S/SIGNAL-OP	BOSTON TRANSPORTATION DEPARTMENT
BTD/49317/FY2023-02S/SIGNAL-OP	BOSTON TRANSPORTATION DEPARTMENT
BTD/49317/FY2023-03P/SIGNAL-OP	BOSTON TRANSPORTATION DEPARTMENT
BTD/61088/FY2024-03S	BOSTON TRANSPORTATION DEPARTMENT
BTD/61088/FY2024-04	BOSTON TRANSPORTATION DEPARTMENT
FPA/BEVERLY LYNCH PK COASTAL	CITY OF BEVERLY, MA
FPA/BEVERLY HMP UPDATE	CITY OF BEVERLY, MA
FPA/CHELSEA DPW MARGINAL ST	CITY OF CHELSEA
FPA/CHELSEA ST BRIDGE POINT	CITY OF CHELSEA
FPA/IER FLOOD RESILIENCE	CITY OF EVERETT PUBLIC WORKS
FPA/EVERETT PUMP STA & HRBRWLK	CITY OF EVERETT PUBLIC WORKS
FPA/LYNN MARINA PERMITTING	CITY OF LYNN MA
MANCHESTER BY SEA-CENTRAL ST	CITY OF MANCHESTER-BY-THE-SEA
MARLBOROUGH/MOWRY BROOK CUL	CITY OF MARLBOROUGH
MEDFORD/4000 MYSTIC/40B REV	CITY OF MEDFORD
QUINCY/188-200/PEER REVIEW	CITY OF QUINCY
QUINCY-PEER REV-17 BENNETT LN	CITY OF QUINCY
QUINCY/59 BICKNELL/PEER REV	CITY OF QUINCY
SALEM/NORTH ST CONNECTOR	CITY OF SALEM
SOMERVILLE/FY22 PAVEMENT ASSMT	CITY OF SOMERVILLE, MA
SOMERVILLE/FY24 TUFTS ST	CITY OF SOMERVILLE, MA
CHA/BOSTON,MA/MAFFA BRIDGE	CLOUGH HARBOUR & ASSOCIATES LLP
CHFA/REPORT REVIEW/NOTTI	CT HOUSING FINANCE AUTHORITY
CHFA/REPORT REVIEW/WALL ST	CT HOUSING FINANCE AUTHORITY
CHFA/WEST HARTFOD/THE ELLE	CT HOUSING FINANCE AUTHORITY
MHD/102971/#2/METHUEN, MA	DEPARTMENT OF HIGHWAY MASSACHUSETTS
MHD/100890/#3/FALL RVR-WESTPRT	DEPARTMENT OF HIGHWAY MASSACHUSETTS
MHD/82866/#31/GENERAL LSP SVCS	DEPARTMENT OF HIGHWAY MASSACHUSETTS
MHD/102971/#3/MIDDLESEX TRNPK	DEPARTMENT OF HIGHWAY MASSACHUSETTS
MHD/102971/#4/DRP	DEPARTMENT OF HIGHWAY MASSACHUSETTS
MHD/76805/#31/SEDIMENT STUDY	DEPARTMENT OF HIGHWAY MASSACHUSETTS
MHD/100890/#4/I-190WORC-LEO	DEPARTMENT OF HIGHWAY MASSACHUSETTS
MHD/82866/#33/FORMER CHABOT	DEPARTMENT OF HIGHWAY MASSACHUSETTS
100890/#5/I-95/READING	DEPARTMENT OF HIGHWAY MASSACHUSETTS
100890/#6/I-84 STURBRIDGE	DEPARTMENT OF HIGHWAY MASSACHUSETTS
MHD/111095/#1/TECH SUPPORT	DEPARTMENT OF HIGHWAY MASSACHUSETTS
MHD/111095/#2/NLEB SUPPORT	DEPARTMENT OF HIGHWAY MASSACHUSETTS
MHD/111095/#3/RPBB SUPPORT	DEPARTMENT OF HIGHWAY MASSACHUSETTS
100890/#7/I-84/HOLLAND-STURBRG	DEPARTMENT OF HIGHWAY MASSACHUSETTS
MHD/102430/#12/ENV PLAN REV	DEPARTMENT OF HIGHWAY MASSACHUSETTS
MHD/110250/#1/TTCP DRAWING	DEPARTMENT OF HIGHWAY MASSACHUSETTS
76805/#34/IDDE PRGM	DEPARTMENT OF HIGHWAY MASSACHUSETTS
MHD/77884/#23/COMPOST USE	DEPARTMENT OF HIGHWAY MASSACHUSETTS
100890/#8/RT25/WAREHAM-BOURNE	DEPARTMENT OF HIGHWAY MASSACHUSETTS
MHD/77884/#24/WAREHAM	DEPARTMENT OF HIGHWAY MASSACHUSETTS



## Tetra Tech Infrastructure Northeast (INE)

### Representative Project List - Public Agencies - Last 5+ years

MHD/82866/#37/RT 146	DEPARTMENT OF HIGHWAY MASSACHUSETTS
76805/#35/DRAINAGE MAPPING	DEPARTMENT OF HIGHWAY MASSACHUSETTS
76805/#36/MYCOFILTRATION	DEPARTMENT OF HIGHWAY MASSACHUSETTS
MHD/102971/#5/I-495&I-90	DEPARTMENT OF HIGHWAY MASSACHUSETTS
MHD/114019/#1/DARMOOUTH-RAYNHAM	DEPARTMENT OF HIGHWAY MASSACHUSETTS
MHD/111095/#5/CHP 91 DEP	DEPARTMENT OF HIGHWAY MASSACHUSETTS
MHD/111095/#6/SWPPP REVIEW	DEPARTMENT OF HIGHWAY MASSACHUSETTS
MHD/111095/#4/KINGSTON HEADWAL	DEPARTMENT OF HIGHWAY MASSACHUSETTS
MHD/115796/#1/SPRINGFIELD	DEPARTMENT OF HIGHWAY MASSACHUSETTS
MHD/115796/#2/WAREHAM	DEPARTMENT OF HIGHWAY MASSACHUSETTS
MHD/115796/#5/BROCKTON CPS	DEPARTMENT OF HIGHWAY MASSACHUSETTS
MHD/115796/#6/LEOMINSTER CPS	DEPARTMENT OF HIGHWAY MASSACHUSETTS
MHD/115796/#8/ACTON ROUTE 2	DEPARTMENT OF HIGHWAY MASSACHUSETTS
MHD/115796/#7/WAREHAM PHASE 1	DEPARTMENT OF HIGHWAY MASSACHUSETTS
MHD/115796/#10/ALLSTON PRESERV	DEPARTMENT OF HIGHWAY MASSACHUSETTS
MHD/115796/#3/COMPOST USE	DEPARTMENT OF HIGHWAY MASSACHUSETTS
MHD/115796/#4/ROUTE 18 CPS	DEPARTMENT OF HIGHWAY MASSACHUSETTS
MHD/115796/#9/ALLSTON MULTI	DEPARTMENT OF HIGHWAY MASSACHUSETTS
MHD/114019/#2/PLYMTH-BRAINTREE	DEPARTMENT OF HIGHWAY MASSACHUSETTS
MHD/82866/#36/RT 122/32 BARRE	DEPARTMENT OF HIGHWAY MASSACHUSETTS
MHD/102430/#16/MCP	DEPARTMENT OF HIGHWAY MASSACHUSETTS
MHD/115796/#12/CHARLTON	DEPARTMENT OF HIGHWAY MASSACHUSETTS
MHD/82866/#38/TOBIN BRIDGE	DEPARTMENT OF HIGHWAY MASSACHUSETTS
MHD/115796/#13/WELLESLEY	DEPARTMENT OF HIGHWAY MASSACHUSETTS
MHD/111095/#7/SEDIMENT STUDY	DEPARTMENT OF HIGHWAY MASSACHUSETTS
MHD/111095/#9/STORMWATER TECH	DEPARTMENT OF HIGHWAY MASSACHUSETTS
MHD/111095/#8/SWCA NLEB	DEPARTMENT OF HIGHWAY MASSACHUSETTS
MHD/110250/#3/TTC CONS STD	DEPARTMENT OF HIGHWAY MASSACHUSETTS
MHD/115796/#14/BERNARDSTON	DEPARTMENT OF HIGHWAY MASSACHUSETTS
MHD/102430/#17/CHICOPEE WASTE	DEPARTMENT OF HIGHWAY MASSACHUSETTS
MHD/110250/#4/BREAKDOWN LANE	DEPARTMENT OF HIGHWAY MASSACHUSETTS
MHD/110250/#5/ICE STAGE 1	DEPARTMENT OF HIGHWAY MASSACHUSETTS
MHD/102971/#6/RT18 PERMIT CLOS	DEPARTMENT OF HIGHWAY MASSACHUSETTS
MHD/111095/#10/DISTRICT# 2 ENV	DEPARTMENT OF HIGHWAY MASSACHUSETTS
MHD/111095/#11/N.ATTLBR CULVRT	DEPARTMENT OF HIGHWAY MASSACHUSETTS
MHD/111095/#12/HUBBARDSTON	DEPARTMENT OF HIGHWAY MASSACHUSETTS
MHD/102430/#19/ORANGE,MA	DEPARTMENT OF HIGHWAY MASSACHUSETTS
MHD/102430/#20/WESTFIELD,MA	DEPARTMENT OF HIGHWAY MASSACHUSETTS
MHD/110250/#6/SCITUATE ICE 1&2	DEPARTMENT OF HIGHWAY MASSACHUSETTS
MHD/102430/#21/REVERE DRUMS	DEPARTMENT OF HIGHWAY MASSACHUSETTS
MHD/114019/#3/RT 213 METHUEN	DEPARTMENT OF HIGHWAY MASSACHUSETTS
MHD/115796/#15/DEERFIELD	DEPARTMENT OF HIGHWAY MASSACHUSETTS
MHD/102971/#7/NRS SUPPORT	DEPARTMENT OF HIGHWAY MASSACHUSETTS
GEI-MWRA-METRO WATER TUNNEL	GEI CONSULTANTS
HNTB/CAPECOD CANAL BRIDGE	HNTB CORPORATION
JACOBS/MBTA LONGFELLOW VIADUCT	JACOBS ENGINEERING GROUP INC
JACOBS/NEWTON,MA/NEWTON WESTON	JACOBS ENGINEERING GROUP INC
MVY AIRPORT/W.TISBURY TANK SRV	MARTHA'S VINEYARD AIRPORT COMMISSION
MVY AIRPORT/PFAS FY2025	MARTHA'S VINEYARD AIRPORT COMMISSION
MVC/OAK BLUFFS,MA/PFAS	MARTHA'S VINEYARD COMMISSION
MCCA/BOSTON/BCEC GEN CIV ENG	MASSACHUSETTS CONVENTION CENTER AUTHORITY



## Tetra Tech Infrastructure Northeast (INE)

### Representative Project List - Public Agencies - Last 5+ years

SSA/2023 ENV SERVICES	MASSACHUSETTS STEAMSHIP AUTHORITY
SSA/2024 ENV SERVICES	MASSACHUSETTS STEAMSHIP AUTHORITY
MEDFIELD/CC 26-30 MILLBROOK RD	MEDFIELD (MA), TOWN OF
MEDFIELD/BOH GARRISON PATH	MEDFIELD (MA), TOWN OF
MEDFIELD/BOH 6 WILLOW CIR REV	MEDFIELD (MA), TOWN OF
MEDFIELD/BOH HINKLEY PAYGRND	MEDFIELD (MA), TOWN OF
MEDFIELD/BOH MEM SCHL SLR REV	MEDFIELD (MA), TOWN OF
MEDFIELD/ZBA 441 MAIN ST 40B	MEDFIELD (MA), TOWN OF
NITSCH/M483-D1/BOSTON, MA	NITSCH ENGINEERING INC
RI DOT/SCP FEASIBILITY/DESIGN	RHODE ISLAND DEPARTMENT OF TRANSPORTATION
RIDOT/2024 NLEB ACOUSTIC SRVYS	RHODE ISLAND DEPARTMENT OF TRANSPORTATION
RIDOT/2024 NLEB VISUAL BRIDGE	RHODE ISLAND DEPARTMENT OF TRANSPORTATION
SCAPE/BPDA DOWNTOWN WATERFRONT	SCAPE LANDSCAPE ARCHITECTURE DPC
ARLINGTON/1021-1025 MASS/40B	TOWN OF ARLINGTON, MA
FPA/HYANNIS HARBOR MVP RES PLN	TOWN OF BARNSTABLE, MA
BEDFORD/PFAS CONSULTING SRVC	TOWN OF BEDFORD
BLACKSTONE/BLACKSTONE ST SOLAR	TOWN OF BLACKSTONE
BLACKSTONE/PB 307 BLACKSTONE	TOWN OF BLACKSTONE
BLACKSTONE/PB HILL-FED ST REV	TOWN OF BLACKSTONE
PB 142 BLACKSTONE ST SW REV	TOWN OF BLACKSTONE
BLACKSTONE/PB SW BYLAW REV	TOWN OF BLACKSTONE
DOVER-RED ROBIN-DOVER MA	TOWN OF DOVER
DOVER/TROUT BROOK/PEER REVIEW	TOWN OF DOVER
HINGHAM/30 SUMMER/ESA	TOWN OF HINGHAM
HINGHAM/335 LINCOLN/ASB CONS	TOWN OF HINGHAM
HINGHAM/335 LINCOLN/SOIL	TOWN OF HINGHAM
MBTS/SANCTUARY 40B APPEAL SUPP	TOWN OF MANCHESTER BY THE SEA
MEDWAY/ZBA 39 MAIN ST	TOWN OF MEDWAY
MEDWAY/PEDB 20 BROAD STREET	TOWN OF MEDWAY
MEDWAY/PEDB/42 HIGHLAND ST	TOWN OF MEDWAY
MEDWAY/PEDB/MEDWAY PLAZA	TOWN OF MEDWAY
MEDWAY/PEDB MEDWAY MIL	TOWN OF MEDWAY
MEDWAY/ZBA TIMBERCREST CA	TOWN OF MEDWAY
MEDWAY/PEDB EVERSOURCE STA 65	TOWN OF MEDWAY
MEDWAY/DPW/CASSIDY FIELD	TOWN OF MEDWAY
MEDWAY/PEDB 2 MARC RD MOD	TOWN OF MEDWAY
MEDWAY/ZBA/GBW PHASE II	TOWN OF MEDWAY
MEDWAY/PEDB BOUNDARY LANE	TOWN OF MEDWAY
MEDWAY/PEDB 39 ALDER ST REV	TOWN OF MEDWAY
MEDWAY/120 MAIN MCP 2024	TOWN OF MEDWAY
MEDWAY/PEDB 56 SUMMER/PEER	TOWN OF MEDWAY
MEDWAY/CC 39 ALDER ST REV	TOWN OF MEDWAY
MEDWAY/CC 56 SUMMER ST REV	TOWN OF MEDWAY
MEDWAY/CC WILLOWS-WPC SW REV	TOWN OF MEDWAY
MEDWAY/CC 1 NIRVANA WAY REV	TOWN OF MEDWAY
MEDWAY/DPW ADAMS ST CULV	TOWN OF MEDWAY
MEDWAY DPW/HS CULVERT DES	TOWN OF MEDWAY
MEDWAY/PEDB 37 HOLLISTON REV	TOWN OF MEDWAY
MEDWAY/CC 149A HOLLISTON ST	TOWN OF MEDWAY
MEDWAY/PEDB SPERONI ACRES	TOWN OF MEDWAY
MEDWAY/PEDB HILL VIEW EST BOND	TOWN OF MEDWAY



## Tetra Tech Infrastructure Northeast (INE)

### Representative Project List - Public Agencies - Last 5+ years

MEDWAY/120 MAIN MCP 2025	TOWN OF MEDWAY
MEDWAY/CC 14 PUDDINGSTONE LN	TOWN OF MEDWAY
MILTON ZBA/ICEHOUSE/485-487	TOWN OF MILTON
MILTON/REGULATION UPDATES	TOWN OF MILTON
MILTON/107 HIGHLAND/PB PEER	TOWN OF MILTON
MILTON/111 HIGHLAND/CONCOM	TOWN OF MILTON
MILTON/LOWER GILE RD FIELD	TOWN OF MILTON
NORFOLK-LAKELAND HILLS	TOWN OF NORFOLK
NORTHBRIDGE/LELAND/DRAIN STDY	TOWN OF NORTHBRIDGE
SAUGUS PB/860 BROADWAY	TOWN OF SAUGUS - ZBA
SAUGUS PB/ESSEX LANDING	TOWN OF SAUGUS - ZBA
SAUGUS/PB 799 BROADWAY REV	TOWN OF SAUGUS - ZBA
SHERBORN/ZBA/FARM RD HOMES REV	TOWN OF SHERBORN
SHERBORN/ZBA WASH ST HOMES REV	TOWN OF SHERBORN
WALPOLE/ZBA/DUPEE ST 40B	TOWN OF WALPOLE
WALPOLE/BURNS AVE/40B REVIEW	TOWN OF WALPOLE
WALPOLE/NEPONSET VILLAGE	TOWN OF WALPOLE
WALPOLE/EAST ST/GILMORE 40B	TOWN OF WALPOLE
WALPOLE/DARWIN COMMONS/PEER	TOWN OF WALPOLE
WAYLAND/ANN'S SR VILLAGE/PEER	TOWN OF WAYLAND
WAYLAND CC/ST ANNS/PEER REV	TOWN OF WAYLAND
WAYLAND BOH/VERITAS/PEER REV	TOWN OF WAYLAND
WAYLAND BOH/ST ANNS/PEER REV	TOWN OF WAYLAND
WESTMINSTER/198 NARROWS RD/CA	TOWN OF WESTMINSTER
WESTMINSTER/OVERLOOK/SOLAR CA	TOWN OF WESTMINSTER
WESTMINSTER/150 STATE RD/PEER	TOWN OF WESTMINSTER
WESTMINSTER/PARK MEADOW/REVIEW	TOWN OF WESTMINSTER
WESTMINSTER/5 E MAIN ST/REVIEW	TOWN OF WESTMINSTER
WESTMINSTER/PB 97A MAIN ST CA	TOWN OF WESTMINSTER
WESTMINSTER/PB SR HOUSING CA	TOWN OF WESTMINSTER
WESTMINSTER/PB 84 FITCHBURG RD	TOWN OF WESTMINSTER
WESTMINSTER/PB KNOWER RD REV	TOWN OF WESTMINSTER
WESTMINSTER/PB 150 STATE RD CA	TOWN OF WESTMINSTER
WESTMINSTER/PB WBP LOT I-7 CA	TOWN OF WESTMINSTER
WESTMINSTER/PB PARK MEADOW CA	TOWN OF WESTMINSTER
CITY OF GLOUCESTER HARBOR PLAN	UTILE INC
UTILE/LYNN SOUTH HARBOR	UTILE INC
WATERTOWN/AMEND #2	WATERTOWN DPW
ASSABET VALLEY SCHL/UST SVCES	ASSABET VALLEY REGIONAL TECHNICAL HIGH SCHOOL
ASSABET VALLEY HS/UST SERVICES	ASSABET VALLEY REGIONAL TECHNICAL HIGH SCHOOL
ASSABET VALLEY HS/2021 UST	ASSABET VALLEY REGIONAL TECHNICAL HIGH SCHOOL
ASSABET VALLEY HS/2022 UST	ASSABET VALLEY REGIONAL TECHNICAL HIGH SCHOOL
BETHEL/SODIUM CHLORIDE-WELL	BETHEL HEALTH DEPARTMENT
BTD/49317/WO FY2020-01/STH-END	BOSTON TRANSPORTATION DEPARTMENT
BTD/49317/WO FY2020/ST BOSTON	BOSTON TRANSPORTATION DEPARTMENT
BTD/49317/WO FY2020-02/W ROX	BOSTON TRANSPORTATION DEPARTMENT
BTD/49317/FY2021-01/MASS AVE	BOSTON TRANSPORTATION DEPARTMENT
BTD/49317/FY2021-01/DORCHSTR	BOSTON TRANSPORTATION DEPARTMENT
BTD/49317/FY2021-02/VARIOUS	BOSTON TRANSPORTATION DEPARTMENT
BTD/49317/FY2021-03/W ROXBURY	BOSTON TRANSPORTATION DEPARTMENT
BTD/49317/FY2021-02/PED SAFETY	BOSTON TRANSPORTATION DEPARTMENT



## Tetra Tech Infrastructure Northeast (INE)

### Representative Project List - Public Agencies - Last 5+ years

BTD/49317/FY2021-03/PED SAFETY	BOSTON TRANSPORTATION DEPARTMENT
BTD/49317/FY2022-02P/BOSTON	BOSTON TRANSPORTATION DEPARTMENT
BTD/49317/FY2022-01P/BOSTON	BOSTON TRANSPORTATION DEPARTMENT
BTD/49317/FY2022-03P/BOSTON	BOSTON TRANSPORTATION DEPARTMENT
BTD/49317/FY2022-01S/BOSTON	BOSTON TRANSPORTATION DEPARTMENT
BTD/49317/FY2022-02S/BOSTON	BOSTON TRANSPORTATION DEPARTMENT
BTD/49317/FY2022-04S/BOSTON	BOSTON TRANSPORTATION DEPARTMENT
BTD/49317/FY2022-04P/BOSTON	BOSTON TRANSPORTATION DEPARTMENT
BTD/49317/FY2022-05P/BOSTON	BOSTON TRANSPORTATION DEPARTMENT
BTD/49317/FY2023-01P/SIGNAL-OP	BOSTON TRANSPORTATION DEPARTMENT
BTD/49317/FY2023-02P/SIGNAL-OP	BOSTON TRANSPORTATION DEPARTMENT
BTD/49317/FY2023-04P/SIGNAL-OP	BOSTON TRANSPORTATION DEPARTMENT
BWSC/STRATEGIC PLNG FOR GRANT	BOSTON WATER AND SEWER COMMISSION
FPA/SQUANTUM POINT	CAMBRIDGE SEVEN ASSOCIATES, INC
CRPCD/Salmon Health CIPP CPS	CHARLES RIVER POLLUTION CONTROL DISTRICT
CRPCD/SEPTIC HLDNG TNK YRD/CS	CHARLES RIVER POLLUTION CONTROL DISTRICT
CRPCD/CIPP LINING AT ELM ST	CHARLES RIVER POLLUTION CONTROL DISTRICT
FPA/BEVERLY WATER ST PUMP ST	CITY OF BEVERLY, MA
BEVERLY/MS4 SUPPORT-YEAR 3	CITY OF BEVERLY, MA
BEVERLY/MS4 SUPPORT-YEAR 4	CITY OF BEVERLY, MA
BEVERLY/NATIONAL GRID 115KV	CITY OF BEVERLY, MA
FPA/BASS RIVER MVP GRANT	CITY OF BEVERLY, MA
FPA/CITY OF BEVERLY/BASS RIVER	CITY OF BEVERLY, MA
ISLAND END RIVER MVP-CHELSEA	CITY OF CHELSEA
FPA/ISLAND END RIVER MVP FLOOD	CITY OF CHELSEA
FPA/CITY OF EVERETT	CITY OF EVERETT PUBLIC WORKS
FPA/IER FLOOD RESILIENCE PROJ	CITY OF EVERETT PUBLIC WORKS
FPA/IER FLOOD RESILIENCE GRANT	CITY OF EVERETT PUBLIC WORKS
GLOUCESTER/GREEN ST PARK IMPRV	CITY OF GLOUCESTER, MA
LYNN/WHEELER/PLEASANT PED	CITY OF LYNN MA
MANCHESTER BY SEA/SEASIDE NO.1	CITY OF MANCHESTER-BY-THE-SEA
MANCHESTER BY SEA-DPW SITING	CITY OF MANCHESTER-BY-THE-SEA
NEWBURYPORT/TRAFFIC FLOW STDY	CITY OF NEWBURYPORT
QUINCY/29-39 NEWCOMB ST	CITY OF QUINCY
QUINCY/PEER REVIEW 2019-12	CITY OF QUINCY
QUINCY/172 SOUTH/PEER REVIEW	CITY OF QUINCY
QUINCY/503-511R/PEER REVIEW	CITY OF QUINCY
QUINCY/SEA ST/VALVE DESIGN	CITY OF QUINCY
QUINCY/MANET SEA WALL/PHASE 1	CITY OF QUINCY
QUINCY/PEER/95-109 FRANKLIN ST	CITY OF QUINCY
SALEM/FOOTPRINT WTR MTR REVIEW	CITY OF SALEM
SALEM/DRONE SURVEY	CITY OF SALEM
SALEM/WATER METER INSPECTION	CITY OF SALEM
SOMERVILLE/CY CLARENDON HILL	CITY OF SOMERVILLE, MA
SOMERVILLE-PAVEMENT & SIDEWALK	CITY OF SOMERVILLE, MA
SOMERVILLE/PEARL ST & SELECT	CITY OF SOMERVILLE, MA
SOMERVILLE/PEARL ST/TRAFF CALM	CITY OF SOMERVILLE, MA
SOMERVILLE/FY21 PAVEMENT & SW	CITY OF SOMERVILLE, MA
SOMERVILLE/WESTERN WASHINGTON	CITY OF SOMERVILLE, MA
CHA/BOSTON,MA/MAFFA PRE-BID	CLOUGH HARBOUR & ASSOCIATES LLP
CC/CAMPUS WIDE SURVEY & MAP	CONNECTICUT COLLEGE



## Tetra Tech Infrastructure Northeast (INE)

### Representative Project List - Public Agencies - Last 5+ years

CHFA CLOVER GARDENS	CT HOUSING FINANCE AUTHORITY
REPORT REVIEW-434 MAPLEWOOD	CT HOUSING FINANCE AUTHORITY
MAPLEVIEW TOWERS REPORT REVIEW	CT HOUSING FINANCE AUTHORITY
CHFA-REPORT REVIEW/SITE VISIT	CT HOUSING FINANCE AUTHORITY
CHFA/REPORT REVIEW, MLK APTS	CT HOUSING FINANCE AUTHORITY
MHD/76805/#30/ROUTE 28	DEPARTMENT OF HIGHWAY MASSACHUSETTS
MHD/82866/#24/GENERAL LSP SVCS	DEPARTMENT OF HIGHWAY MASSACHUSETTS
MHD/102430/#9/GREENFIELD, MA	DEPARTMENT OF HIGHWAY MASSACHUSETTS
MHD/76805/#32/RT 111 CULVERT	DEPARTMENT OF HIGHWAY MASSACHUSETTS
76805/#33/STRMWTR IMPRVMT RT6	DEPARTMENT OF HIGHWAY MASSACHUSETTS
MHD/82866/#35/HASP COVID-19	DEPARTMENT OF HIGHWAY MASSACHUSETTS
FPA/GLOUCESTER DMF	DIVISION OF MARINE FISHERIES
EDGARTOWN/PFAS SAMPLING	EDGARTOWN WATER DEPARTMENT
FRANKLIN FOOD PANTRY/TRAFFIC	FRANKLIN FOOD PANTRY
FRANKLIN FOOD PANTRY/ENG SRVCS	FRANKLIN FOOD PANTRY
FRANKLIN FOODPANTRY/W CENTRAL	FRANKLIN FOOD PANTRY
GILL-190 ACCELER 8	GILL ENGINEERING ASSOCIATES INC
GILL-190-ACCELER-PRE-BID	GILL ENGINEERING ASSOCIATES INC
JACOBS-MBTA LONGFELLOW VIADUCT	JACOBS ENGINEERING GROUP INC
JACOBS/NEWTON WESTON/PRE-BID	JACOBS ENGINEERING GROUP INC
MVY AIRPORT MCP - AFFF	MARTHA'S VINEYARD AIRPORT COMMISSION
MVY AIRPORT MCP/AFFF FY2020	MARTHA'S VINEYARD AIRPORT COMMISSION
MVY AIRPORT/AFFF MGMNT	MARTHA'S VINEYARD AIRPORT COMMISSION
MVY AIRPORT/OIL SPILL	MARTHA'S VINEYARD AIRPORT COMMISSION
MVY AIRPORT/AFFF FY2021	MARTHA'S VINEYARD AIRPORT COMMISSION
MVY AIRPORT/GEN CONSULTING	MARTHA'S VINEYARD AIRPORT COMMISSION
MVY AIRPORT/PFAS FY2022	MARTHA'S VINEYARD AIRPORT COMMISSION
MVY AIRPORT/PFAS FY2023	MARTHA'S VINEYARD AIRPORT COMMISSION
MVY AIRPORT/PFAS COLLOIDAL	MARTHA'S VINEYARD AIRPORT COMMISSION
MVY AIRPORT/HADLEY HAZ BLDG	MARTHA'S VINEYARD AIRPORT COMMISSION
MVY AIRPORT/PFAS FY2024	MARTHA'S VINEYARD AIRPORT COMMISSION
MVY AIRPORT/HADLEY ASBESTOS	MARTHA'S VINEYARD AIRPORT COMMISSION
MVY AIRPORT/AST UST REVIEW	MARTHA'S VINEYARD AIRPORT COMMISSION
MVRHS ATHLETIC FIELDS TESTING	MARTHA'S VINEYARD COMMISSION
MCCA/OMNI & BOYLSTON REVIEW	MASSACHUSETTS CONVENTION CENTER AUTHORITY
MCCA/BOSTON/VERTICAL CORE SITE	MASSACHUSETTS CONVENTION CENTER AUTHORITY
MCCA/BOSTON/BCEC TRAFFIC	MASSACHUSETTS CONVENTION CENTER AUTHORITY
MIT/CUP LEAD TESTING	MASSACHUSETTS INSTITUTE OF TECHNOLOGY
MIT/CUP ASBESTOS SAMPLING	MASSACHUSETTS INSTITUTE OF TECHNOLOGY
STEAMSHIP AUTH/2020 ENV SVS	MASSACHUSETTS STEAMSHIP AUTHORITY
STEAMSHIP AUTH/2021 ENV SVCS	MASSACHUSETTS STEAMSHIP AUTHORITY
SSA/2022 LSP SERVICES	MASSACHUSETTS STEAMSHIP AUTHORITY
SSA/2022 ENV SERVICES	MASSACHUSETTS STEAMSHIP AUTHORITY
MEDFIELD/ZBA AURA	MEDFIELD (MA), TOWN OF
MEDFIELD/PB CLARK TAVERN	MEDFIELD (MA), TOWN OF
MEDFIELD/PB KINGSBURY CLUB	MEDFIELD (MA), TOWN OF
MEDFIELD/ZBA HINKLEY SOUTH	MEDFIELD (MA), TOWN OF
MEDFIELD/BOH 230 MAIN ST	MEDFIELD (MA), TOWN OF
MEDFIELD/PB ZBA 230 MAIN ST	MEDFIELD (MA), TOWN OF
MEDFIELD/CC 230 MAIN ST	MEDFIELD (MA), TOWN OF
MEDFIELD/BOH 340 MAIN ST	MEDFIELD (MA), TOWN OF



## Tetra Tech Infrastructure Northeast (INE)

### Representative Project List - Public Agencies - Last 5+ years

MEDFIELD/ZBA 16 WEST MILL ST	MEDFIELD (MA), TOWN OF
MEDFIELD/ZBA 65 SOUTH STREET	MEDFIELD (MA), TOWN OF
MEDFIELD/BOH 40-42 PARK ST	MEDFIELD (MA), TOWN OF
MEDFIELD/BOH 91 SPRING ST	MEDFIELD (MA), TOWN OF
MEDFIELD/BOH KC SPLASH PAD	MEDFIELD (MA), TOWN OF
MEDFIELD/BOH KC PLATFORM CRTS	MEDFIELD (MA), TOWN OF
NEW HARTFORD MEMORIAL LIBRARY	NEW HARTFORD MEMORIAL LIBRARY, INC
N HARTFORD LIBRARY/UST REMOVAL	NEW HARTFORD MEMORIAL LIBRARY, INC
RIDOT/KICKEMUIT/HOPE/SAKONNET	RHODE ISLAND DEPARTMENT OF TRANSPORTATION
RIDOT/NLB PLAN DEV & SURVEY	RHODE ISLAND DEPARTMENT OF TRANSPORTATION
RIDOT/NLEB PLAN/SURVEY	RHODE ISLAND DEPARTMENT OF TRANSPORTATION
RIDOT/NLEB PLAN DEV & SURVEY	RHODE ISLAND DEPARTMENT OF TRANSPORTATION
SALEM STATE/ANNUAL MON SRVCS	SALEM STATE COLLEGE
SSU/FY2020-21 ANNUAL MON SRVCS	SALEM STATE COLLEGE
SSU/FY2021-22 ANNUAL MON SRVC	SALEM STATE COLLEGE
SSU/FY2022-23 ANNUAL MON SRVC	SALEM STATE COLLEGE
SSU/FY2023-24 ANNUAL MON SRVC	SALEM STATE COLLEGE
SGH/BCG HIGH ROOF WTRPROOFING	SIMPSON GUMPERTZ & HEGER INC
SRA/ROUTE 18 SEWER REVIEW	SOUTHFIELD REDEVELOPMENT AUTHORITY
LWSC Phase 2 Design	STANTEC
STV/GLX/MBTA/EXTRA WORK	STV, INC.
ABINGTON/ALTA PEER REVIEW	TOWN OF ABINGTON - ZONING BOARD OF APPEALS
ARLINGTON/10 SUNNYSIDE AVE/40B	TOWN OF ARLINGTON, MA
BEDFORD/PFAS CONSULTING	TOWN OF BEDFORD
BLACKSTONE/BITTERSWEET MEADOWS	TOWN OF BLACKSTONE
BLACKSTONE/BUTLER ST APTS	TOWN OF BLACKSTONE
BLACKSTONE/110R BLACKSTONE ST	TOWN OF BLACKSTONE
BLACKSTONE/PB 298 BLACKSTONE	TOWN OF BLACKSTONE
BLACKSTONE/PB PICKERING ESTATE	TOWN OF BLACKSTONE
BLACKSTONE/PB PYNE S & S	TOWN OF BLACKSTONE
TOWN OF CHARLTON/LNG FACILITY	TOWN OF CHARLTON, MA
TOWN OF COHASSET-SOHIER ST SW	TOWN OF COHASSET
DOVER ZBA/RED ROBIN 40B	TOWN OF DOVER
FRANKLIN-W&S ROOF DESIGN	TOWN OF FRANKLIN
HINGHAM/SUMMER ST SEAWALL	TOWN OF HINGHAM
HINGHAM/VETERAN'S PARK	TOWN OF HINGHAM
HINGHAM/VETERAN'S PARK/PHASE I	TOWN OF HINGHAM
HINGHAM/HERSEY ST/MCP	TOWN OF HINGHAM
HINGHAM/96 CENTRAL ST/ESA	TOWN OF HINGHAM
HINGHAM/12 SUMMER/ESA	TOWN OF HINGHAM
HOLLISTON/PB CONSTITUTION	TOWN OF HOLLISTON
HOLLISTON/PB CONST VILLAGE	TOWN OF HOLLISTON
GRAFTON/UPTON RR/PLANNING SUPP	TOWN OF HOPEDALE
IPSWICH/HIGH & CENTRAL/TRAFFIC	TOWN OF IPSWICH MA DEPARTMENT OF PUBLIC WORKS
IPSWICH/MILLS DAM INSPECTION	TOWN OF IPSWICH MA DEPARTMENT OF PUBLIC WORKS
IPSWICH/RR CROSSING COUNTS	TOWN OF IPSWICH MA DEPARTMENT OF PUBLIC WORKS
MEDWAY/DPS VILLAGE ST TRAFFIC	TOWN OF MEDWAY
MEDWAY/DPS WALKER ST BRIDGE	TOWN OF MEDWAY
MEDWAY/DPS WINTER ST DRAINAGE	TOWN OF MEDWAY
MEDWAY/DPS CHOATE DAM EAP	TOWN OF MEDWAY
MEDWAY/CC 39 MAIN ST	TOWN OF MEDWAY



## Tetra Tech Infrastructure Northeast (INE)

### Representative Project List - Public Agencies - Last 5+ years

MEDWAY/4 MARC ROAD	TOWN OF MEDWAY
MEDWAY/WILLIAM WALLACE VILLAGE	TOWN OF MEDWAY
MEDWAY/CC 21 TROTTER DRIVE	TOWN OF MEDWAY
MEDWAY/CC WILLIAM WALLACE VILL	TOWN OF MEDWAY
MEDWAY/DPW CHESTNUT ST	TOWN OF MEDWAY
MEDWAY/4 MARC RD-MEDWAY	TOWN OF MEDWAY
MEDWAY/CC 4 MARC RD/SW REVIEW	TOWN OF MEDWAY
MEDWAY/21 TROTTER DRIVE	TOWN OF MEDWAY
MEDWAY/21 HIGH ST/ENG SVCS	TOWN OF MEDWAY
MEDWAY/CC EVERGREEN VILLAGE	TOWN OF MEDWAY
MEDWAY/PEDB EVERGREEN VILLAGE	TOWN OF MEDWAY
MEDWAY/EVERGREEN/DESIGN REVIEW	TOWN OF MEDWAY
MEDWAY/DPW FIRE SPRINKLERS	TOWN OF MEDWAY
MEDWAY/PEDB/2 MARC RD MOD	TOWN OF MEDWAY
MEDWAY/CC/42 HIGHLAND ST	TOWN OF MEDWAY
MEDWAY/CC 77-81 LOVERING	TOWN OF MEDWAY
MEDWAY/CC MEDWAY MILL	TOWN OF MEDWAY
MEDWAY/DPW MEDWAY PLAZA	TOWN OF MEDWAY
MEDWAY/CC MAIN-ELM	TOWN OF MEDWAY
MEDWAY/CC 14-16 FRANKLIN ST	TOWN OF MEDWAY
MEDWAY/CC TIMBER CREST CA	TOWN OF MEDWAY
MEDWAY/PEDB HARMONY VILLAGE	TOWN OF MEDWAY
MEDWAY/CC 158-160 HOLLISTON ST	TOWN OF MEDWAY
MEDWAY/DPW CHOATE DAM	TOWN OF MEDWAY
MEDWAY/CC THE SETTLEMENT	TOWN OF MEDWAY
MEDWAY/PEDB 149A HOLLISTON ST	TOWN OF MEDWAY
MEDWAY/PEDB ST JOSEPHS CHURCH	TOWN OF MEDWAY
MEDWAY/PEDB/THE SETTLEMENT	TOWN OF MEDWAY
MEDWAY/DPW TENNIS COURTS	TOWN OF MEDWAY
MEDWAY/DPW CENTER ST FIELD	TOWN OF MEDWAY
MEDWAY/DPW/WEST ST	TOWN OF MEDWAY
MEDWAY/BOUNDARY LANE	TOWN OF MEDWAY
MEDWAY/CC 6 INDUSTRIAL PARK RD	TOWN OF MEDWAY
MEDWAY/PEDB/6 INDUS PK RD	TOWN OF MEDWAY
MEDWAY/ROCKY'S ACE HARDWARE	TOWN OF MEDWAY
MEDWAY/MP'S HS GW INVSTG TN	TOWN OF MEDWAY
MEDWAY/PEDB HARTNEY ACRES	TOWN OF MEDWAY
MEDWAY/PEDB 10R OAK STREET	TOWN OF MEDWAY
MEDWAY/PEDB 56 SUMMER ST	TOWN OF MEDWAY
MEDWAY/PEDB WINGATE FARM MOD	TOWN OF MEDWAY
MEDWAY/PEDB 6 CUTLER ST	TOWN OF MEDWAY
MEDWAY/CC WATER TREAT PLANT	TOWN OF MEDWAY
MEDWAY/PEDB WTR TREAT PLNT	TOWN OF MEDWAY
MEDWAY/CC 69 SUMMER ST	TOWN OF MEDWAY
MEDWAY/DPW WEST ST IMPROVEMNT	TOWN OF MEDWAY
MEDWAY/PEDB 149 MAIN ST	TOWN OF MEDWAY
MEDWAY/MA/CC 49 ALDER ST	TOWN OF MEDWAY
MEDWAY/PEDB 288 VILLAGE ST	TOWN OF MEDWAY
MEDWAY/PEDB 86 HOLLISTON ST	TOWN OF MEDWAY
MEDWAY/DPW MAPLE ST CULVERT	TOWN OF MEDWAY
MEDWAY/120 MAIN ST/PEER REVIEW	TOWN OF MEDWAY



## Tetra Tech Infrastructure Northeast (INE)

### Representative Project List - Public Agencies - Last 5+ years

MEDWAY/CC 86 HOLLISTON STREET	TOWN OF MEDWAY
MEDWAY/CC 2 MARC RD MOD	TOWN OF MEDWAY
MEDWAY/PEDB MEDWAY GRID BESS	TOWN OF MEDWAY
MEDWAY/PEDB BRIGHT PATH CCC	TOWN OF MEDWAY
MEDWAY/PEDB 83 MAIN ST	TOWN OF MEDWAY
MEDWAY/PEDB 16 HOLLISTON ST	TOWN OF MEDWAY
MEDWAY/PEDB MED COMM TRAFFIC	TOWN OF MEDWAY
MEDWAY/DPW WINTHROP ST CULVERT	TOWN OF MEDWAY
MEDWAY/GRID SEIR	TOWN OF MEDWAY
MEDWAY/DPW/DOGWOOD LANE	TOWN OF MEDWAY
MEDWAY/DPW WEST ST CA	TOWN OF MEDWAY
MEDWAY/DPW/HS CULVERT	TOWN OF MEDWAY
MEDWAY/120 MAIN ST/PH I ESA	TOWN OF MEDWAY
MEDWAY/PEDB SITE PLANS REGS	TOWN OF MEDWAY
MEDWAY/120 MAIN ST ENV	TOWN OF MEDWAY
MEDWAY/PEDB CHIPOTLE-STARBUCKS	TOWN OF MEDWAY
MEDWAY/120 MAIN MCP 2023	TOWN OF MEDWAY
MEDWAY/PEDB 7 SANFORD ST	TOWN OF MEDWAY
MEDWAY/PEDB CHPTLE-STARBUCKS CA	TOWN OF MEDWAY
MEDWAY/CC 28 POND ST/PEER	TOWN OF MEDWAY
MEDWAY/CC 49 MILFORD ST REV	TOWN OF MEDWAY
MEDWAY/PEDB SW BYLAW-REG REV	TOWN OF MEDWAY
MEDWAY/CC 75 WINTHROP ST REV	TOWN OF MEDWAY
MEDWAY/PEDB SUBDIV REG UPDATE	TOWN OF MEDWAY
MEDWAY/DPW FISHER ST DRAIN	TOWN OF MEDWAY
MIDDLEBOROUGH/OAK POINT	TOWN OF MIDDLEBOROUGH
MILTON ZBA/4-24 FRANKLIN/PEER	TOWN OF MILTON
MILTON ZBA/648 CANTON AVE	TOWN OF MILTON
MILTON ZBA/582 BLUE HILL AVE	TOWN OF MILTON
MILTON ZBA/936 BRUSH HILL/PEER	TOWN OF MILTON
MILTON ZBA/728 RANDOLPH/PEER	TOWN OF MILTON
MILTON ZBA/16 AMOR RD/PEER	TOWN OF MILTON
MILTON-HIGHLAND MEMORY CARE	TOWN OF MILTON
NORFOLK/LAKELAND HILLS PEER	TOWN OF NORFOLK
NORWOOD/NHC PEER REVIEW	TOWN OF NORWOOD
NORWOOD/PROSPECT ST/PEER	TOWN OF NORWOOD
NORWOOD/973 UNIVERSITY/PEER	TOWN OF NORWOOD
NORWOOD/PROSPECT ST/PEER REV	TOWN OF NORWOOD
ROCKPORT/MA/DOCUMENT REVIEW	TOWN OF ROCKPORT, MA
SAUGUS/TOLL BROTHERS/SAUGUS	TOWN OF SAUGUS - ZBA
SAUGUS/1431 BROADWAY/PEER REV	TOWN OF SAUGUS - ZBA
SAUGUS/PB 1753 BROADWAY	TOWN OF SAUGUS - ZBA
SAUGUS/PB 180 CENTRAL ST/PEER	TOWN OF SAUGUS - ZBA
SAUGUS/PB 1639 BROADWAY REV	TOWN OF SAUGUS - ZBA
SHERBORN/COOLIDGE CROSSING	TOWN OF SHERBORN
SHERBORN/ZBA GREENWOOD HOMES	TOWN OF SHERBORN
STERLING APD REVIEW	TOWN OF STERLING
PLEASANT ST/SPG ST/STONEHAM/MA	TOWN OF STONEHAM
TOWN OF WALPOLE-ZBA-CEDAR CR	TOWN OF WALPOLE
WALPOLE ZBA-MOOSE HILL-40B REV	TOWN OF WALPOLE
WALPOLE/CEDAR EDGE PEER REVIEW	TOWN OF WALPOLE



## Tetra Tech Infrastructure Northeast (INE)

### Representative Project List - Public Agencies - Last 5+ years

WESTMINSTER/ELLIS ROAD SOLAR	TOWN OF WESTMINSTER
WESTMINSTER/ROWTIER DRIVE	TOWN OF WESTMINSTER
WESTMINSTER/DARBY-HARRIS RD	TOWN OF WESTMINSTER
WESTMINSTER/JORDAN LANE	TOWN OF WESTMINSTER
WESTMINSTER/SENIOR HOUSING	TOWN OF WESTMINSTER
WESTMINSTER/BLACKS POND LANE	TOWN OF WESTMINSTER
WESTMINSTER/198 NARROWS RD	TOWN OF WESTMINSTER
WESTMINSTER/STWTR WORKSHOP	TOWN OF WESTMINSTER
WESTMINSTER/BETTY JOE WAY	TOWN OF WESTMINSTER
WESTMINSTER/142 TURNPIKE ROAD	TOWN OF WESTMINSTER
WESTMINSTER/96 AUBUCHON DRIVE	TOWN OF WESTMINSTER
WESTMINSTER/O'CONNOR DRIVE CA	TOWN OF WESTMINSTER
WESTMINSTER/TANDEM DRIVE/CA	TOWN OF WESTMINSTER
WESTMINSTER/SIMPLEX DR	TOWN OF WESTMINSTER
WESTMINSTER/KIWI COURT	TOWN OF WESTMINSTER
WESTMINSTER/95 AUBUCHON DR	TOWN OF WESTMINSTER
WESTMINSTER/PORTER PAGE RD	TOWN OF WESTMINSTER
WESTMINSTER/SENIOR HOUSING MOD	TOWN OF WESTMINSTER
WESTMINSTER/JUMBO CAPITAL	TOWN OF WESTMINSTER
WESTMINSTER/MA/LOT I-8 EARTH	TOWN OF WESTMINSTER
WESTMINSTER/JORDAN LANE CA	TOWN OF WESTMINSTER
WESTMINSTER/NE SHEETS LLC	TOWN OF WESTMINSTER
WESTMINSTER/8 WORCESTER RD	TOWN OF WESTMINSTER
WESTMINSTER/WEATHERBEE LANE CA	TOWN OF WESTMINSTER
WESTMINSTER/LOT I-8 STE PLN MD	TOWN OF WESTMINSTER
WESTMINSTER/6 VILLAGE SOLAR	TOWN OF WESTMINSTER
WESTMINSTER/WBP LOT 1-7 MOD	TOWN OF WESTMINSTER
WESTMINSTER/97 MAIN ST	TOWN OF WESTMINSTER
WESTMINSTER/PROCTOR DR/CA	TOWN OF WESTMINSTER
WESTMINSTER/BETTY JOE WAY CA	TOWN OF WESTMINSTER
FPA/EVERETT INDUSTRIAL MP	UTILE INC
WATERTOWN DPW-MAIN ST PARKING	WATERTOWN DPW
WATERTOWN/HIGHLAND AVE DESIGN	WATERTOWN DPW
WATERTOWN/CHAPMAN ST DESIGN	WATERTOWN DPW
BTD/49317/FY2021-04/PED SAFETY	BOSTON TRANSPORTATION DEPARTMENT
BTD/49317/FY2022-03S/BOSTON	BOSTON TRANSPORTATION DEPARTMENT
BTD/49317/FY2023-05P/SIGNAL-OP	BOSTON TRANSPORTATION DEPARTMENT
BTD/61088/CO WO FY2023-02S	BOSTON TRANSPORTATION DEPARTMENT
BTD/61088/CO WO FY2023-01S	BOSTON TRANSPORTATION DEPARTMENT
MHD/82866/#23/WATER ST BRIDGE	DEPARTMENT OF HIGHWAY MASSACHUSETTS
MHD/82866/#25/BARRE, MA	DEPARTMENT OF HIGHWAY MASSACHUSETTS
MHD/82866/#30/ALLSTON, MA	DEPARTMENT OF HIGHWAY MASSACHUSETTS
MHD/102430/#10/ALLSTON MCP RA	DEPARTMENT OF HIGHWAY MASSACHUSETTS
MHD/82866/#26/WBVC CLOSEOUT	DEPARTMENT OF HIGHWAY MASSACHUSETTS
MHD/82866/#27/GAS N GO	DEPARTMENT OF HIGHWAY MASSACHUSETTS
MHD/82866/#28/BRIDGE 44	DEPARTMENT OF HIGHWAY MASSACHUSETTS
MHD/82866/#32/DESIGN & SPEC PR	DEPARTMENT OF HIGHWAY MASSACHUSETTS
MHD/82866/#29/FORMER TEXACO	DEPARTMENT OF HIGHWAY MASSACHUSETTS
MHD/102430/#11/LNAPL	DEPARTMENT OF HIGHWAY MASSACHUSETTS
MHD/102430/#13/ALLSTON MCP	DEPARTMENT OF HIGHWAY MASSACHUSETTS
MHD/110250/#2/PED SAFETY	DEPARTMENT OF HIGHWAY MASSACHUSETTS

**Brown, Richardson and Rowe Qualifying Projects List**  
New Bedford/Fairhaven Municipal Harbor Plan  
7/24/2024

Name and Location of Project	Description of Services	Date of NTP	Date of Completion	Name/Address of Owner	Estimated Costs		Role
					A/E	Construction	
Hyannis Harbor WVP Resilience Plan Hyannis, MA	Preparation of Hyannis Harbor Municipal Vulnerability Preparedness (WVP) Resilience Plan. Developed to identify flood risk vulnerabilities and other constraints, explore opportunities, and provide recommendations for land use improvements, climate resiliency, economic development strategies, and public space enhancements.	Mar-24	Jul-24	The Town of Barnstable Town Hall 357 Main Street Hyannis, MA 02601	\$54,280	N/A	Subconsultant to Tetra Tech, Inc.
Lynn Shoreline Restoration Lynn, MA	Development of a preliminary shoreline design that will improve the park's and shoreline's resiliency in the face of increased sea level rise and storm surges which have significantly eroded the future Harbor Park's coastal edge.	Jul-23	Ongoing	City of Lynn Planning Department City Hall, Room 306 Lynn, MA 01901	\$55,080	TBD	Prime
I-90 Allston Multimodal and Shoreline Restoration Allston, MA	Replacement of existing I-90 interchange in Allston to support mixed use development. BRR is developing plans for a new shared-use path and public park along the Charles River, as well as providing habitat restoration, enhancement, and establishment of native ecosystems while minimizing impact on the river.	Sep-22	Ongoing	MassDOT 10 Park Plaza Boston, MA 02116	\$110,789	TBD	Subconsultant to Tetra Tech, Inc.
Hyannis Harbor Master Plan Barnstable, MA	Preparation of the master plan and outline of future complimentary improvements that can be implemented over time.	Oct-21	Ongoing	The Town of Barnstable Town Hall 357 Main Street Hyannis, MA 02601	\$79,964	TBD	Subconsultant to Poth Infrastructure & Environment, LLC
Gloucester Municipal Harbor Plan Gloucester, MA	Supporting the design team by proposing site specific suggestions for improvements to public owned open space, waterfront pedestrian connections, and proposed resiliency measures.	May-21	2023	City of Gloucester 9 Dale Avenue Gloucester, MA 01930	\$15,103	N/A	Subconsultant to Utilite, Inc.
Lynn Harbor Park Lynn, MA	BRR is providing landscape architectural design services for the creation of a future waterfront landfill park.	Sep-20	Ongoing	MA Exec. Office of Energy & Environmental Affairs 100 Cambridge Street Boston, MA 02114	\$486,052	\$15,066,748	Prime
Providence Waterfront Park Providence, RI	BRR prepared the design and construction drawings and oversee the construction of Park for RI DOT. After RI DOT transferred ownership to the Redevelopment District, BRR, as the Landscape Architect of Record, was recently retained to assist with overseeing the completion of outstanding construction and landscape items.	Aug-20	2022	I-155 Redevelopment District 315 Iron Horse Way, Ste. 101 Providence, RI 02908	\$24,998	N/A	Prime
Salem Municipal Harbor Plan Salem, MA	Working closely with the design team and City to offer creative solutions that ensure the pedestrian access is prioritized along the harbor front and that proposed resiliency measures coexist with the many kind-based public goals such as connectivity, tourism, and enjoyment of the waterfront.	May-20	2021	City of Salem 93 Washington Street Salem, MA 02370	\$5,000	N/A	Subconsultant to Utilite, Inc.
Lynn Dredging Study Lynn, MA	Services related to potential dredging of Lynn Harbor.	Nov-19	2020	City of Lynn City Hall Lynn, MA 01901 William Bockley	\$4,382	N/A	Prime
Merrimack River Master Plan Methuen, MA	BRR provided landscape architectural and planning services for a Master Plan Study for Open Space and Improved Accessibility to the Merrimack River Waterfront in Methuen.	Mar-19	2019	City of Methuen Service Building 43 Pleasant Street Methuen, MA 02844	\$50,180	N/A	Prime
Lynn Waterfront Open Space Master Plan Lynn, MA	BRR prepared the WOSMP building upon extensive public feedback, locating a series of destinations along the waterfront for open space development and climate change mitigation opportunities.	Jul-17	2019	MA Exec. Office of Energy & Environmental Affairs 100 Cambridge Street Boston, MA 02114	\$312,654	N/A	Prime
Storrow Drive Consolidation Boston, MA	Assistance with the concept design for expanded Charles River parkland and streetscape improvements.	Aug-14	Ongoing	MassDOT 10 Park Plaza Boston, MA 02116	\$542,309	TBD	Subconsultant to Jacobs Engineering





**List of current/active clients in New Bedford / Fairhaven harbor**

Apex Companies, LLC (Foth is a subcontractor to Apex who is working with Foss Terminal)

Avangrid

BS Realty, LLC

Fairhaven Shipyard Companies

Mass Clean Energy Center

Mass Development

New Bedford Port Authority

Shoreline Offshore, LLC

Shoreline Resources, LLC

Store Capital (purchased 40 Herman Melville / Blue Harvest)

Town of Fairhaven



**Representative List of Martin Associates' Contracts for  
Public Agencies in Massachusetts**

<b>Project Name</b>	<b>Awarding Authority</b>	<b>Completion Date</b>
Economic Impact of Port of Boston	Massport	2019
Economic Impact of New Bedford/ Fairhaven Harbor	New Bedford Port Authority	2019
Economic Impact of Port of New Bedford	New Bedford Port Authority	2015



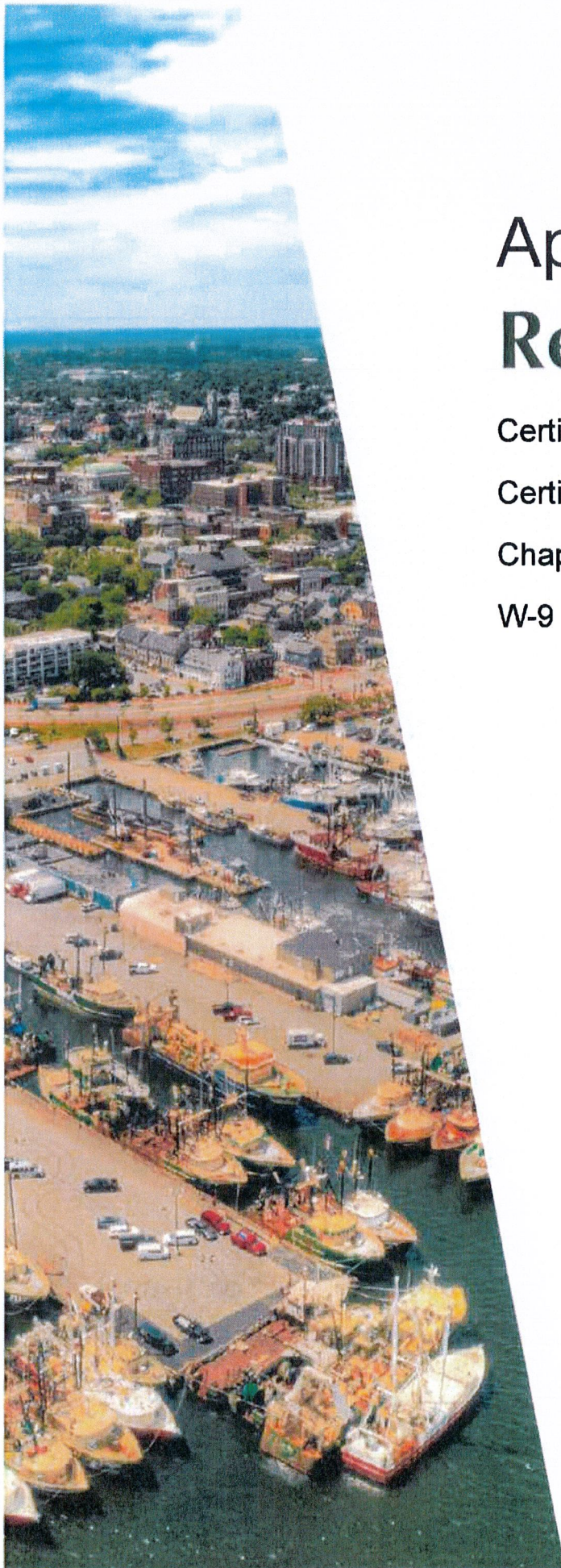
### Woods Hole Group Representative Project List

Role	Complete	Location	Project Name
Sub	Y	Barnstable County	Barnstable County Coastal Regulations
Prime	Y	Barnstable County, MA	Cape Cod Low Lying Roads
Sub	Y	Barnstable, MA	Hyannis Harbor
Prime	Y	Barnstable, MA	Sandy Neck Phased Retreat
Sub	Y	Beverly, MA	Bass River District Resilience Plan
Sub	Y	Beverly, MA	Vulnerability Assessment and Feasibility Study for Beverly Pump Station on Water Street
Prime	Y	Biddeford, ME	Southern Maine Dredge Purchase Feasibility Study
Sub	Y	Boston, MA	Feasibility of Harbor-wide Barrier Systems Preliminary Analysis for Boston Harbor
Sub	N	Boston, MA	Morrissey Boulevard
Sub	Y	Boston, MA	Climate Ready Boston Coastal Resilience Planning Projects (Charlestown, Dorchester, Downtown, East Boston, North End, South Boston)
Sub	Y	Boston, MA	Moakley Park, Tenean Beach, McConnell Park, Long Wharf, Langone Park and Puopolo Playground, Belle Isle Marsh, Border Street Waterfront, Carlton Wharf and Lewis Mall, Fort Point Channel, Raymond Flynn Marine Park)
Sub	Y	Boston, MA	Moon Island Coastal Risk Assessment, Mitigation Design and Benefit Cost Analysis
Sub	Y	Boston, MA	East Boston and Charlestown Resilience Solutions
Sub	Y	Boston, MA	South Boston Resilience Solutions
Sub	Y	Boston, MA	Moakley Park Master Plan
Prime	Y	Boston, MA	Fort Point Channel Resiliency Planning
Sub	N	Boston, MA	Dorchester & Tenean Beach Resiliency Project
Prime/Sub	Y	Braintree, MA	Watson Park Shoreline Erosion Mitigation and Coastal Resiliency Improvement Project
Sub	Y	Chelsea, MA	Island End River Adaptation Project
Prime	Y	Duxbury, MA	Duxbury Climate Change Vulnerability Assessment and Adaptation Plan
Sub	Y	Eastham, MA	Eastham Harbor & Waterways Plan
Prime	Y	Eastham, MA	Pre-Planning Town Landing Improvements
Prime	Y	Eastham, MA	Targeted Vulnerability Assessment of Low Lying Roads in the Town of Eastham
Prime	Y	Eastham, MA	Great Pond Herring Run Restoration
Prime	Y	Edgartown, MA	Edgartown Climate Change Vulnerability Assessment and Adaptation Plan
Sub	Y	Edgartown, MA	Chappy Ferry
Prime	Y	Essex, MA	North Shore Dredge Purchase Feasibility Study

Prime	Y	Fairhaven, MA	Fairhaven Climate Change Vulnerability Assessment
Prime	Y	Falmouth, MA	Resilient Woods Hole
Prime	Y	Falmouth, MA	Falmouth Climate Change Vulnerability Assessment and Adaptation Plan
Prime	Y	Falmouth, MA	Coastal Resilience Planning Surf Drive Area
Prime	Y	Falmouth, MA	Surf Drive Resilience Plan
Sub	Y	Gloucester, MA	Gloucester Coastal Climate Change Vulnerability Assessment and Adaptation Plan
Prime	Y	Gloucester, MA	Low Lying Roads Coastal Vulnerability Assessment
Sub	Y	Gloucester, MA	Municipal Harbor Plan Update
Sub	Y	Hingham, MA	Hingham Climate Change Vulnerability, Risk Assessment and Adaptation Study
Prime	Y	Hingham, MA	Inner Harbor Coastal Resiliency Improvements Project
Sub	Y	Hull, MA	Hull Coastal Climate Change Vulnerability Assessment and Adaptation Study
Sub	Y	Manchester by the Sea, MA	Manchester Inner Harbor
Prime	Y	Marblehead, MA	Municipal Shipyards Coastal Resiliency Improvements Project
Prime	Y	Marblehead, MA	Municipal Light Department and Adjoining Public Lands Coastal Resilience Implementation and Expanded Analysis and Design
Sub	Y	Mashpee, MA	Mashpee Harbor Plan
Sub	Y	Mattapoisett, MA	Mattapoisett Neck Road Flood Resiliency
Sub	Y	New Bedford/Fairhaven, MA	New Bedford Harbor Resilient Design Guidelines
Sub	Y	Oak Bluffs, MA	Oak Bluffs Coastal Climate Change Vulnerability Assessment and Adaptation Plan
Sub	Y	Oak Bluffs, MA	MV Hospital Access
Prime	Y	Orleans, MA	Nauset Beach Phased Retreat
Prime	Y	Orleans, MA	Orleans Dredge Purchase Feasibility Study
Sub	N	Provincetown, MA	Provincetown Coastal Resilience Plan
Prime	Y	Revere, MA	Saugus River Watershed Coastal Vulnerability and Adaptation Plan
Prime	Y	Revere, MA	Saugus River Watershed Shoreline Prioritization and Adaptation Project
Prime	Y	Salem, MA	Resilient Together El Punto - Palmer Cove Long Term Coastal Flood Resiliency Design
Prime	Y	Salem, MA	Resilient Together El Punto - Climate Vulnerability Assessment and Resilience Plan
Prime	Y	Sandwich, MA	Sandwich Climate Change Vulnerability / Risk Assessment and Adaptation Study
			Engineering Services: Permitting Efforts for Comprehensive Dredging and Disposal Permit for Scituate Harbor
Prime	N	Scituate, MA	Scituate Harbor
Sub	N	Scituate, MA	Resilient Design and Engineering Services for Flood Damage Reduction in Scituate Harbor
Sub	Y	Stonington, CT	Coastal Resilience Plan



Prime	Y	Wareham, MA	Wareham Climate Change Flood Vulnerability Assessment and Adaptation Planning
Sub	Y	Wareham, MA	Wareham Main Street
Prime	Y	Westport, MA	East Beach Corridor Vulnerability Study
Prime	Y	Winthrop, MA	Morton Street Resiliency Project
Sub	Y	Winthrop, MA	Coughlin Park Green Infrastructure Project
Prime	Y	Yarmouth, MA	Yarmouth Climate Change Vulnerability Assessment and Adaptation Plan
Prime	Y	Yarmouth, MA	Packet Landing Marina Alternatives Analysis



# Appendix C

## Required Forms

Certificate of Compliance with Tax Laws

Certificate of Non-Collusion

Chapter 803 Disclosure Statement

W-9 Form



**ATTACHMENT 1**

**CERTIFICATE OF COMPLIANCE WITH TAX LAWS**

Pursuant to MGL Ch. 62C, sec. 49A, I/we certify under the penalties of perjury that I/we have complied with all laws of the Commonwealth of Massachusetts relating to taxes.

954148514

Federal Identification Number

Tetra Tech, Inc.

Name of Company

31 State Street, 3rd Floor  
Street Address/P.O. Box No.

Boston, MA 02109  
City, State, Zip



Brian P. Sullivan, PE; President, Tetra Tech INC

July 11, 2024  
Date

**ATTACHMENT 2**

**CERTIFICATE OF NON-COLLUSION**

The undersigned certifies under penalties of perjury that this proposal has been made and submitted in good faith and without collusion or fraud with any other person. As used in this certification, the word "person" shall mean any natural person, business, partnership, corporation, union, committee, club, or other organization, entity, or group of individuals.



(Signature of individual submitting bid or proposal)

Brian P. Sullivan, PE; President, Tetra Tech INC

Tetra Tech, Inc.

(Name of Business)

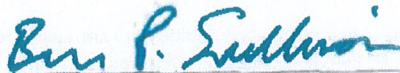


**ATTACHMENT 3**

**CHAPTER 803 DISCLOSURE STATEMENT**

In compliance with Chapter 60, Section 77B of the Massachusetts General Laws as amended by Chapter 803 of the Acts of 1985, I hereby certify, that I have never been convicted of a crime involving the willful and malicious setting of a fire, or of a crime involving the aiding, counseling, or procuring of a willful and malicious setting of a fire, or of a crime involving the fraudulent filing of a claim for fire insurance; nor am I delinquent in the payment of real estate taxes in the City of New Bedford, or being delinquent, an application for the abatement for such tax is pending or a pending petition before the appellate tax board has been filed in good faith.

This statement is made under the pains and penalties of perjury this 11th day of July, 2024.



Applicant (Signature)

Brian P. Sullivan, PE; President, Tetra Tech INE

Co-Applicant (Signature)

Co-Applicant (Signature)

## Request for Taxpayer Identification Number and Certification

Give Form to the  
requester. Do not  
send to the IRS.

► Go to [www.irs.gov/FormW9](http://www.irs.gov/FormW9) for instructions and the latest information.

Print or type. See Specific Instructions on page 3.	1 Name (as shown on your income tax return). Name is required on this line; do not leave this line blank. <b>FPA a Tetra Tech, Inc.</b>	
	2 Business name/disregarded entity name, if different from above <b>Tetra Tech, Inc.</b>	
	3 Check appropriate box for federal tax classification of the person whose name is entered on line 1. Check only <b>one</b> of the following seven boxes. <input type="checkbox"/> Individual/sole proprietor or single-member LLC <input checked="" type="checkbox"/> C Corporation <input type="checkbox"/> S Corporation <input type="checkbox"/> Partnership <input type="checkbox"/> Trust/estate <input type="checkbox"/> Limited liability company. Enter the tax classification (C=C corporation, S=S corporation, P=Partnership) ► _____ <b>Note:</b> Check the appropriate box in the line above for the tax classification of the single-member owner. Do not check LLC if the LLC is classified as a single-member LLC that is disregarded from the owner unless the owner of the LLC is another LLC that is <b>not</b> disregarded from the owner for U.S. federal tax purposes. Otherwise, a single-member LLC that is disregarded from the owner should check the appropriate box for the tax classification of its owner. <input type="checkbox"/> Other (see instructions) ► _____	
	4 Exemptions (codes apply only to certain entities, not individuals; see instructions on page 3): Exempt payee code (if any) _____ Exemption from FATCA reporting code (if any) _____ (Applies to accounts maintained outside the U.S.)	
	5 Address (number, street, and apt. or suite no.) See instructions. <b>100 Nickerson Road</b>	Requester's name and address (optional)
	6 City, state, and ZIP code <b>Marlborough, MA 01752</b>	
	7 List account number(s) here (optional)	

### Part I Taxpayer Identification Number (TIN)

Enter your TIN in the appropriate box. The TIN provided must match the name given on line 1 to avoid backup withholding. For individuals, this is generally your social security number (SSN). However, for a resident alien, sole proprietor, or disregarded entity, see the instructions for Part I, later. For other entities, it is your employer identification number (EIN). If you do not have a number, see *How to get a TIN*, later.

**Note:** If the account is in more than one name, see the instructions for line 1. Also see *What Name and Number To Give the Requester* for guidelines on whose number to enter.

Social security number								
			-				-	
or								
Employer identification number								
9	5	-	4	1	4	8	5	1

### Part II Certification

Under penalties of perjury, I certify that:

- The number shown on this form is my correct taxpayer identification number (or I am waiting for a number to be issued to me); and
- I am not subject to backup withholding because: (a) I am exempt from backup withholding, or (b) I have not been notified by the Internal Revenue Service (IRS) that I am subject to backup withholding as a result of a failure to report all interest or dividends, or (c) the IRS has notified me that I am no longer subject to backup withholding; and
- I am a U.S. citizen or other U.S. person (defined below); and
- The FATCA code(s) entered on this form (if any) indicating that I am exempt from FATCA reporting is correct.

**Certification instructions.** You must cross out item 2 above if you have been notified by the IRS that you are currently subject to backup withholding because you have failed to report all interest and dividends on your tax return. For real estate transactions, item 2 does not apply. For mortgage interest paid, acquisition or abandonment of secured property, cancellation of debt, contributions to an individual retirement arrangement (IRA), and generally, payments other than interest and dividends, you are not required to sign the certification, but you must provide your correct TIN. See the instructions for Part II, later.

Sign  
Here

Signature of  
U.S. person ►

*Euse Sanchez*

Date ► July 11, 2024

## General Instructions

Section references are to the Internal Revenue Code unless otherwise noted.

**Future developments.** For the latest information about developments related to Form W-9 and its instructions, such as legislation enacted after they were published, go to [www.irs.gov/FormW9](http://www.irs.gov/FormW9).

## Purpose of Form

An individual or entity (Form W-9 requester) who is required to file an information return with the IRS must obtain your correct taxpayer identification number (TIN) which may be your social security number (SSN), individual taxpayer identification number (ITIN), adoption taxpayer identification number (ATIN), or employer identification number (EIN), to report on an information return the amount paid to you, or other amount reportable on an information return. Examples of information returns include, but are not limited to, the following.

- Form 1099-INT (interest earned or paid)

- Form 1099-DIV (dividends, including those from stocks or mutual funds)
- Form 1099-MISC (various types of income, prizes, awards, or gross proceeds)
- Form 1099-B (stock or mutual fund sales and certain other transactions by brokers)
- Form 1099-S (proceeds from real estate transactions)
- Form 1099-K (merchant card and third party network transactions)
- Form 1098 (home mortgage interest), 1098-E (student loan interest), 1098-T (tuition)
- Form 1099-C (canceled debt)
- Form 1099-A (acquisition or abandonment of secured property)

Use Form W-9 only if you are a U.S. person (including a resident alien), to provide your correct TIN.

If you do not return Form W-9 to the requester with a TIN, you might be subject to backup withholding. See What is backup withholding, later.



By signing the filled-out form, you:

1. Certify that the TIN you are giving is correct (or you are waiting for a number to be issued),
2. Certify that you are not subject to backup withholding, or
3. Claim exemption from backup withholding if you are a U.S. exempt payee. If applicable, you are also certifying that as a U.S. person, your allocable share of any partnership income from a U.S. trade or business is not subject to the withholding tax on foreign partners' share of effectively connected income, and
4. Certify that FATCA code(s) entered on this form (if any) indicating that you are exempt from the FATCA reporting, is correct. See *What is FATCA reporting*, later, for further information.

**Note:** If you are a U.S. person and a requester gives you a form other than Form W-9 to request your TIN, you must use the requester's form if it is substantially similar to this Form W-9.

**Definition of a U.S. person.** For federal tax purposes, you are considered a U.S. person if you are:

- An individual who is a U.S. citizen or U.S. resident alien;
- A partnership, corporation, company, or association created or organized in the United States or under the laws of the United States;
- An estate (other than a foreign estate); or
- A domestic trust (as defined in Regulations section 301.7701-7).

**Special rules for partnerships.** Partnerships that conduct a trade or business in the United States are generally required to pay a withholding tax under section 1446 on any foreign partners' share of effectively connected taxable income from such business. Further, in certain cases where a Form W-9 has not been received, the rules under section 1446 require a partnership to presume that a partner is a foreign person, and pay the section 1446 withholding tax. Therefore, if you are a U.S. person that is a partner in a partnership conducting a trade or business in the United States, provide Form W-9 to the partnership to establish your U.S. status and avoid section 1446 withholding on your share of partnership income.

In the cases below, the following person must give Form W-9 to the partnership for purposes of establishing its U.S. status and avoiding withholding on its allocable share of net income from the partnership conducting a trade or business in the United States.

- In the case of a disregarded entity with a U.S. owner, the U.S. owner of the disregarded entity and not the entity;
- In the case of a grantor trust with a U.S. grantor or other U.S. owner, generally, the U.S. grantor or other U.S. owner of the grantor trust and not the trust; and
- In the case of a U.S. trust (other than a grantor trust), the U.S. trust (other than a grantor trust) and not the beneficiaries of the trust.

**Foreign person.** If you are a foreign person or the U.S. branch of a foreign bank that has elected to be treated as a U.S. person, do not use Form W-9. Instead, use the appropriate Form W-8 or Form 8233 (see Pub. 515, *Withholding of Tax on Nonresident Aliens and Foreign Entities*).

**Nonresident alien who becomes a resident alien.** Generally, only a nonresident alien individual may use the terms of a tax treaty to reduce or eliminate U.S. tax on certain types of income. However, most tax treaties contain a provision known as a "saving clause." Exceptions specified in the saving clause may permit an exemption from tax to continue for certain types of income even after the payee has otherwise become a U.S. resident alien for tax purposes.

If you are a U.S. resident alien who is relying on an exception contained in the saving clause of a tax treaty to claim an exemption from U.S. tax on certain types of income, you must attach a statement to Form W-9 that specifies the following five items.

1. The treaty country. Generally, this must be the same treaty under which you claimed exemption from tax as a nonresident alien.
2. The treaty article addressing the income.
3. The article number (or location) in the tax treaty that contains the saving clause and its exceptions.
4. The type and amount of income that qualifies for the exemption from tax.
5. Sufficient facts to justify the exemption from tax under the terms of the treaty article.

**Example.** Article 20 of the U.S.-China income tax treaty allows an exemption from tax for scholarship income received by a Chinese student temporarily present in the United States. Under U.S. law, this student will become a resident alien for tax purposes if his or her stay in the United States exceeds 5 calendar years. However, paragraph 2 of the first Protocol to the U.S.-China treaty (dated April 30, 1984) allows the provisions of Article 20 to continue to apply even after the Chinese student becomes a resident alien of the United States. A Chinese student who qualifies for this exception (under paragraph 2 of the first protocol) and is relying on this exception to claim an exemption from tax on his or her scholarship or fellowship income would attach to Form W-9 a statement that includes the information described above to support that exemption.

If you are a nonresident alien or a foreign entity, give the requester the appropriate completed Form W-8 or Form 8233.

## Backup Withholding

**What is backup withholding?** Persons making certain payments to you must under certain conditions withhold and pay to the IRS 28% of such payments. This is called "backup withholding." Payments that may be subject to backup withholding include interest, tax-exempt interest, dividends, broker and barter exchange transactions, rents, royalties, nonemployee pay, payments made in settlement of payment card and third party network transactions, and certain payments from fishing boat operators. Real estate transactions are not subject to backup withholding.

You will not be subject to backup withholding on payments you receive if you give the requester your correct TIN, make the proper certifications, and report all your taxable interest and dividends on your tax return.

**Payments you receive will be subject to backup withholding if:**

1. You do not furnish your TIN to the requester,
2. You do not certify your TIN when required (see the instructions for Part II for details),
3. The IRS tells the requester that you furnished an incorrect TIN,
4. The IRS tells you that you are subject to backup withholding because you did not report all your interest and dividends on your tax return (for reportable interest and dividends only), or
5. You do not certify to the requester that you are not subject to backup withholding under 4 above (for reportable interest and dividend accounts opened after 1983 only).

Certain payees and payments are exempt from backup withholding. See *Exempt payee code*, later, and the separate Instructions for the Requester of Form W-9 for more information.

Also see *Special rules for partnerships*, earlier.

## What is FATCA Reporting?

The Foreign Account Tax Compliance Act (FATCA) requires a participating foreign financial institution to report all United States account holders that are specified United States persons. Certain payees are exempt from FATCA reporting. See *Exemption from FATCA reporting code*, later, and the Instructions for the Requester of Form W-9 for more information.

## Updating Your Information

You must provide updated information to any person to whom you claimed to be an exempt payee if you are no longer an exempt payee and anticipate receiving reportable payments in the future from this person. For example, you may need to provide updated information if you are a C corporation that elects to be an S corporation, or if you no longer are tax exempt. In addition, you must furnish a new Form W-9 if the name or TIN changes for the account; for example, if the grantor of a grantor trust dies.

## Penalties

**Failure to furnish TIN.** If you fail to furnish your correct TIN to a requester, you are subject to a penalty of \$50 for each such failure unless your failure is due to reasonable cause and not to willful neglect.

**Civil penalty for false information with respect to withholding.** If you make a false statement with no reasonable basis that results in no backup withholding, you are subject to a \$500 penalty.

**Criminal penalty for falsifying information.** Willfully falsifying certifications or affirmations may subject you to criminal penalties including fines and/or imprisonment.

**Misuse of TINs.** If the requester discloses or uses TINs in violation of federal law, the requester may be subject to civil and criminal penalties.

## Specific Instructions

### Line 1

You must enter one of the following on this line; **do not** leave this line blank. The name should match the name on your tax return.

If this Form W-9 is for a joint account (other than an account maintained by a foreign financial institution (FFI)), list first, and then circle, the name of the person or entity whose number you entered in Part I of Form W-9. If you are providing Form W-9 to an FFI to document a joint account, each holder of the account that is a U.S. person must provide a Form W-9.

a. **Individual.** Generally, enter the name shown on your tax return. If you have changed your last name without informing the Social Security Administration (SSA) of the name change, enter your first name, the last name as shown on your social security card, and your new last name.

**Note: ITIN applicant:** Enter your individual name as it was entered on your Form W-7 application, line 1a. This should also be the same as the name you entered on the Form 1040/1040A/1040EZ you filed with your application.

b. **Sole proprietor or single-member LLC.** Enter your individual name as shown on your 1040/1040A/1040EZ on line 1. You may enter your business, trade, or "doing business as" (DBA) name on line 2.

c. **Partnership, LLC that is not a single-member LLC, C corporation, or S corporation.** Enter the entity's name as shown on the entity's tax return on line 1 and any business, trade, or DBA name on line 2.

d. **Other entities.** Enter your name as shown on required U.S. federal tax documents on line 1. This name should match the name shown on the charter or other legal document creating the entity. You may enter any business, trade, or DBA name on line 2.

e. **Disregarded entity.** For U.S. federal tax purposes, an entity that is disregarded as an entity separate from its owner is treated as a "disregarded entity." See Regulations section 301.7701-2(c)(2)(iii). Enter the owner's name on line 1. The name of the entity entered on line 1 should never be a disregarded entity. The name on line 1 should be the name shown on the income tax return on which the income should be reported. For example, if a foreign LLC that is treated as a disregarded entity for U.S. federal tax purposes has a single owner that is a U.S. person, the U.S. owner's name is required to be provided on line 1. If the direct owner of the entity is also a disregarded entity, enter the first owner that is not disregarded for federal tax purposes. Enter the disregarded entity's name on line 2, "Business name/disregarded entity name." If the owner of the disregarded entity is a foreign person, the owner must complete an appropriate Form W-8 instead of a Form W-9. This is the case even if the foreign person has a U.S. TIN.

### Line 2

If you have a business name, trade name, DBA name, or disregarded entity name, you may enter it on line 2.

### Line 3

Check the appropriate box on line 3 for the U.S. federal tax classification of the person whose name is entered on line 1. Check only one box on line 3.

IF the entity/person on line 1 is a(n) . . .	THEN check the box for . . .
• Corporation	Corporation
• Individual • Sole proprietorship, or • Single-member limited liability company (LLC) owned by an individual and disregarded for U.S. federal tax purposes.	Individual/sole proprietor or single-member LLC
• LLC treated as a partnership for U.S. federal tax purposes, • LLC that has filed Form 8832 or 2553 to be taxed as a corporation, or • LLC that is disregarded as an entity separate from its owner but the owner is another LLC that is not disregarded for U.S. federal tax purposes.	Limited liability company and enter the appropriate tax classification. (P= Partnership; C= C corporation; or S= S corporation)
• Partnership	Partnership
• Trust/estate	Trust/estate

### Line 4, Exemptions

If you are exempt from backup withholding and/or FATCA reporting, enter in the appropriate space on line 4 any code(s) that may apply to you.

#### Exempt payee code.

- Generally, individuals (including sole proprietors) are not exempt from backup withholding.
- Except as provided below, corporations are exempt from backup withholding for certain payments, including interest and dividends.
- Corporations are not exempt from backup withholding for payments made in settlement of payment card or third party network transactions.
- Corporations are not exempt from backup withholding with respect to attorneys' fees or gross proceeds paid to attorneys, and corporations that provide medical or health care services are not exempt with respect to payments reportable on Form 1099-MISC.

The following codes identify payees that are exempt from backup withholding. Enter the appropriate code in the space in line 4.

- 1—An organization exempt from tax under section 501(a), any IRA, or a custodial account under section 403(b)(7) if the account satisfies the requirements of section 401(f)(2)
- 2—The United States or any of its agencies or instrumentalities
- 3—A state, the District of Columbia, a U.S. commonwealth or possession, or any of their political subdivisions or instrumentalities
- 4—A foreign government or any of its political subdivisions, agencies, or instrumentalities
- 5—A corporation
- 6—A dealer in securities or commodities required to register in the United States, the District of Columbia, or a U.S. commonwealth or possession
- 7—A futures commission merchant registered with the Commodity Futures Trading Commission
- 8—A real estate investment trust
- 9—An entity registered at all times during the tax year under the Investment Company Act of 1940
- 10—A common trust fund operated by a bank under section 584(a)
- 11—A financial institution
- 12—A middleman known in the investment community as a nominee or custodian
- 13—A trust exempt from tax under section 664 or described in section 4947



The following chart shows types of payments that may be exempt from backup withholding. The chart applies to the exempt payees listed above, 1 through 13.

IF the payment is for . . .	THEN the payment is exempt for . . .
Interest and dividend payments	All exempt payees except for 7
Broker transactions	Exempt payees 1 through 4 and 6 through 11 and all C corporations. S corporations must not enter an exempt payee code because they are exempt only for sales of noncovered securities acquired prior to 2012.
Barter exchange transactions and patronage dividends	Exempt payees 1 through 4
Payments over \$600 required to be reported and direct sales over \$5,000 <sup>1</sup>	Generally, exempt payees 1 through 5 <sup>2</sup>
Payments made in settlement of payment card or third party network transactions	Exempt payees 1 through 4

<sup>1</sup> See Form 1099-MISC, Miscellaneous Income, and its instructions.

<sup>2</sup> However, the following payments made to a corporation and reportable on Form 1099-MISC are not exempt from backup withholding: medical and health care payments, attorneys' fees, gross proceeds paid to an attorney reportable under section 6045(f), and payments for services paid by a federal executive agency.

**Exemption from FATCA reporting code.** The following codes identify payees that are exempt from reporting under FATCA. These codes apply to persons submitting this form for accounts maintained outside of the United States by certain foreign financial institutions. Therefore, if you are only submitting this form for an account you hold in the United States, you may leave this field blank. Consult with the person requesting this form if you are uncertain if the financial institution is subject to these requirements. A requester may indicate that a code is not required by providing you with a Form W-9 with "Not Applicable" (or any similar indication) written or printed on the line for a FATCA exemption code.

A—An organization exempt from tax under section 501(a) or any individual retirement plan as defined in section 7701(a)(37)

B—The United States or any of its agencies or instrumentalities

C—A state, the District of Columbia, a U.S. commonwealth or possession, or any of their political subdivisions or instrumentalities

D—A corporation the stock of which is regularly traded on one or more established securities markets, as described in Regulations section 1.1472-1(c)(1)(i)

E—A corporation that is a member of the same expanded affiliated group as a corporation described in Regulations section 1.1472-1(c)(1)(i)

F—A dealer in securities, commodities, or derivative financial instruments (including notional principal contracts, futures, forwards, and options) that is registered as such under the laws of the United States or any state

G—A real estate investment trust

H—A regulated investment company as defined in section 851 or an entity registered at all times during the tax year under the Investment Company Act of 1940

I—A common trust fund as defined in section 584(a)

J—A bank as defined in section 581

K—A broker

L—A trust exempt from tax under section 664 or described in section 4947(a)(1)

M—A tax exempt trust under a section 403(b) plan or section 457(g) plan

**Note:** You may wish to consult with the financial institution requesting this form to determine whether the FATCA code and/or exempt payee code should be completed.

## Line 5

Enter your address (number, street, and apartment or suite number). This is where the requester of this Form W-9 will mail your information returns. If this address differs from the one the requester already has on file, write NEW at the top. If a new address is provided, there is still a chance the old address will be used until the payor changes your address in their records.

## Line 6

Enter your city, state, and ZIP code.

## Part I. Taxpayer Identification Number (TIN)

**Enter your TIN in the appropriate box.** If you are a resident alien and you do not have and are not eligible to get an SSN, your TIN is your IRS individual taxpayer identification number (ITIN). Enter it in the social security number box. If you do not have an ITIN, see *How to get a TIN* below.

If you are a sole proprietor and you have an EIN, you may enter either your SSN or EIN.

If you are a single-member LLC that is disregarded as an entity separate from its owner, enter the owner's SSN (or EIN, if the owner has one). Do not enter the disregarded entity's EIN. If the LLC is classified as a corporation or partnership, enter the entity's EIN.

**Note:** See *What Name and Number To Give the Requester*, later, for further clarification of name and TIN combinations.

**How to get a TIN.** If you do not have a TIN, apply for one immediately. To apply for an SSN, get Form SS-5, Application for a Social Security Card, from your local SSA office or get this form online at [www.SSA.gov](http://www.SSA.gov). You may also get this form by calling 1-800-772-1213. Use Form W-7, Application for IRS Individual Taxpayer Identification Number, to apply for an ITIN, or Form SS-4, Application for Employer Identification Number, to apply for an EIN. You can apply for an EIN online by accessing the IRS website at [www.irs.gov/Businesses](http://www.irs.gov/Businesses) and clicking on Employer Identification Number (EIN) under Starting a Business. Go to [www.irs.gov/Forms](http://www.irs.gov/Forms) to view, download, or print Form W-7 and/or Form SS-4. Or, you can go to [www.irs.gov/OrderForms](http://www.irs.gov/OrderForms) to place an order and have Form W-7 and/or SS-4 mailed to you within 10 business days.

If you are asked to complete Form W-9 but do not have a TIN, apply for a TIN and write "Applied For" in the space for the TIN, sign and date the form, and give it to the requester. For interest and dividend payments, and certain payments made with respect to readily tradable instruments, generally you will have 60 days to get a TIN and give it to the requester before you are subject to backup withholding on payments. The 60-day rule does not apply to other types of payments. You will be subject to backup withholding on all such payments until you provide your TIN to the requester.

**Note:** Entering "Applied For" means that you have already applied for a TIN or that you intend to apply for one soon.

**Caution:** A disregarded U.S. entity that has a foreign owner must use the appropriate Form W-8.

## Part II. Certification

To establish to the withholding agent that you are a U.S. person, or resident alien, sign Form W-9. You may be requested to sign by the withholding agent even if item 1, 4, or 5 below indicates otherwise.

For a joint account, only the person whose TIN is shown in Part I should sign (when required). In the case of a disregarded entity, the person identified on line 1 must sign. Exempt payees, see *Exempt payee code*, earlier.

**Signature requirements.** Complete the certification as indicated in items 1 through 5 below.

**1. Interest, dividend, and barter exchange accounts opened before 1984 and broker accounts considered active during 1983.** You must give your correct TIN, but you do not have to sign the certification.

**2. Interest, dividend, broker, and barter exchange accounts opened after 1983 and broker accounts considered inactive during 1983.** You must sign the certification or backup withholding will apply. If you are subject to backup withholding and you are merely providing your correct TIN to the requester, you must cross out item 2 in the certification before signing the form.

**3. Real estate transactions.** You must sign the certification. You may cross out item 2 of the certification.

**4. Other payments.** You must give your correct TIN, but you do not have to sign the certification unless you have been notified that you have previously given an incorrect TIN. "Other payments" include payments made in the course of the requester's trade or business for rents, royalties, goods (other than bills for merchandise), medical and health care services (including payments to corporations), payments to a nonemployee for services, payments made in settlement of payment card and third party network transactions, payments to certain fishing boat crew members and fishermen, and gross proceeds paid to attorneys (including payments to corporations).

**5. Mortgage interest paid by you, acquisition or abandonment of secured property, cancellation of debt, qualified tuition program payments (under section 529), ABLE accounts (under section 529A), IRA, Coverdell ESA, Archer MSA or HSA contributions or distributions, and pension distributions.** You must give your correct TIN, but you do not have to sign the certification.

## What Name and Number To Give the Requester

For this type of account:	Give name and SSN of:
1. Individual	The individual
2. Two or more individuals (joint account) other than an account maintained by an FFI	The actual owner of the account or, if combined funds, the first individual on the account <sup>1</sup>
3. Two or more U.S. persons (joint account maintained by an FFI)	Each holder of the account
4. Custodial account of a minor (Uniform Gift to Minors Act)	The minor <sup>2</sup>
5. a. The usual revocable savings trust (grantor is also trustee) b. So-called trust account that is not a legal or valid trust under state law	The grantor-trustee <sup>1</sup> The actual owner <sup>1</sup>
6. Sole proprietorship or disregarded entity owned by an individual	The owner <sup>3</sup>
7. Grantor trust filing under Optional Form 1099 Filing Method 1 (see Regulations section 1.671-4(b)(2)(i)(A))	The grantor*
For this type of account:	Give name and EIN of:
8. Disregarded entity not owned by an individual	The owner
9. A valid trust, estate, or pension trust	Legal entity <sup>4</sup>
10. Corporation or LLC electing corporate status on Form 8832 or Form 2553	The corporation
11. Association, club, religious, charitable, educational, or other tax-exempt organization	The organization
12. Partnership or multi-member LLC	The partnership
13. A broker or registered nominee	The broker or nominee

For this type of account:	Give name and EIN of:
14. Account with the Department of Agriculture in the name of a public entity (such as a state or local government, school district, or prison) that receives agricultural program payments	The public entity
15. Grantor trust filing under the Form 1041 Filing Method or the Optional Form 1099 Filing Method 2 (see Regulations section 1.671-4(b)(2)(i)(B))	The trust

<sup>1</sup> List first and circle the name of the person whose number you furnish. If only one person on a joint account has an SSN, that person's number must be furnished.

<sup>2</sup> Circle the minor's name and furnish the minor's SSN.

<sup>3</sup> You must show your individual name and you may also enter your business or DBA name on the "Business name/disregarded entity" name line. You may use either your SSN or EIN (if you have one), but the IRS encourages you to use your SSN.

<sup>4</sup> List first and circle the name of the trust, estate, or pension trust. (Do not furnish the TIN of the personal representative or trustee unless the legal entity itself is not designated in the account title.) Also see *Special rules for partnerships*, earlier.

**\*Note:** The grantor also must provide a Form W-9 to trustee of trust.

**Note:** If no name is circled when more than one name is listed, the number will be considered to be that of the first name listed.

## Secure Your Tax Records From Identity Theft

Identity theft occurs when someone uses your personal information such as your name, SSN, or other identifying information, without your permission, to commit fraud or other crimes. An identity thief may use your SSN to get a job or may file a tax return using your SSN to receive a refund.

To reduce your risk:

- Protect your SSN,
- Ensure your employer is protecting your SSN, and
- Be careful when choosing a tax preparer.

If your tax records are affected by identity theft and you receive a notice from the IRS, respond right away to the name and phone number printed on the IRS notice or letter.

If your tax records are not currently affected by identity theft but you think you are at risk due to a lost or stolen purse or wallet, questionable credit card activity or credit report, contact the IRS Identity Theft Hotline at 1-800-908-4490 or submit Form 14039.

For more information, see Pub. 5027, Identity Theft Information for Taxpayers.

Victims of identity theft who are experiencing economic harm or a systemic problem, or are seeking help in resolving tax problems that have not been resolved through normal channels, may be eligible for Taxpayer Advocate Service (TAS) assistance. You can reach TAS by calling the TAS toll-free case intake line at 1-877-777-4778 or TTY/TDD 1-800-829-4059.

### Protect yourself from suspicious emails or phishing schemes.

Phishing is the creation and use of email and websites designed to mimic legitimate business emails and websites. The most common act is sending an email to a user falsely claiming to be an established legitimate enterprise in an attempt to scam the user into surrendering private information that will be used for identity theft.



The IRS does not initiate contacts with taxpayers via emails. Also, the IRS does not request personal detailed information through email or ask taxpayers for the PIN numbers, passwords, or similar secret access information for their credit card, bank, or other financial accounts.

If you receive an unsolicited email claiming to be from the IRS, forward this message to [phishing@irs.gov](mailto:phishing@irs.gov). You may also report misuse of the IRS name, logo, or other IRS property to the Treasury Inspector General for Tax Administration (TIGTA) at 1-800-366-4484. You can forward suspicious emails to the Federal Trade Commission at [spam@uce.gov](mailto:spam@uce.gov) or report them at [www.ftc.gov/complaint](http://www.ftc.gov/complaint). You can contact the FTC at [www.ftc.gov/idtheft](http://www.ftc.gov/idtheft) or 877-IDTHEFT (877-438-4338). If you have been the victim of identity theft, see [www.IdentityTheft.gov](http://www.IdentityTheft.gov) and Pub. 5027.

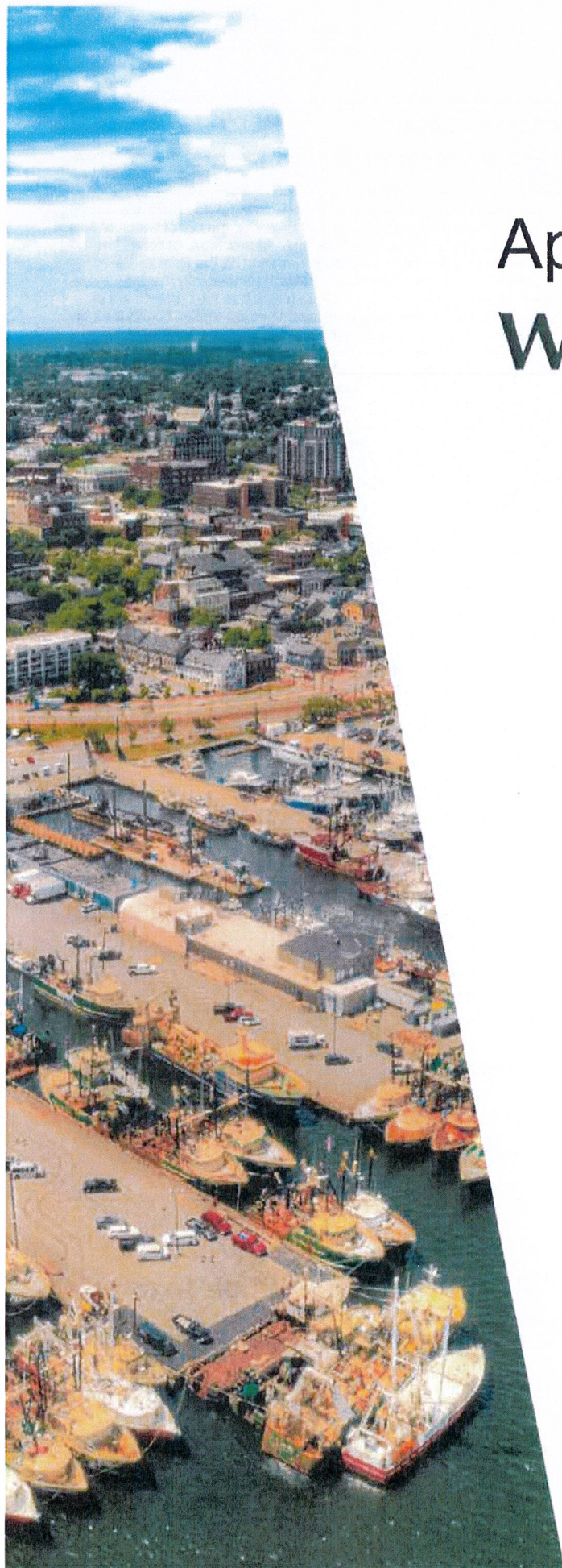
Visit [www.irs.gov/IdentityTheft](http://www.irs.gov/IdentityTheft) to learn more about identity theft and how to reduce your risk.

## Privacy Act Notice

Section 6109 of the Internal Revenue Code requires you to provide your correct TIN to persons (including federal agencies) who are required to file information returns with the IRS to report interest, dividends, or certain other income paid to you; mortgage interest you paid; the acquisition or abandonment of secured property; the cancellation of debt; or contributions you made to an IRA, Archer MSA, or HSA. The person collecting this form uses the information on the form to file information returns with the IRS, reporting the above information. Routine uses of this information include giving it to the Department of Justice for civil and criminal litigation and to cities, states, the District of Columbia, and U.S. commonwealths and possessions for use in administering their laws. The information also may be disclosed to other countries under a treaty, to federal and state agencies to enforce civil and criminal laws, or to federal law enforcement and intelligence agencies to combat terrorism. You must provide your TIN whether or not you are required to file a tax return. Under section 3406, payers must generally withhold a percentage of taxable interest, dividend, and certain other payments to a payee who does not give a TIN to the payer. Certain penalties may also apply for providing false or fraudulent information.

# Appendix D

## Work Samples





## Sample Work Products

As requested in the RFP, we are pleased to provide samples of our team member's work products. The attached flash drive includes an electronic copy of our proposal, complete with links to the following representative work samples available in the public domain:

1. **Hyannis Harbor Master Plan (Tetra Tech/BRR/WHG)**
  - [A Resilient Hyannis Harbor Story Map](#)
2. **2019 Economic Impact Study of the New Bedford/Fairhaven Harbor (Martin/Foth)**
  - [Final 2019 Economic Impact Study of the New Bedford/Fairhaven Harbor](#)
3. **Lynn Municipal Harbor Plan (Tetra Tech)**
  - [Final Lynn Municipal Harbor Plan Amendment and DPA Master Plan](#)
4. **Lynn Revised Waterfront Master Plan (Tetra Tech)**
  - [Final Lynn Revised Waterfront Master Plan](#)
5. **Lynn Waterfront Open Space Master Plan (BRR/WHG)**
  - [Final Lynn Waterfront Open Space Master Plan](#)
6. **Island End River Flood Resilience Project (FPA/Tetra Tech)**
  - [Island End River Flood Resilience Project Website](#)
7. **Beverly Bass River Resilience Plan (Tetra Tech/WHG)**
  - [Beverly Bass River District Resilience Plan Final Report](#)
8. **Beverly Lynch Park Resilient Design (FPA/WHG)**
  - [Resiliency Workshop and Open House Presentation Slides](#)
9. **Beverly Water St. Pump Station Vulnerability Assessment & Feasibility Study (FPA/Tetra Tech/WHG)**
  - [Final Vulnerability Assessment & Feasibility Study](#)
  - [Flooding Maps](#)
10. **Gloucester MHP and DPA Update (FPA/Tetra Tech/WHG)**
  - [Fourth Draft of the 2024 Gloucester Harbor Plan](#)
11. **Everett Hazard Mitigation Plan Update (FPA)**
  - [Everett Hazard Mitigation Plan Update Draft](#)
  - [Everett Conservation Commission HMP Presentation](#)

We have also provided electronic copies of the following work products on the flash drive:

1. 2023 Fairhaven CCVA Final Report
2. 2024 Mashpee Harbor Plan – Memoranda
3. Hyannis Harbor Master Plan FY24 MVP Action Grant Deliverables

Additional samples are provided on the following pages.



**LOWELL FORWARD OPPORTUNITIES + CONSTRAINTS**

**THE ACRE**

**THE HIGHLANDS**

**LEGEND**

**ZONES**

- COMMUNITY FACILITY
- CANAL DISTRICT
- GATEWAY OPPORTUNITY

**CONNECTIONS**

- CANAL WALK
- ALTERNATIVE CANAL WALK ROUTE
- CANAL WALK CONNECTION
- PEDESTRIAN BRIDGE
- GATEWAY CONNECTION POINT

**Scale:** 0 250 500 1000 Feet

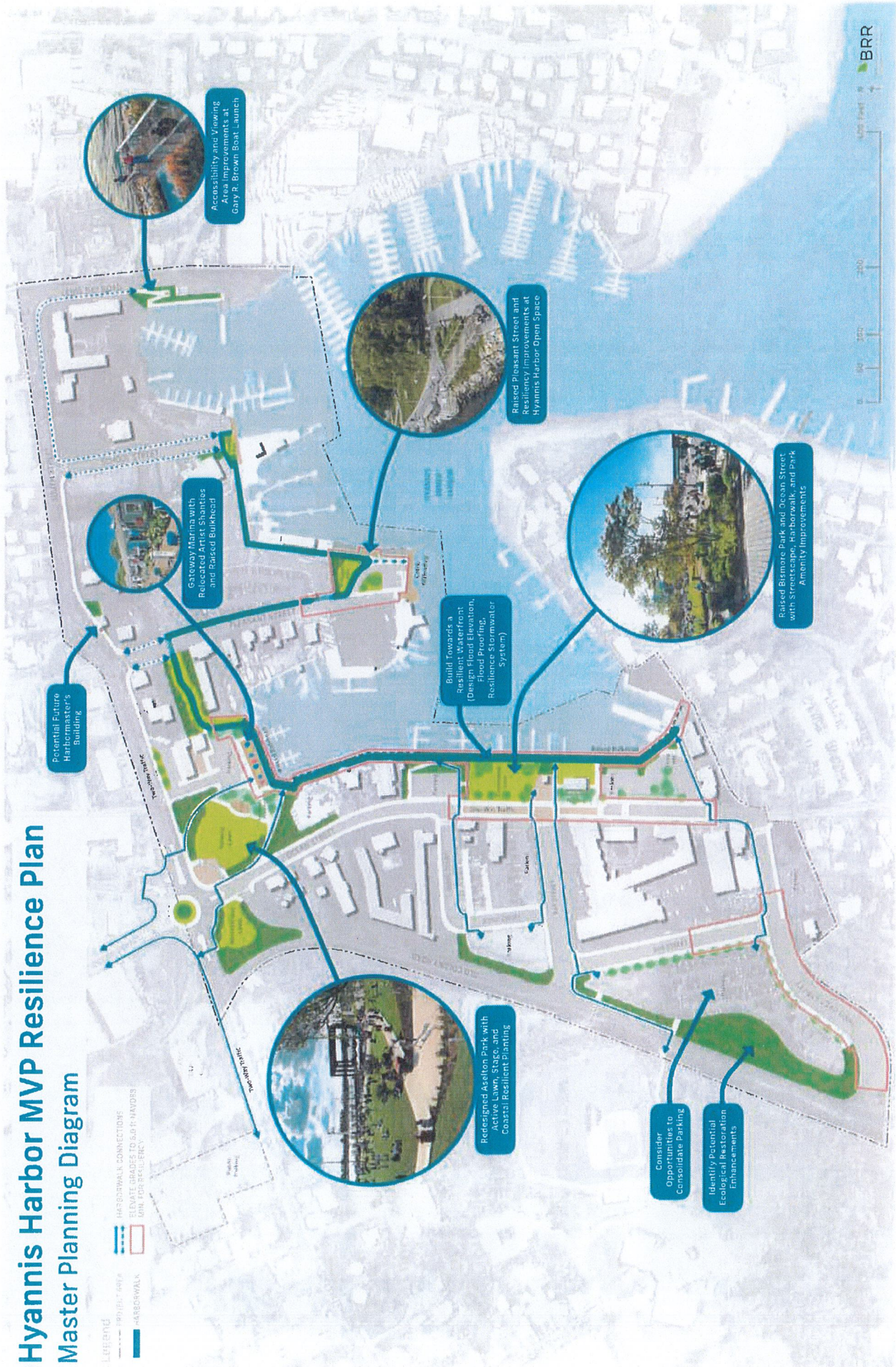
**Brown, Richardson + Rowe**  
landscape architects and planners

**Brown, Richardson + Rowe**  
*landscape architects and planners*

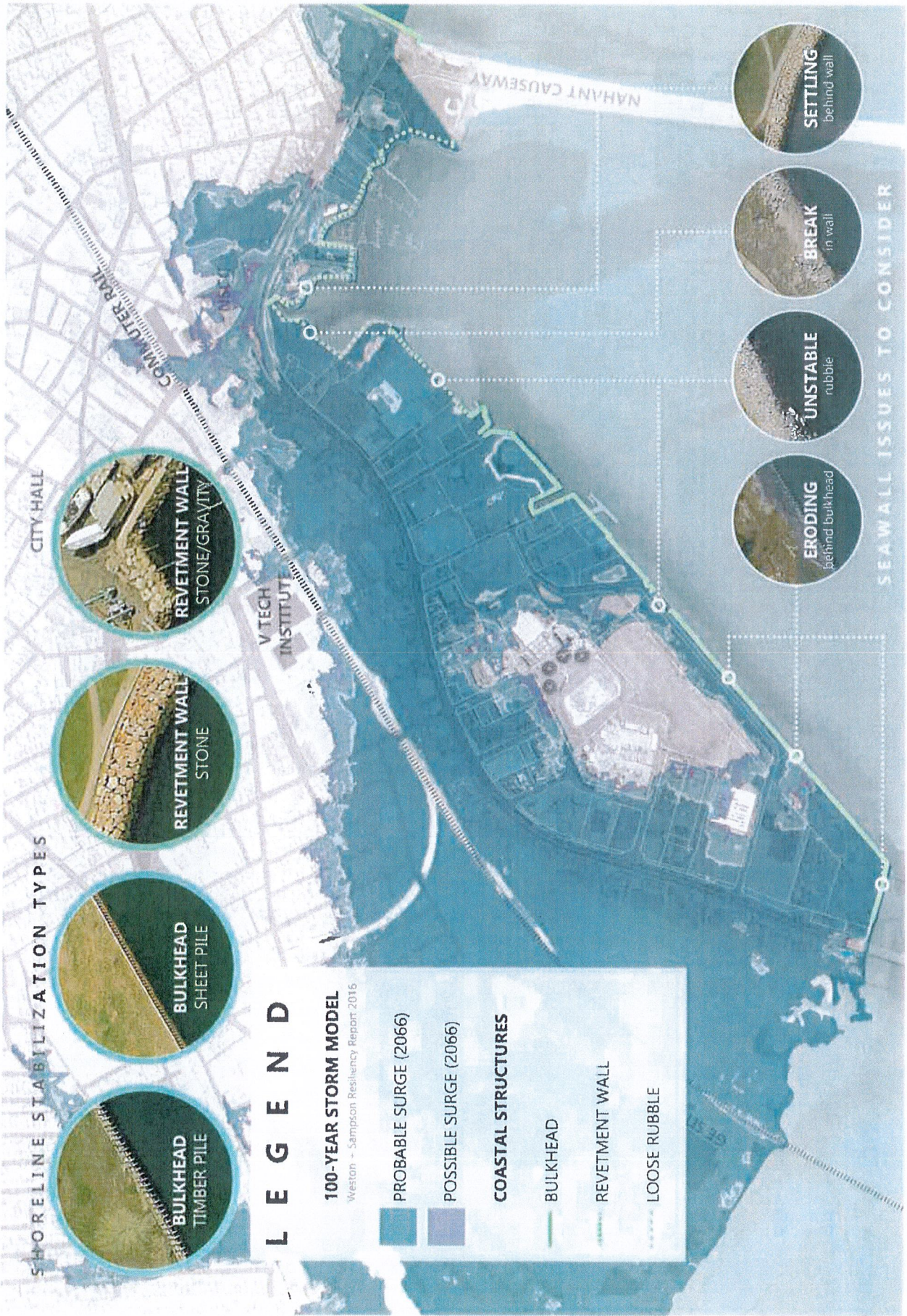




# Hyannis Harbor MVP Resilience Plan Master Planning Diagram









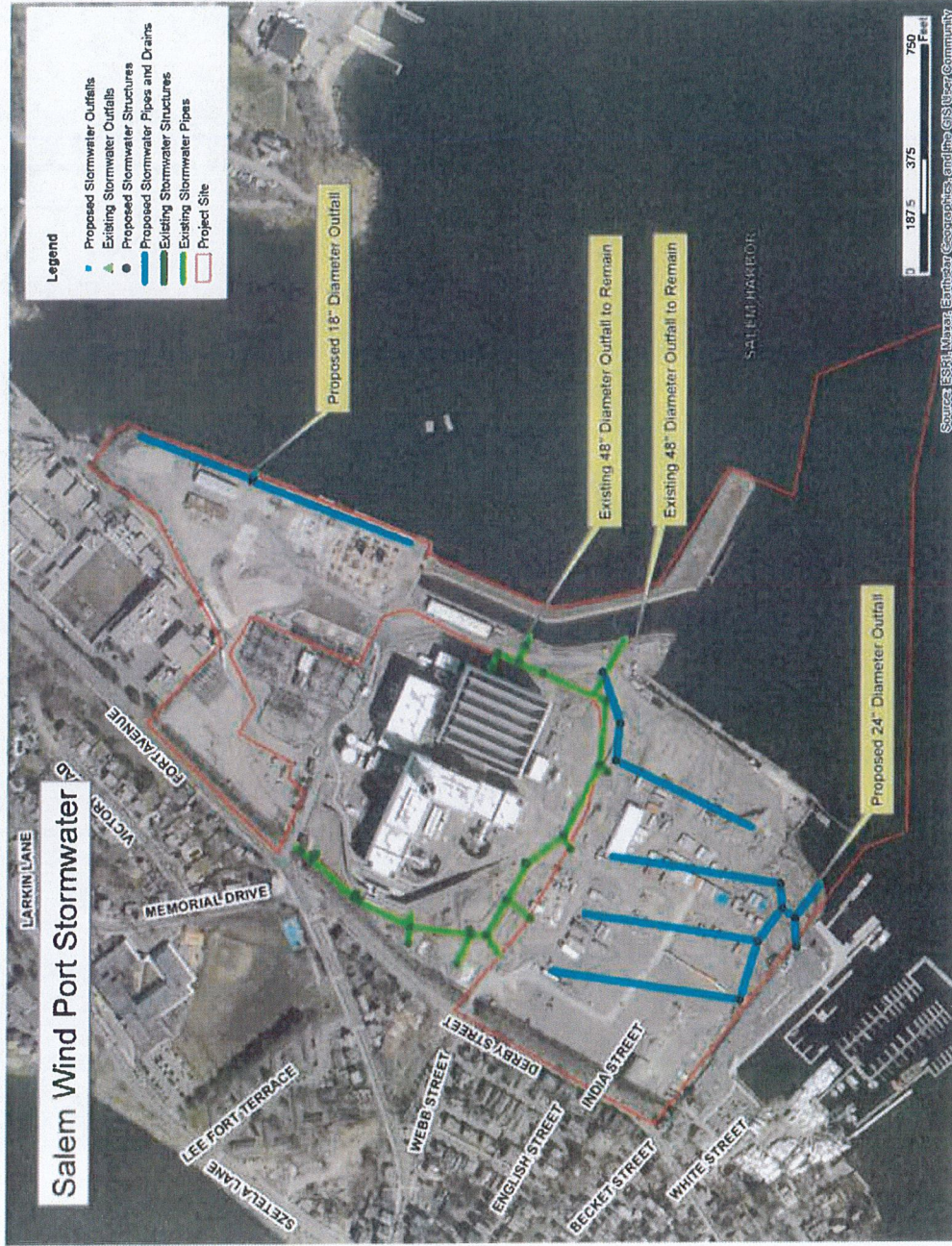
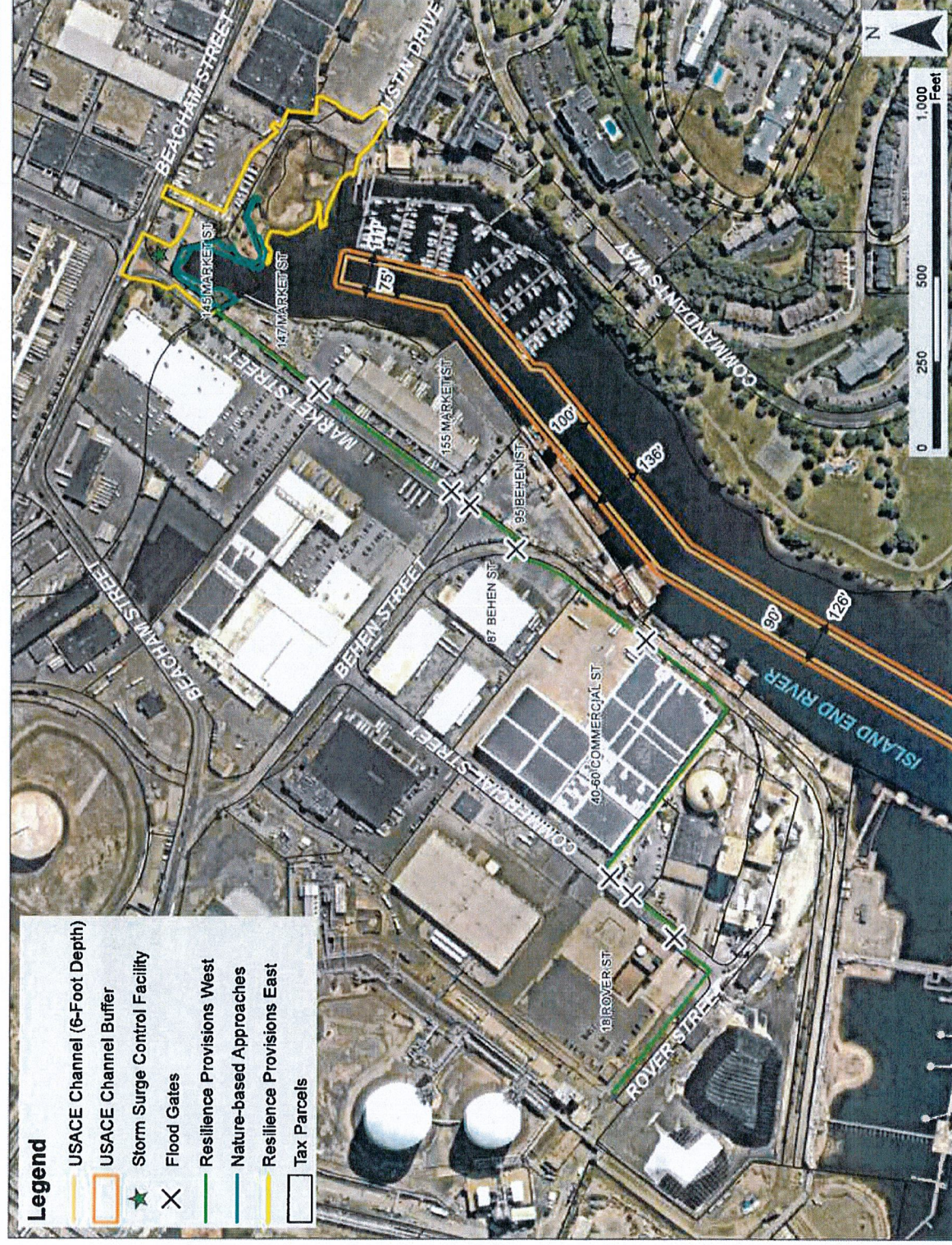


Figure 8 Stormwater Plan Source:  
Fort Point Associates, Inc.





Chelsea, MA  
Everett, MA

Figure 5-2  
Federal Navigation Channel  
Source: Fort Point Associates, Inc., 2023









## **Fort Point Associates, Inc.**

*Urban Planning   Environmental Consulting   Project Permitting*  
A TETRA TECH COMPANY

Fort Point Associates, Inc.  
A Tetra Tech Company  
31 State Street, 3<sup>rd</sup> Floor  
Boston, MA 02109





**Subject:** Fairhaven-New Bedford Harbor Plan Update

**Dear Residents and Stakeholders,**

As a representative of the Town of Fairhaven on the Fairhaven-New Bedford Harbor Plan Committee, I am pleased to provide a synopsis of our inaugural meeting with the selected planning consultants, Fort Point Associates, held on Tuesday, December 10, 2024. This meeting included key officials such as Mr. Tim Cox (Fairhaven Harbor Master), Mr. Hugh Bruce (Fairhaven Land Use Director), and Mr. Gordon Carr (Executive Director of the Port of New Bedford), alongside several representatives from the City of New Bedford.

During this initial session, the consultants outlined their approach to engaging the community to ensure the plan reflects the perspectives of residents and business owners in both Fairhaven and New Bedford. They emphasized that the plan must be created *"for the community and by the community."* In response, I underscored that while Fairhaven may be smaller in population and commercial density, we demand equal participation in shaping the design and recommendations for the harbor and waters we share.

I shared the following key points with the consultants and our colleagues from New Bedford:

1. **Environmental Responsibility:** A meaningful Harbor Plan cannot move forward unless the City of New Bedford addresses its combined sewer overflow (CSO) discharges, which release hundreds of millions of gallons of raw waste into the inner and outer harbor. Cities like Providence, Pawtucket, and Fall River have resolved similar issues by implementing holding tanks. Fairhaven deserves the same commitment to environmental integrity.
2. **Smart Development:** Fairhaven recently approved a 40R district in our waterfront area—a step forward for smart, mixed-use development. Mr. Webb will provide further details to the consultants. Issues like coastal resiliency, flooding, and dredging are crucial for protecting both current commercial activity and future development opportunities.
3. **Bridge Renewal:** Our communities are physically connected by a bridge that, after more than a century, is finally slated for redesign. The new bridge must not only accommodate vessel traffic but also serve as a pedestrian-friendly gateway into the heart of New Bedford. Its design should honor our shared coastal heritage and support our collective future.
4. **Preserving Fairhaven's Coastal Character:** Fairhaven is a coastal gem where families and tourists enjoy beaches, Fort Phoenix, fishing, shell fishing, and local dining. The Harbor Plan must prioritize protecting our environment to ensure future generations can enjoy these treasured assets.

I, along with other members of the Fairhaven delegation, will actively seek input, provide updates at public meetings, and ensure that Fairhaven's voice is heard. Though we are a smaller community, we will insist on equal representation in the planning of the harbor we share.

**Sincerely,**

Rick Trapilo

*Representative, Fairhaven-New Bedford Harbor Plan Committee*



Wayne Hayward  
48 Gellette Road  
Fairhaven, MA

Re: January 13, 2025 Public Tree Hearing comment

I would like to suggest that a little prior planning could have avoided the tree hearing. If the owner of 32 Union St were to give an easement to the Town of Fairhaven, along their western property line for the installation of two, four-inch PVC pipes, carrying parallel service lateral feeders from the pole to the service disconnect all Eversource work except tying the new service at the pole could be eliminated. As in discontinued paper streets containing utilities, the homeowner would be prohibited from building additions, garages or inground pools. Since the easement would be within the side yard zoning setback, they couldn't build these structures anyway. They could use the narrow easement for above ground pool, shed, patio or driveway.

The library service is 800A, 480V, which is low-voltage. Two PVC pipes containing low-voltage conductors, buried 18-24 inches, is no more risk than a residential underground service. Eversource would save all expense of manpower, equipment, materials, tree arborist, tree cutting services and police details. In return, Eversource could credit the town a portion of its 100% savings as a grant, credit to help offset the costs. The costs of \$2,000/ft for Eversource to install underground pipes in R.O.W. is nonsense. The existing electrical contractor for the library could quote a price for the service, as this is the kind of work they normally do at very little costs.

The granting of an easement to the town can be recorded immediately, as is the property owners' right. The acceptance of the easement *may* require a future town meeting vote or Select Board vote, but I cannot imagine it would be anything but a unanimous vote. street

The properties on Union Street, with the two oak trees, are worth more than without in my opinion. Given the significant tree loss we are seeing in the area of Town Hall, these healthy trees are an extremely valuable asset to the public. The proposed utility upgrades, as envisioned, would further impinge on the beauty of our most precious town center, which needs to be avoided.

The Maple tree has been repeatedly damaged, neglected and caused vehicle damage and needs to be replaced.

Thank You.





99 Green St

Fairhaven MA

January 10, 2025

Select Board

Re: public comment on Union Street tree removal

To Whom It May Concern:

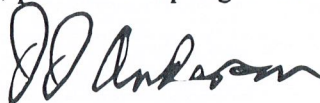
I am writing an addendum to my letter posted to the public meeting of December 18 to discuss the tree removal on Union street. Because the public had no advance knowledge of the reasons for the tree removal other than it would be done, it was only at the meeting that I discovered that the utility Eversource was going to string additional high voltage lines from an existing pole westward, along Union street, through the area of the trees; there are already low voltage secondary wires through the canopies, as indeed there are many such accommodations throughout Fairhaven. However, the high voltage lines, according to my research, need considerably more isolation from potential conductors. So it's clear why Eversource wants to remove the trees.

However, it begs the question, what is the additional load requirement that forces this solution? According to testimony at the December 18 meeting, it's necessary for the upgrading of power to the Millicent Library. There are three poles in close proximity to the library now. What other options does Eversource have to supply an increment of power that wouldn't eliminate two splendid pin oak trees, trees that are flourishing, at least 86 years old, from a central area that has so few such trees left? Is this a case of, to a hammer everything looks like a nail?

Eversource did not attend the December 18 meeting, and no one in BPW had the expertise (by their own admission) to answer the question. The issue of the tree removal centered on Eversource's information, so the public's "input" into the decision was a farce.

This has been my first foray into the alleged "open meeting" arena. Sadly, I am extremely disappointed. With the preordained outcome, and the failed process. Additionally, I am concerned that the Eversource "tail" is wagging the town governance "dog". Why not have a consultant to the town with expertise in power systems to review Eversource's *recommendations*, prior to accepting its aesthetic overrides?

James Anderson



Precinct 1, Member, Town Meeting



99 Green St

Fairhaven MA

DEC 16 '24 PM2:59  
BOARD OF PUBLIC WORKS

December 16, 2024

Tree Warden

Board of Public Works

Town of Fairhaven

To Whom It May Concern:

We are writing about the scheduled removal of trees on Union street, to be discussed at the advertised public meeting December 18. We have done some research since we will be affected (our house fronts on Union, one block from the affected area).

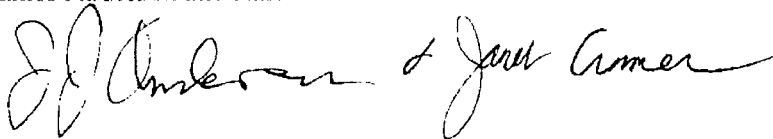
The trees are two (native) pin oaks in line on the northern side of Union between Walnut and William. I measured their circumference at the standard 4.5 foot height from ground level. The westernmost oak was 7ft 3 inches, the easternmost, 7 ft 8 inches. These measurements come to diameters of 27.7 inches and 29.2 inches, respectively. Using a growth factor of 3 for pin oak (USDA), these trees are about 87 years old. The USDA rates the trees' wood as heavy, strong, and hard, and recommended as ornamentals. The acorns are eaten by urban critters. These stately trees appear very healthy from my perspective and are likely to last another 50 years where they are. Given their favorable strength characteristics they are unlikely to pose falling limb (or trunk) catastrophes. This is in contrast to the Norway Maple also slated for removal, which is a fragile, weedy tree of which there are many decrepit examples in the town's footprint. These trees are banned from planting in their European range. No loss, there.

However, we believe that the oaks, which are magnificent specimens and add much appreciated esthetic value to the town, should NOT be removed. There are so, so many trees that are dying (or dead) that pose real health hazards on our sidewalks, but they still stand.

Currently there are wires abrading one tree, at the first crotch, which could be accommodated by simply positioning the wires better, done from adjustments such as arm extensions, at the flanking telephone poles. I doubt that this is either a novel or difficult matter for an experienced utility company. Similarly, at the other tree the adjacent wire clusters could likewise be positioned out of immediate danger. These trees are strong, their trunks very unlikely to move much in even the strongest gales. It would be truly a sad day if these oaks were removed to make life easier for the utility, rather than having them employ the small adjustments that would allow the trees to live and be appreciated by our fellow townsfolk.

Sincerely,

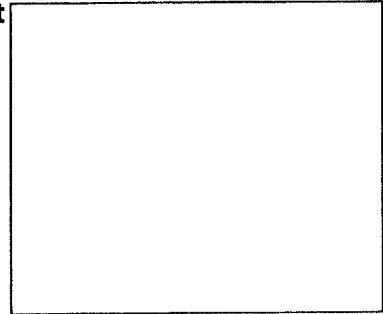
James Anderson and Janet Cromer

Handwritten signatures of James Anderson and Janet Cromer in cursive script.

**Town of Fairhaven  
Tree Hearing  
27 Union Street & 33 Union Street  
December 16, 2024**

**Present**

Joshua Crabb, Highway  
Vincent Furtado, BPW Superintendent  
Rebecca Vento, Office Manager  
Jim Anderson, 99 Green Street  
Howe Allen, 50 Center Street  
Michael Botelho, 33 Union Street  
Alan Goldman, 35 Union Street  
Lisa Goldman, 35 Union Street  
Bruce Webb



**I. Call to Order**

Mr. Wotton called the meeting to order at 5:02 p.m.

**II. Appointments**

Mr. Crabb – Tonight we are here for the tree hearing for the 3 trees on Union Street. There are two oak trees in front of 33 Union Street which are both approximately 26" in diameter. These two trees were advocated for by Eversource Utility and the third tree is a maple tree in front of 27 Union Street which is 22" in diameter which was a citizen's petition for removal.

We will give anyone that wishes to speak two minutes each and we ask that people talk one at a time.

As I previously mentioned, the tree in front of 27 Union Street was a resident request and the two trees in front of 33 Union Street was triggered by Eversource Utility and that was part of a CPC Project for the Millicent Library Improvements that were approved and funded last fiscal year and is actively going on.

In August 2024, I held a site meeting with the Tree Warden and a representative from Eversource. We identified that the overhead wires along the northern side of Union Street is a single phase power line. For these improvements at the Library there is a request for a power upgrade to increase it to a three phase power system. While we were onsite we noticed that the trees were very healthy. We asked what could be done to save them and what kind of alternatives had been looked at. The first thing that we thought of was could the wires be bundled together instead of having it span over space? They are not allowed to do this based on overhead utility regulations. Offsetting the wires was also considered - so instead of the wires being on center between the poles, if you were to push them to either the North or the South of where that utility pole line is. If you were to offset those to the northern side of Union street, you would create an aerial infringement, and that would be a required right of way process that we would have to go through. which would just further delay the project and I don't know if the project would survive at that point. If you were to offset them Southerly, it creates a same similar issue. There is no right of way opposition there but we get into strain on the utility poles because when you offset these wires you create a stress load on the utility pole which may cause the pole to sag or it could cause it to break in extreme weather. Lastly, I did have a very informal conversation with Eversource about putting these wires in this upgrade underground, providing an underground facility, and not having any overhead wires from start to finish. It is feasible to do but we are looking at approximately \$2,000 to \$5,000 per linear foot of underground wire and this project runs approximately 400 feet so you are talking a couple of thousand dollars for a short run. We were asked to have this hearing to remove the healthy trees. As for the tree in front of 27 Union Street that tree does not appear to be that healthy and our assessment was that it should probably come down while we are in the



**Town of Fairhaven  
Tree Hearing  
27 Union Street & 33 Union Street  
December 16, 2024**

area. I did receive two letters of opposition, one from the resident at 99 Green Street (Attachment A) and the other from the resident at 7 Walnut Street (Attachment B). Since we have these letters there will be no ruling tonight, this hearing would have to go before the Select Board at a later date. I will now open it up for discussion if anyone has anything they would like to add.

Mr. Anderson - Will the testimony tonight be available to the Select Board? Since I wrote the letter and then we had a discussion about it, I realized that I had made some assumptions about the nature of the problem based on what was posted on the tree and now my viewpoint has changed. I am still in opposition but for a different reason.

Mr. Crabb – Yes, we will have minutes and the two letters will be attached.

Mr. Anderson – Can I do an amendment to my original letter?

Mr. Crabb – You can either withdraw the letter or amend it.

Mr. Allen - Was the deadline for the letters today or can more letters be submitted?

Mr. Furtado - We will accept more letters since we are not making a ruling tonight.

Mr. Crabb - Since this is going to the Select Board we can accept more letters. If we did not receive the other two letters you would not have been able to submit.

Mr. Botelho - I live in front of the two healthy oak trees. They provide wonderful shade in the summer and contribute to the overall feel of the downtown area. I unfortunately missed the little postcard that went out and this caught me by surprise. The surprise was when the Eversource trucks were digging everything up, I went outside and talked to a few of the technicians. One of them were surprised that the Town was even allowing this to happen in a downtown historic area. I am in complete opposition to the removal of the trees in front of my property or any infringements that would be on my property if those lines go on the north side in my airspace on my property line and I'm open to looking at that option. I definitely want to delay the trees coming down and that's an option that we can explore with Eversource. I have not submitted a letter yet, but I understand the testimony at this open public meeting will be submitted. The steel pole that will act as the counterweight to the tension line is ridiculous that the Select Board allowed that in the historic center - trees were shocking but the steel pole was doubly shocking because that looks like an industrial type. I am willing to work with Eversource and the Town to see if there is a different way to do this even if it comes to aerial infringement because that would either be on my property or close to it on the north side and I do not see a problem with that.

Mr. Allen – Would it be possible for the next meeting that will occur in front of the Select Board for there to be an Eversource Representative available to answer some questions that I have? There was a comment made that we do not want to have too many telephone poles around, but is that better than getting rid of trees? I am not here in a professional capacity. I am a realtor and I just want to mention that taking down these trees will negatively affect Mr. Botelho's property value and will probably affect those that are around that area as well. Not to mention it does create shade. I think that if the resident at 27 Union Street feels that it is necessary to take down that tree and there is one in front of the post office which is rather sickly looking, are those that should probably be sacrificed rather than the ones in front of 32 Union that appear to be two of the healthiest trees in the center.

Ms. Goldman – I am also curious why it cannot be redirected behind the post office or why it has to come from that direction with that pole there and it's going to the post office.

Mr. Crabb – I believe that is something that Eversource engineering would be able to answer.

**Town of Fairhaven  
Tree Hearing  
27 Union Street & 33 Union Street  
December 16, 2024**

Mr. Botelho – If you look at the plan it looks like they just followed the existing route because the service enters the back of the library and they've trenched to get the new wires in off the pole. They could have easily gone the other route seen they put in new poles. The upgrade for the library three phase is out of the Community Preservation Funds?

Mr. Crabb – Yes, I am not sure if the original application was covering the upgrade.

Ms. Goldman – It was not in the initial hearing about putting up the pole and there was nothing discussed about taking down trees.

Mr. Crabb – No, I think Eversource petitioned the Select Board whenever they want to do a utility pole placement or replacement so that went before the Select Board. We can request that Eversource be present at a meeting, this may delay us a tiny bit but I think it is worth it.

Mr. Allen – We are all lay people when it comes to electricity delivery. I think it would be important for them to explain their rationale why this particular path was chosen instead of an alternative one and it may very well come down to economics. I am still unclear on who is paying for the pole and wire. I think the CPC has to do with the infrastructure improvements and aesthetic of the library but not the delivery of power.

Mr. Crabb - I would agree with that but we were not part of the application.

Ms. Goldman – I would think that the Select Board would want to know from Eversource why that has to be that pathway.

Mr. Goldman – What is the power for at the library?

Mr. Crabb - For the HVAC system.

Mr. Allen – I would agree that is important thing because books get moldy. From what I understand it has to do with preserving the building. I wholeheartedly support that. I just do not understand why this route was chosen.

Mr. Botelho – I do not think that anyone is articulating any disagreement with using the CPC funds for the library. We all love the library.

Mr. Allen – Moving forward I just want to get a clear picture as to what we should be expecting and what we should be looking out for. The Select Board has to meet because these letters of opposition and someone is going to coordinate with Eversource's representative who is going to be able to speak to this. How will it be listed on the Select Board's agenda?

Mr. Crabb - It would be listed as a public hearing appointment on the Select Board Agenda.

Mr. Crabb motioned to adjourn the meeting at 5:40 p.m.

Respectfully submitted,

*Rebecca L. Vento*

Rebecca Vento  
Office Manager





Rebecca Vento <rvento@fairhaven-ma.gov>

---

## OPPOSITION to tree removal

1 message

---

Meg Frank <hrhmegfrank@gmail.com>  
To: "rvento@fairhaven-ma.gov" <rvento@fairhaven-ma.gov>

Wed, Dec 18, 2024 at 10:43 AM

Good Morning Becky,

I am emailing you today regarding the Board of Public Works meeting scheduled for this evening, 12/18/24 at 5pm on Arsene Street. The purpose of the meeting is to discuss removal of 3 trees on Union Street.

I am unable to attend the meeting this evening r/t a scheduling conflict, however I would like my opinion considered as I live on 7 Walnut St. As per our telephone conversation today as to having my opinion heard, see the paragraph below.

I would like it on record that I am in OPPOSITION to cutting the 3 trees down on Union Street, that the meeting will be addressing. I understand that there has been opposition to removal of 2 trees already and that there is one remaining tree being considered. I would like to convey my OPPOSITION to the entire 3 trees on Union Street being cut down. They are healthy and provide shade and add to the quaint and lovely charm of our beautiful center of town.

Please contact me with any questions or concerns. Many thanks for hearing my opinion and putting it on record.

Respectfully and with best regards,

Dr. MarySarah Frank ( Meg )  
7 Walnut St.  
Fairhaven, MA 02719  
**508-556-1660**

## PROPOSAL FOR RECRUITMENT SERVICES FAIRHAVEN TOWN ADMINISTRATOR

### **How the Collins Center Will Assist the Town Recruit a Town Administrator**

The Collins Center works with public organizations to understand the most critical issues they are facing, as well as the culture and the leadership styles that would be best suited to move them forward. Only after gaining an understanding of the client's critical needs does the Center proceed to recruit quality candidates for the position.

In implementing this approach, the Center will:

- Carefully consider the challenges a Town Administrator will face currently and in the next three to seven years;
- Review the recently-used Profile of the organization and the position with particular attention to identifying the Town's priority issues. The Profile will specify the professional and personal qualities needed to succeed in the position;
- Build a competitive pool of candidates utilizing the Center's extensive network and data base as well as traditional advertising; and
- Support the Town's evaluation of candidates. The recruitment team will help plan the interview process and assist the Town with the final interview process. The Center will facilitate and assist with but will not negotiate contract provisions.

### **Project Approach**

The following information is provided to illustrate the Center's approach to executive recruitment and what it believes are successful outcomes of each stage of a search. The Center believes that a significant risk in selection is choosing the best person from a mediocre pool of candidates. The Center's principal effort is directed at giving its clients a pool of well-qualified candidates, thereby reducing this risk.

### **Task One: Updating/Reviewing the Town's Profile**

The recruitment team begins the search with a simple question: What criteria would the organization use to determine that the appointment was successful? The recruitment team will work with key stakeholders to develop and finalize a Profile to be approved by the Town.

**Outcome:** A Profile Statement will be prepared for the Town's approval. Once approved, the recruitment will commence using the Profile as a marketing tool for the position.

### **Task Two: Networking, Screening, and Presentation of Paper Candidates**

Standard advertising will be prepared and placed in various venues. At the same time, the recruitment team also engages in *extensive network recruitment* activities using various outreach methods and extensive personal contacts. Often the best person for a job is not looking for a job; so, networking is a critical part of the process. To attract candidates, the unique challenges of the employment opportunity will be stressed. Work is conducted to find candidates that have faced challenges that are of similar magnitude and importance to those faced by the Town. At the conclusion of networking, the applications from a pool of prospective candidates who best meet the Profile will be presented to the interview committee. The Center will work with the interview committee to evaluate applications, come to consensus on which candidates to interview.



**Outcome: Candidates to be invited for a preliminary interview will be identified.**

### **Task Three: Preliminary Interviews**

After candidates are selected for a preliminary interview, the recruitment team will design an interview process with the interview committee. The Center will assist in the development of standard interview questions and will schedule and facilitate the interviews. At the conclusion of the interviews, Center staff will facilitate the interview committee's discussion to identify potential finalists.

**Outcome: Interview Committee will identification of tentative finalists.**

### **Task Four: Reference and Background Checking**

Reference checks of tentative finalists are extremely thorough. The recruitment team will speak with employers, professional peers, and subordinates, systematically posing the same questions to references for each potential finalist. The Center will arrange for credit, criminal history, and verification of educational credentials for the potential finalists.

**Outcome: Presentation of qualified well vetted candidates to the Town.**

### **Task Five: Guidance on Final Interview and Selection**

The recruitment team will help the Town plan its final interview process by providing written and oral guidance. The recruitment team will help structure the discussion, suggest questions, and suggest the structure of the interviews.

The Center is able to assist the Town with logistics, expectations and discussions, but the actual negotiations of a contract is the responsibility of the Town.

**Outcome: A well-organized Final Interview and Selection Process**

### **Professional Fees, Expenses, and Payment Schedule**

The all-inclusive professional fee for the engagement is \$8,500. The payment schedule is as follows:

- \$5,000 when Task 1 is complete; (profile)
- \$3,500 when Task 5 is complete. (interviews schedule with Board)

## **Qualifications of Project Staff**

**Mary Flanders Aicardi, MPA** Mary Aicardi leads the human resources practice. She brings more than twenty-five years of experience in public sector human resources administration and labor relations to the Collins Center. She served for more than eight years as the Personnel Director for the town of Watertown, Massachusetts, where she negotiated numerous collective bargaining agreements on behalf of Town management. Additionally, Aicardi has worked as the Interim Human Resources Director for the Town of Braintree, the Assistant Human Resources Director for the Town of Barnstable and as a volunteer recruiter for a non-profit agency.

Aicardi has conducted close to 60 recruitments for the Collins Center and dozens more for other entities. She has conducted human resources audits and has reviewed, and modernized classification and compensation plans for more than 60 municipalities. She has drafted numerous human resource policies and personnel plans. Aicardi has conducted training programs on a wide range of human resources topics, including leadership training, performance appraisal, progressive discipline, and sexual harassment prevention. Aicardi holds an MPA and a Bachelor's Degree in Political Science from the University of Massachusetts at Amherst. She is certified by the Massachusetts Commission Against Discrimination as a trainer of discrimination and sexual harassment prevention. Mary is a member of the Joint Labor Management Committee and is an elected Town Meeting Member in her hometown of Shrewsbury, MA. Mary has received a Certificate in Diversity and Inclusion from Cornell University.

**Elizabeth Corbo, Esq., Associate.** Attorney Elizabeth "Libby" Corbo practices in the areas of human resources, labor, and employment. Previously she practiced public sector labor, employment and school law at a prominent public sector law firm. In that role, Corbo advised municipalities on HR practice, conducted trainings, drafted policies and represented public employers in all aspects of employment issues, including employment litigation, negotiations and grievances. Corbo also represented school districts in employment issues and student services, including 504 and IEP plans, and student services. In addition to advising municipalities, Corbo also worked as an attorney with the Massachusetts Commission Against Discrimination. Corbo currently serves as a member of the local School Committee and is Chairman of the School Building Committee. Corbo holds a Juris Doctor from Boston University Law School and a dual bachelor's degree in Psychology and Criminal Justice from Elmira College.



## List of Recruitments Performed

POSITION	MUNICIPALITY
Town Manager	Town of Barnstable
Town Manager	Town of Bridgewater
Town Manager	Town of Chatham
Town Manager	Town of Cohasset
Town Manager	Town of Dracut (2)
Town Manager	Town of East Longmeadow
Town Manager	Town of Foxborough
Town Manager	Town of Framingham
Town Manager	Town of Great Barrington
Town Manager	Town of Longmeadow
Town Manager	Town of Mansfield
Town Manager	Town of Mashpee
Town Manager	Town of Plymouth
Town Manager	Town of Randolph
Town Manager	Town of Reading
Town Manager	Town of Southbridge
Town Manager	Town of Winthrop
Town Administrator	Town of Belmont
Town Administrator	Town of Brewster
Town Administrator	Town of Burlington
Town Administrator	Town of Carver
Town Administrator	Town of Dover
Town Administrator	Town of Fairhaven
Town Administrator	Town of Gosnold
Town Administrator	Town of Holliston
Town Administrator	Town of Marblehead
Town Administrator	Town of Medway

Town Administrator	Town of Millbury
Town Administrator	Town of Millis
Town Administrator	Town of North Reading
Town Administrator	Town of Northfield
Town Administrator	Town of Norwell
Town Administrator	Town of Princeton (2)
Town Administrator	Town of Rutland
Town Administrator	Town of Sharon
Town Administrator	Town of Sherborn
Town Administrator	Town of South Hadley
Town Administrator	Town of Southampton
Town Administrator	Town of Topsfield
Town Administrator	Town of Walpole
Town Administrator	Town of Wilbraham
Town Administrator	Town of Yarmouth
Administrative Coordinator	Town of Erving
County Administrator	Barnstable County
Chief Financial Officer	City of Lynn
Chief Financial Officer	City of Amesbury
Chief Financial Officer	City of New Bedford
Chief Financial Officer	City of Brockton
City Treasurer	City of Worcester
Director of Administration and Finance	Chelsea Public Schools
Director of Traffic, Parking and Transportation	City of Cambridge
Director of WRTA	Worcester Regional Transit Authority
Deputy Fire Chief	Town of Acton
Executive Director	Central Massachusetts Regional Planning Council
Executive Director	Essex Regional Retirement Board
Executive Director	Medford Housing Authority
Executive Director	Martha's Vineyard Commission



Fire Chief	Amesbury
Fire Chief	Ipswich
Human Resources Director	City of Brockton
Personnel Director	City of Lynn
Personnel Director	City of Revere
Police Chief (ongoing)	Town of Erving

## References

### **Town of Gosnold – Town Administrator**

Sarah Berry, Chair of Select Board  
508-320-2400  
[sbgberry@gmail.com](mailto:sbgberry@gmail.com)

### **Town of Randolph – Town Manager**

Jason Adams, Council President  
781-626-3629  
[Jason.adams001@gmail.com](mailto:Jason.adams001@gmail.com)

### **Town of Dover – Town Administrator**

Robyn Hunter, Chair of Selectboard  
617-930-2337  
[rhunger@doverma.org](mailto:rhunger@doverma.org)

### **Town of Millbury – Town Manager**

David Roach, Chair, Screening Committee (former Superintendent of Schools)  
[Droach40@gmail.com](mailto:Droach40@gmail.com)  
508-865-0520

### **Town of Cohasset – Town Administrator (and assist with Library Director)**

Paula Linhares, HR Coordinator – current  
781-383-4105  
[plinhares@cohassetma.org](mailto:plinhares@cohassetma.org)

### **Town of Norwell**

Ellen Allen, Chair (screening committee member)  
Norwell Board of Selectmen  
[ellenallennorwell@comcast.net](mailto:ellenallennorwell@comcast.net)

### **Town of Millis – Town Administrator**

Karen Bouret – Operations Manager  
508-276-2634  
[kbouret@millis.net](mailto:kbouret@millis.net)



# Fairhaven, MA – Town Administrator Profile



## FAIRHAVEN HISTORY

Fairhaven, MA (16,000 pop.), is a charming seaside community located on the shore of Massachusetts' Buzzards Bay, approximately one mile from New Bedford, 35 miles east of Providence, R.I., and 50 miles south of Boston. The Town is bordered by the Acushnet River and New Bedford to the west, Mattapoisett to the east, Buzzards Bay to the south, and Acushnet to the north. Fairhaven is a community of homes, commercial development, the marine trades, and industrial companies. The Town, settled in 1653, has a rich history dating back to the days of the Pilgrims. Fairhaven was incorporated in 1812 after separating from New Bedford and grew in prosperity during the whaling days in the 1800s. The Town's most remarkable features are the magnificent European-style public buildings built between 1885 and 1906 by Standard Oil Company executive and millionaire Henry Huttleston Rogers, a native of the Town.

<https://www.fairhaven-ma.gov>

## FAIRHAVEN GOVERNMENT

Fairhaven has a three member elected Select Board that hires the Town Administrator. The Town has a representative Town Meeting. The Select Board serves as the Town's chief executive, acting through the Town Administrator, who is responsible for the day-to-day operations of town government. Legislation is pending to change from a three member to a five member Select Board.

Fairhaven has a number of elected positions, boards, and committees including the Select Board, School Committee, Board of Public Works, Planning Board, Board of Health, Housing Authority, Commissioner of Trust Funds, Town Clerk, Tree Warden, and Town Moderator. Fairhaven has a central fire station and police department, one library, and its own school department with two elementary schools, a middle school, and a high school. The Town has an agreement with the Town of Acushnet in which Acushnet high school students can choose to attend Fairhaven High School. Approximately one third of the students at Fairhaven High School are from Acushnet, which is a source of approximately \$2.5 million dollars in annual revenue.

## ECONOMIC AND COMMUNITY DEVELOPMENT

Fairhaven is a seaside community with a working waterfront. While retail trade is now the leading segment of the economy, fishing and ship maintenance are still important segments. Acushnet Company, a producer of the Titleist and FootJoy brands of golf equipment, is headquartered in Fairhaven, and there is a burgeoning healthcare-driven job cluster along Route 240. The Town's economic development goals include preserving the financial viability of the working waterfront, maintaining healthy commercial occupancies along Route 6 and other commercial areas, supporting mixed-use projects, encouraging small business incubation and growth, and collaboration with New Bedford and other area towns on workforce training and regional economic development.

The Northeast Maritime Institute, located in the Town Center, is a private college that offers training and education for careers in the maritime industry. Maritime-related business in Fairhaven represents a small but vital industry cluster and it is an important aspect of the Town's legacy and identity. As the Town is largely built-out, future development will need to consist of redevelopment. Nearly 90% of businesses in Town can be considered "small business." Apart from the commercial and industrial areas and three working farms, Fairhaven is a quiet residential community.



# Town of Fairhaven



## FINANCIAL FACTS

### FY22 Budget:

Town	\$29,925,787
School	\$24,428,591
Capital	\$2,143,900

### Bond Rating:

Standard and Poor's (July 2020)	AA+
Moody's	AA+

FY21 Residential Tax Rate: \$11.29

FY21 Commercial Tax Rate: \$22.53

### 2021 Tax Classification:

Residential	\$22,949,125	75.33%
Commercial	\$5,699,748	13.71%
Industrial	\$671,240	2.2%
Personal Prop.	\$1,145,460	3.76%

### Revenue by Source:

Tax Levy	\$31,490,171	57.9%
State Aid	\$11,500,000	21.3%
Local Receipts	\$8,333,000	15.3%
Other	\$2,981,207	5.5%

### Reserves:

Free Cash	\$1,695,631
Overlay	\$8,836,722

## FAIRHAVEN FINANCES

According to Moody's Fairhaven has a robust financial position, and a strong socioeconomic profile with a sizable tax base. It has a moderate pension liability with an affordable debt burden. The Town is typically conservative with its spending, but strongly supports investing in the upkeep of its historic buildings. Like most municipalities, Fairhaven is facing potential revenue constraints due to the ongoing COVID-19 crisis as well as the overall pressure of increasing costs and infrastructure needs. The Town has made a very successful concerted effort in recent years to seek and apply for grants.

## OPEN SPACE AND RECREATION

Fairhaven strives to preserve and protect its agricultural resources and landscapes, cultural and historic places, open space, recreational, and forest and marine resources. The Town has a total area of 14.1 square miles and 29.4 miles of shore property as well as significant rural areas, including three working farms. Fairhaven is home to a town beach, a public state beach overlooking Buzzards Bay, two large public parks, many recreational fields and facilities, several recreational marinas, commercial wharves, a yacht club, historical Fort Phoenix and the Rogers buildings, and provides free walking tours of scenic and historic sites. The Fairhaven Recreation Department oversees a variety of youth sports programs, a fitness room, a summer youth program, and school vacation programs as well as adult exercise, wellness, and day trip programs each year.

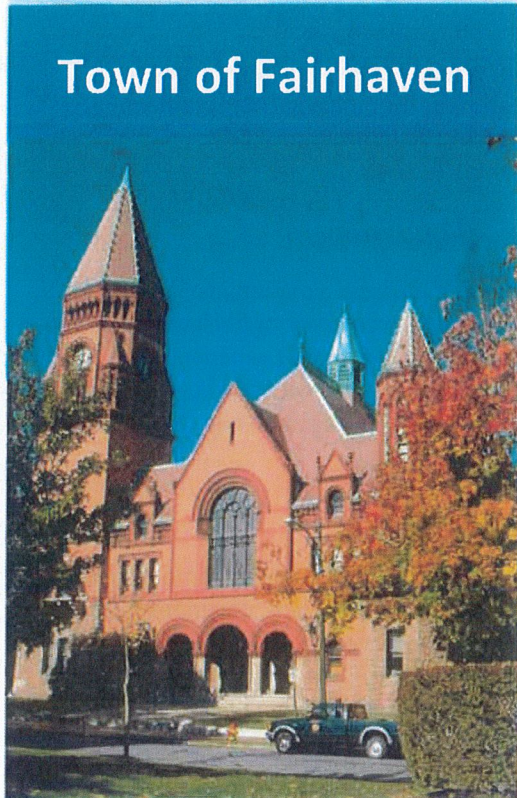
## CHALLENGES AND OPPORTUNITIES

Fairhaven's current challenges include the implementation of necessary wastewater treatment plant upgrades which will be funded via the Sewer Enterprise Fund, implementing the recommendations of the Public Facilities Improvement Plan of which the first priority is a Public Safety Facility, enhancing collaboration and unifying Town staff as well as a desire for economic development that will allow the community to retain its rural charm and character.

The Town has benefited from federal stimulus funding programs and has the potential to benefit from additional grant funding in the near future. A critical facet of the Town Administrator position will be to work with department heads and grant consultants and to network with State and Federal officials to maximize the grant funding the town receives. The Town Administrator will also need to oversee management of these funds to ensure that they are spent in the most efficient manner and in the best interest of the taxpayer.



## Town of Fairhaven



### Current Projects

- Approximately \$40+ million for wastewater treatment plant upgrades to be funded through the Sewer Enterprise Fund via sewer user fees. This project is scheduled to begin in 2026.
- A \$1.4 million high school turf field project to be funded with surplus revenue and \$200,000 from the high school's trust fund.
- Ongoing maintenance of infrastructure.

### Potential Projects

- Implementation of the \$110 million Public Facilities Improvement Plan of which the first priority is a new public safety facility, expected cost of about \$50 million, which would require a Proposition 2 ½ override.
- Work with the committee to help determine best use of the former Rogers School building.

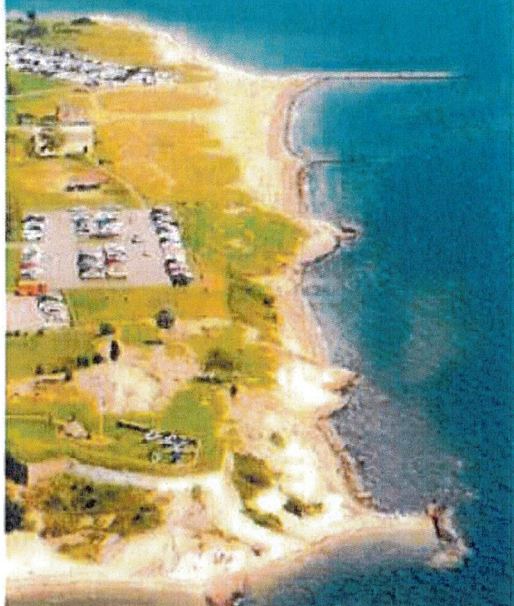
### THE IDEAL CANDIDATE

To serve as the second permanent Town Administrator since this form of local government was enacted in 2014, Fairhaven is seeking a seasoned, collaborative leader with strong financial acumen, who has the ability to unify and make difficult decisions, has strategic vision, excellent communication skills, and experience with economic development and personnel management. The ideal candidate will be:

- A demonstrated and dynamic leader who is forward-thinking, fair-minded and transparent;
- An effective and experienced manager from an environment of similar complexity who has proven strong organizational and professional skills;
- A manager with exceptional financial acumen with a proven record of building balanced budgets that reflect needs while adhering to the Town's financial policies and respecting its limited resources;
- An experienced in negotiator of contracts and having served as a Procurement Officer;
- An individual who has, human resources, labor and employee relations, and collective bargaining experience;
- Experienced in planning, community development and economic development;
- Knowledgeable of municipal management best practices and ability to implement them;
- Experienced in guiding the development of a shared strategic vision for the community and whose words and actions provide clarity to those they supervise as well as all boards and commissions and the public;
- A leader who can work with state and federal officials closely to further the Town's goals and priorities;
- An individual who understands the value of protecting open space and historic structures;



## Town of Fairhaven



### QUESTIONS AND REFERRALS

Should you have any questions regarding this opportunity, or a recommendation of a colleague that may be interested, please contact **Mary Flanders Aicardi, Human Resources Practice Leader** at 508-215-8992.

To learn more about the Collins Center for Public Management and the services provided, please visit [www.umb.edu/cpm](http://www.umb.edu/cpm)

- Someone who understands coastal resiliency issues and the importance of the blue economy; and
- A person with unquestionable ethics and integrity and committed to the standards for municipal management professionals specified by the International City Management Association (ICMA)

### QUALIFICATIONS AND EXPERIENCE

The Town seeks applicants who possess a minimum of a Bachelor's degree in public administration, government or a related field and five to seven years of municipal management experience. A Master's degree is preferred. Candidates with an equivalent combination of education, training, certification and related experience are encouraged to apply.

### SALARY AND BENEFITS

The successful candidate will receive an attractive compensation package including health and retirement plans, commensurate with qualifications and experience. Fairhaven values diversity and is an Equal Opportunity Employer and encourages applications from candidates from diverse backgrounds and from underrepresented groups. The anticipated salary is \$155K +/- depending on qualifications.

### APPLICATION AND SELECTION PROCESS

Please submit your cover letter and resume detailing your interest and qualifications to the Collins Center recruitment email [recruitment.umb@gmail.com](mailto:recruitment.umb@gmail.com).

Please combine all documents into a single PDF file and include your **LAST NAME and FAIRHAVEN** in the subject line. Review of resumes begins September 23, 2021.

A screening committee will review resumes to determine which candidates will be invited for a preliminary interview, which will be held in executive session and may be held via Zoom. The screening committee will determine which candidates to move to the next phase, which will be references and background checks. Finalists will be interviewed in public session by the Select Board.